

Sensor speed controller
SRS-1



■ **Applications**

Applied in ventilation systems for turning the fans on/off and speed control of single phase voltage controlled fan motors. Several fans can be connected to one speed controller if their total current does not exceed the maximum controller current.

■ **Design**

The casing is made of plastic and the sensor panel is made of hardened glass. The sensor panel has

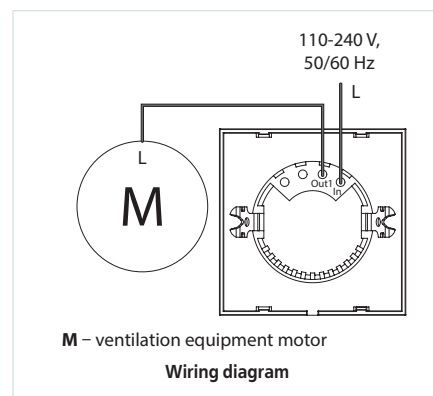
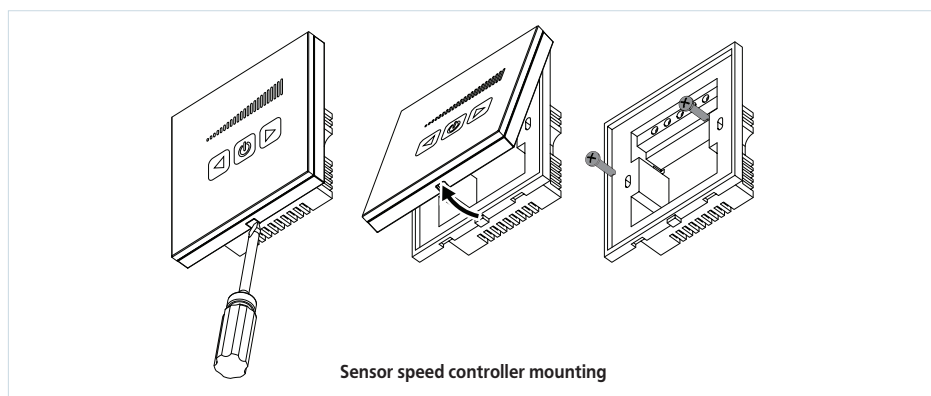
On/Off button for speed control from minimum to maximum. The set speed level is displayed on the LED display. The speed controller has high control accuracy.

■ **Mounting**

The controller is designed for indoor mounting into standard round electric junction boxes.

Technical data:

	SRS-1
Voltage [V / 50/60 Hz]	230
Maximum load current [A]	1
Cable cross section	0.35 up to 1 mm ²
Temperature range [°C]	from -10 up to +45
Humidity range	5% up to 80% (no condensation)
Service life	100 000 switching operations
Protection rating	IP 30
Weight [kg]	0.138



Overall dimensions:

