

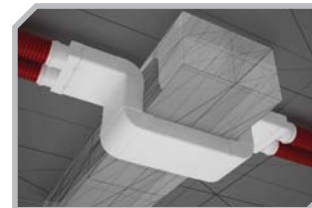
FlexiVent



SEMI-RIGID AIR DUCTS

VENTS reserves the rights to modify any of its products' features, designs, components and specifications at any time and without notice to maintain the development and quality of manufactured goods.

10/2016



Contents

What are semi-rigid air ducts?	2
Advantages and key features	4
Typical configurations	6
Installation	
General view of the system	14
Air distribution boxes	16
Connectors	18
Air throttling dampers	19
Plastivent	20
Ducts	21
Technical specification	24



What are semi-rigid air ducts?

FlexiVent

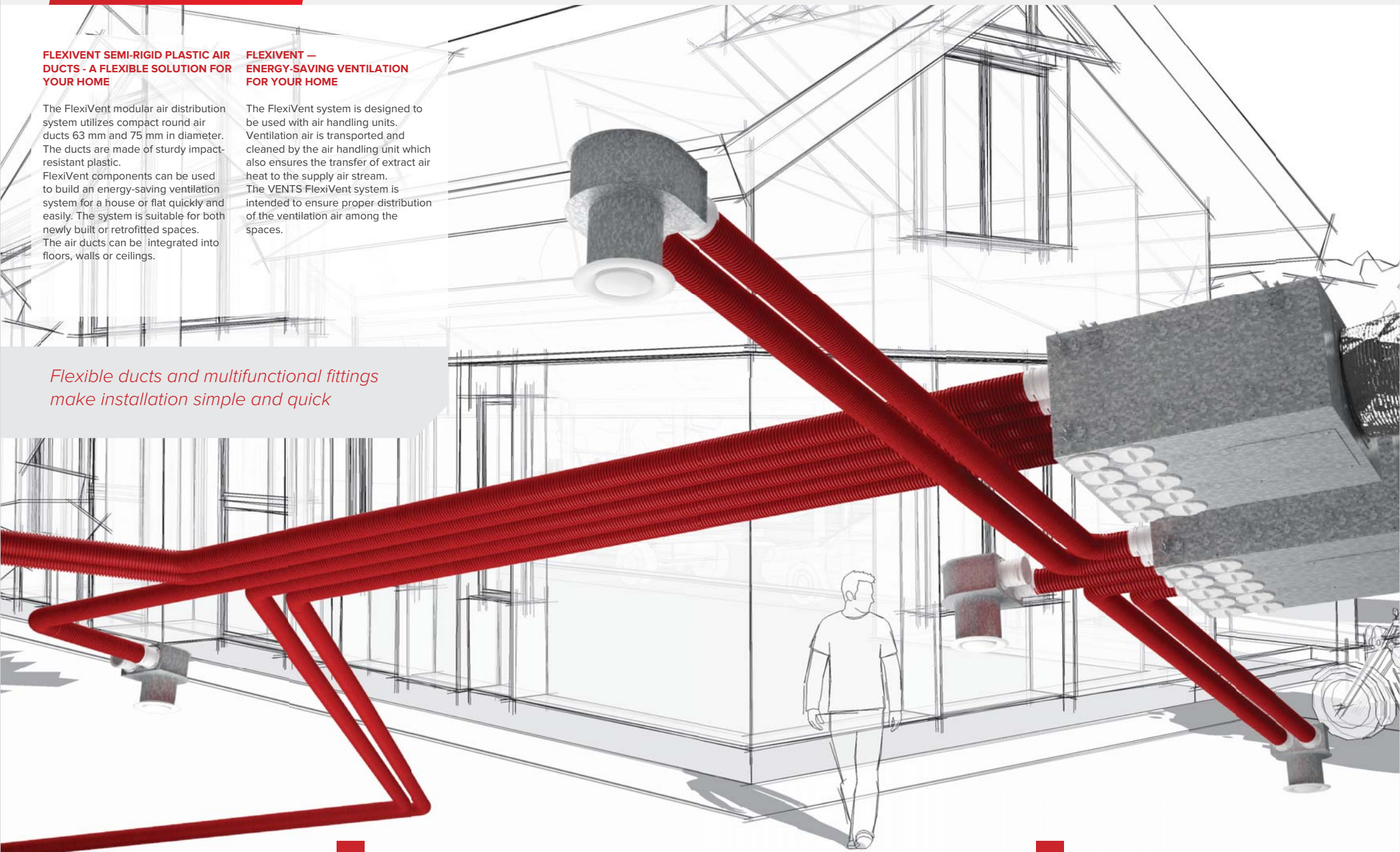
FLEXIVENT SEMI-RIGID PLASTIC AIR DUCTS - A FLEXIBLE SOLUTION FOR YOUR HOME

The FlexiVent modular air distribution system utilizes compact round air ducts 63 mm and 75 mm in diameter. The ducts are made of sturdy impact-resistant plastic. FlexiVent components can be used to build an energy-saving ventilation system for a house or flat quickly and easily. The system is suitable for both newly built or retrofitted spaces. The air ducts can be integrated into floors, walls or ceilings.

FLEXIVENT – ENERGY-SAVING VENTILATION FOR YOUR HOME

The FlexiVent system is designed to be used with air handling units. Ventilation air is transported and cleaned by the air handling unit which also ensures the transfer of extract air heat to the supply air stream. The VENTS FlexiVent system is intended to ensure proper distribution of the ventilation air among the spaces.

Flexible ducts and multifunctional fittings make installation simple and quick



FLEXIVENT KEY ADVANTAGES:



▶ Compact footprint: the system can be adapted to custom ceiling configurations with intricate design and integrated with heated floors.



▶ Low noise levels.



▶ The material and shape of the semi-rigid ducts help them sustain high external loads such as the pressure produced by cement screed.



▶ Compatible with the Plastivent air duct system.



▶ Improved interior aesthetics: the ventilation lines are hidden under floors while the floor grilles, the only visible elements, provide air supply and extraction.

Unlike a conventional air ducting system only suitable for under-the-ceiling mounting the FlexiVent system offers much broader functionality. Air ducts can be hidden under suspended ceilings or embedded into walls and floors. In addition to the ease of installation the system offers significant cost savings

Each ventilation system must be designed and configured with components based on the applicable local constructions norms and regulations*.

		Air Flow Rate [m³/h]	Air changes per hour
Entire flat	—	—	0,4 – 1
Per person	—	30	—
Bathrooms and toilets	—	—	—
—	Permanent ventilation	60	—
—	Periodic ventilation > 12 hours	45	—
Toilet	—	—	—
—	Permanent ventilation	30	—
—	Periodic ventilation > 12 hours	25	—
Kitchen	—	—	—
—	Permanent ventilation	60	—
—	Periodic ventilation > 12 hours	45	—

*Recommendations on air exchange in residential buildings as per DIN 1964.6 and DIN 18017.3

FLEXIVENT – MORE COMFORT AT A LOWER COST:



▶ No air leakages.



▶ Quick and simple assembly thanks to the flexible ducts and multifunctional fittings - no special tools and qualification required.



▶ Smooth inner surface makes maintenance easy.



TYPICAL CONFIGURATION 1:

An air handling unit with a heat exchanger is mounted onto the basement wall. The air distribution boxes, ducts and connectors are embedded into the wooden floor structure. Supply air is delivered through the floor grilles in the bedroom and the living room. Extract air is removed through the ceiling disc valves in the kitchen, bathroom and basement. The kitchen exhaust hood is also connected to the air handling unit. The air moves between rooms through the door grilles.



FlexiVent air duct



Air distribution box



Floor connector with a grille



Ceiling connector with a disc valve



Air handling unit



Isovent 150 insulated duct



Ventilation hood

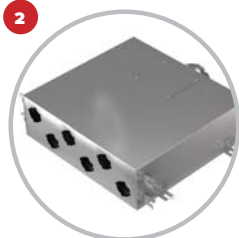


TYPICAL CONFIGURATION 2:

An air handling unit with a heat exchanger is mounted to the basement floor. The air distribution boxes, ducts and connectors are embedded into the cement screed. Supply air is delivered through the floor grilles in the bedroom and the living room. Extract air is removed through the ceiling disc valves in the kitchen and basement. The kitchen exhaust hood is also connected to the air handling unit. The air moves between rooms through the door grilles.



FlexiVent air duct



Air distribution box



Floor connector with a grille



Ceiling connector with a disc valve



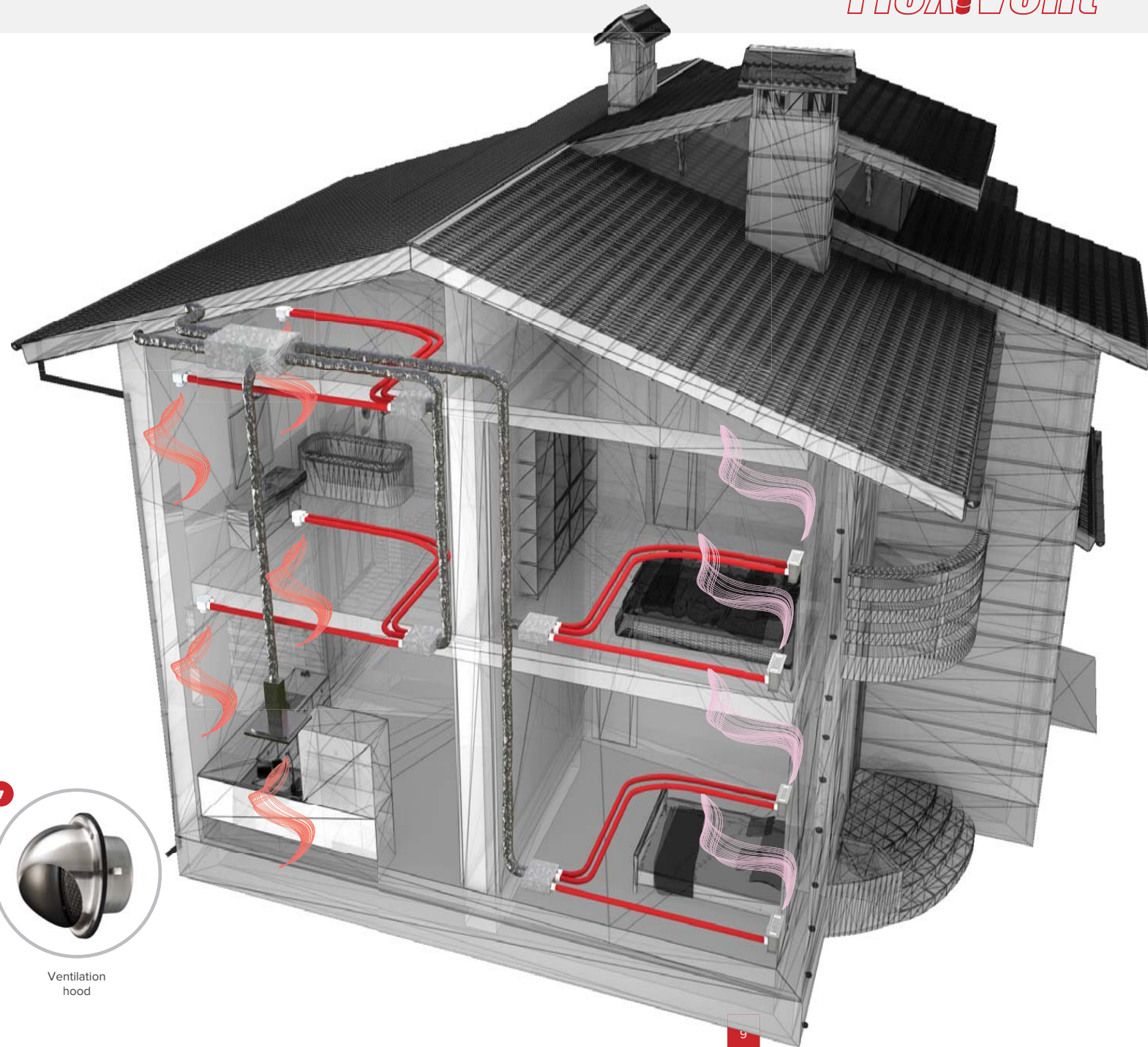
Air handling unit



Isovent 150 insulated duct



Ventilation hood





FlexiVent air duct



Air distribution box



Ceiling connector with a disc valve



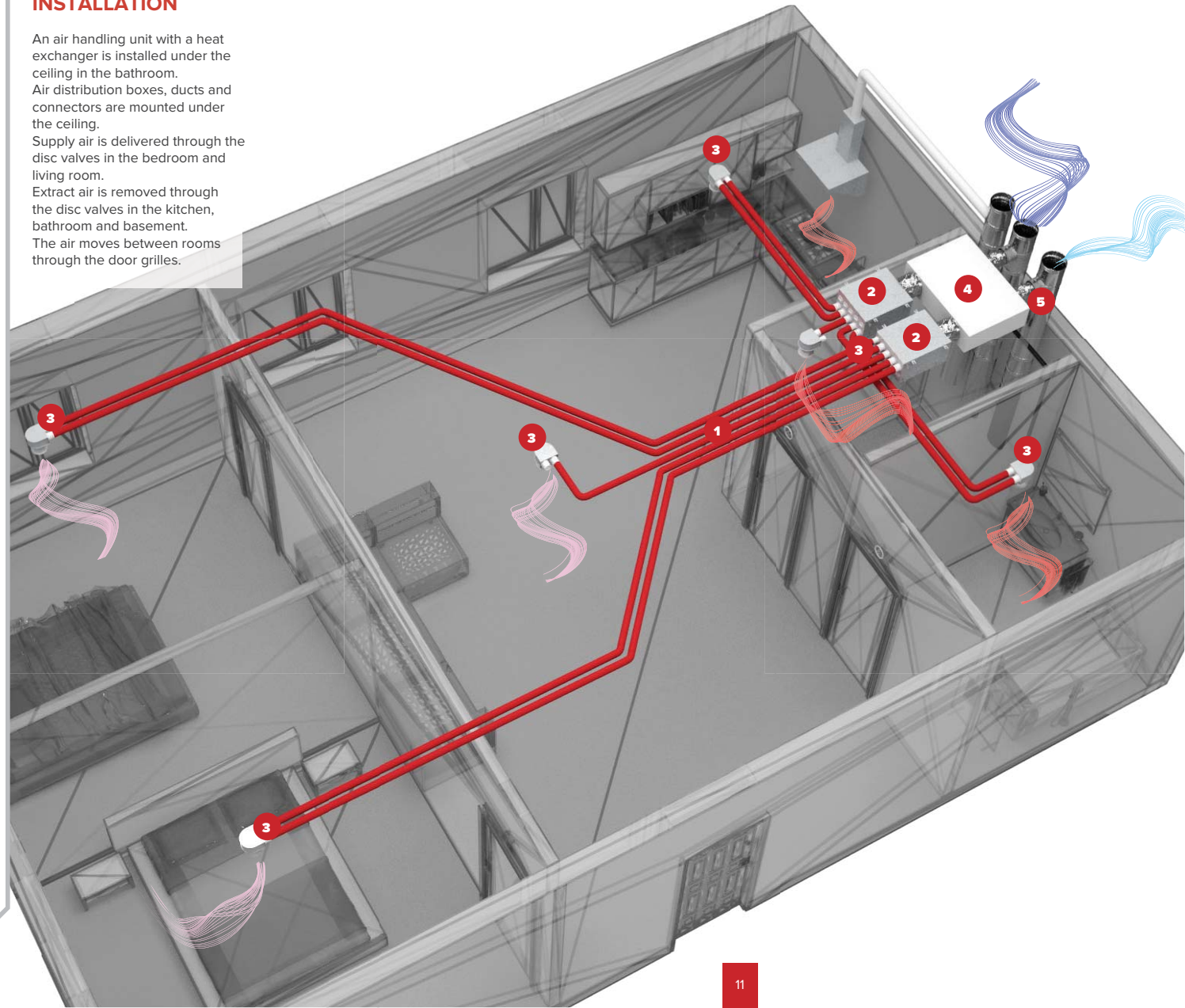
Air handling unit



Isovent 150 insulated duct

CEILING INSTALLATION

An air handling unit with a heat exchanger is installed under the ceiling in the bathroom. Air distribution boxes, ducts and connectors are mounted under the ceiling. Supply air is delivered through the disc valves in the bedroom and living room. Extract air is removed through the disc valves in the kitchen, bathroom and basement. The air moves between rooms through the door grilles.



FlexiVent air ducts combine the elasticity of flexible ducts with the structural sturdiness of rigid ducts



FlexiVent air duct



Air distribution box



Ceiling connector with a disc valve



Floor connector with a grille



Air handling unit



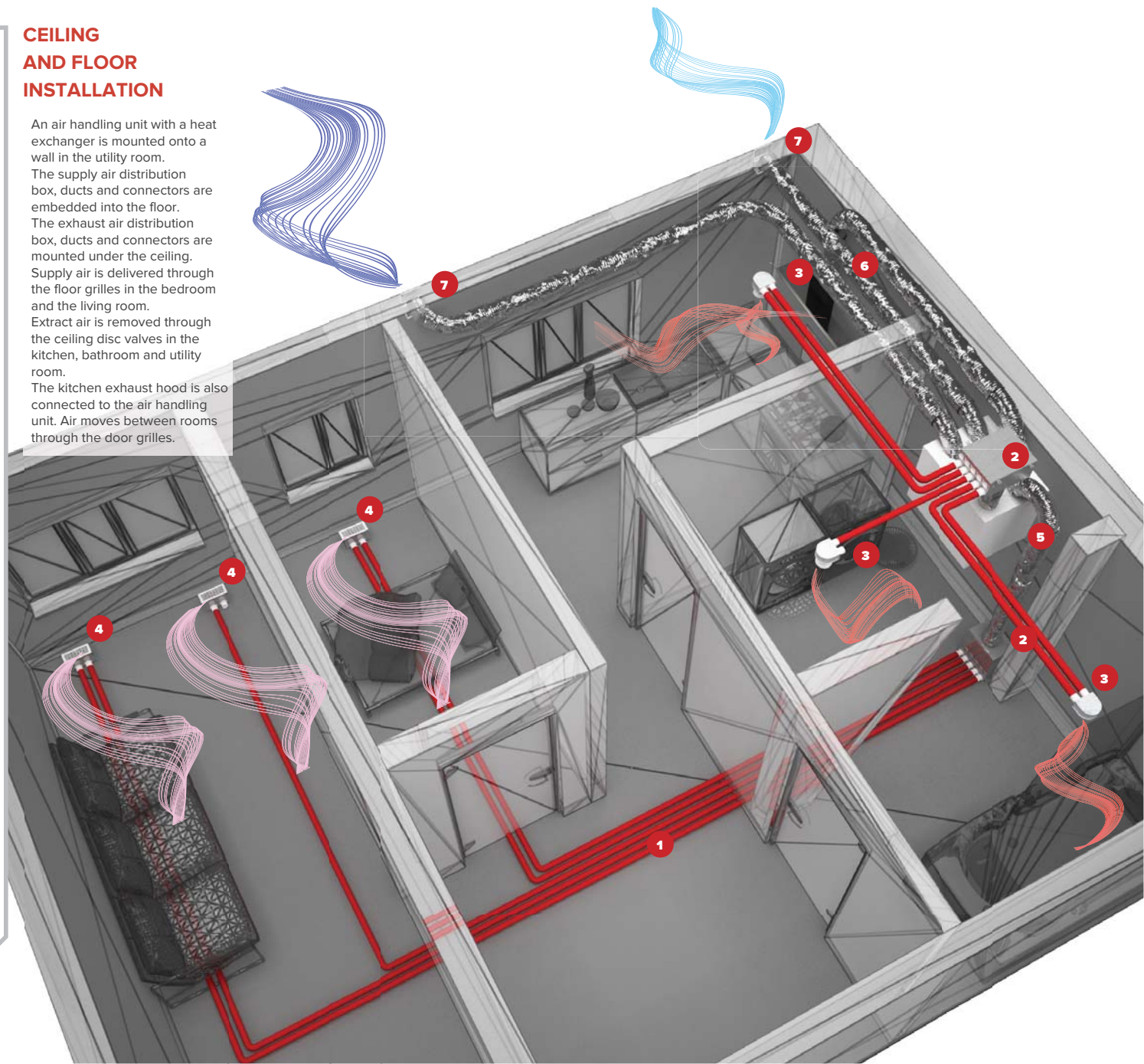
Isovent 150 insulated duct

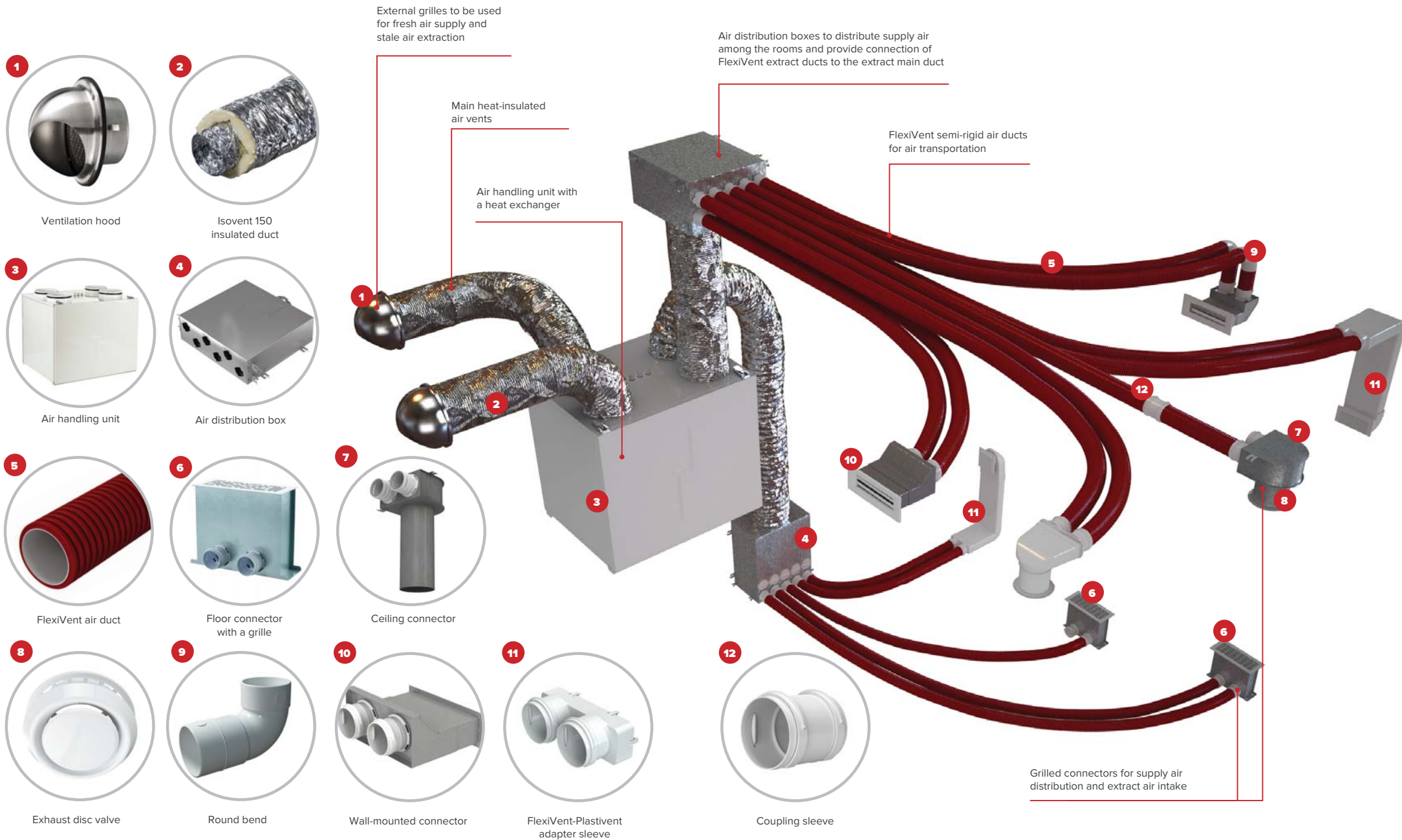


Ventilation hood

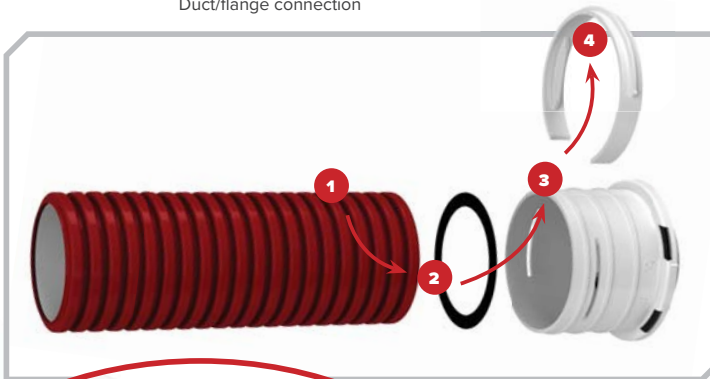
CEILING AND FLOOR INSTALLATION

An air handling unit with a heat exchanger is mounted onto a wall in the utility room. The supply air distribution box, ducts and connectors are embedded into the floor. The exhaust air distribution box, ducts and connectors are mounted under the ceiling. Supply air is delivered through the floor grilles in the bedroom and the living room. Extract air is removed through the ceiling disc valves in the kitchen, bathroom and utility room. The kitchen exhaust hood is also connected to the air handling unit. Air moves between rooms through the door grilles.





Duct/flange connection

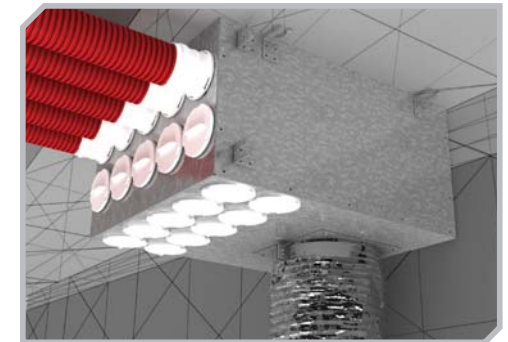
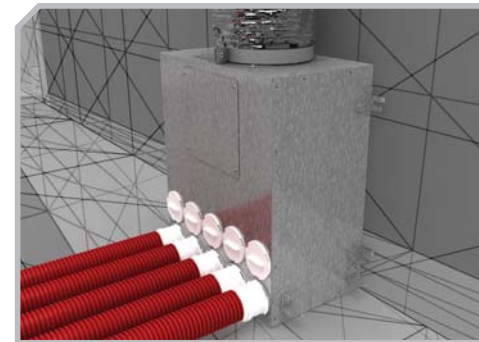


The duct is fitted with a slip-on seal to retain air-tightness class C (available as an accessory). The lock ring (supplied) secures the air duct in place.



The air distribution boxes have a 20 mm thick layer of internal sound insulation.

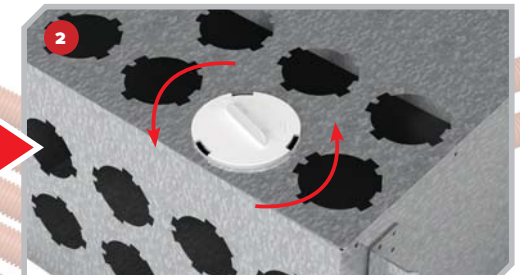
Depending on the number of rooms and the air handling unit capacity the air distribution box can be configured with a different number of semi-rigid air ducts. The air distribution ports to be used are fitted with plastic flanges. Any unused ports are plugged. The ducts are secured with lock rings on the flanges for a reliable fit. To avoid potential air leakages all the elements are provided with rubber seals.



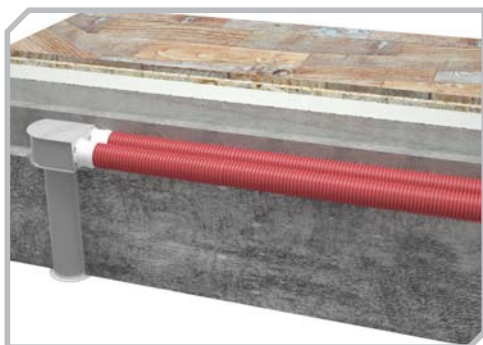
The air distribution boxes can be mounted in the horizontal position under the ceiling or in the vertical position on the floor.

AIR DISTRIBUTION BOX PLUG

Any unused ports of the air distribution box must be sealed off with plugs.



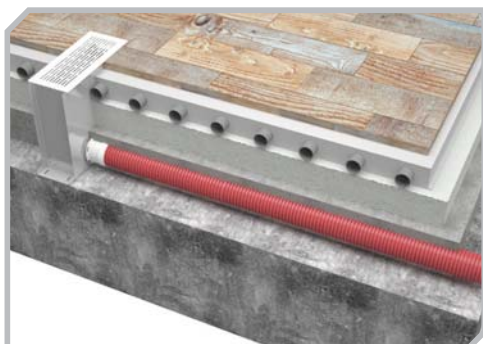
The supply and exhaust air distribution boxes are connected to the respective spigots of the air handling unit. Depending on the required air capacity one, two or more air ducts are routed into each room.



Ceiling connector coverage with cement screed



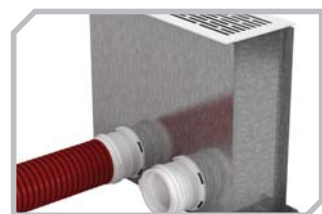
Installation of a ceiling connector with a round grille into a suspended ceiling space



Floor connector coverage with cement screed (combined with a heated floor system)



Installation of a wall connector with a rectangular grille



Depending on the required capacity the connector is fitted with one or two semi-rigid air ducts. The unused port are sealed off with a matching plug.

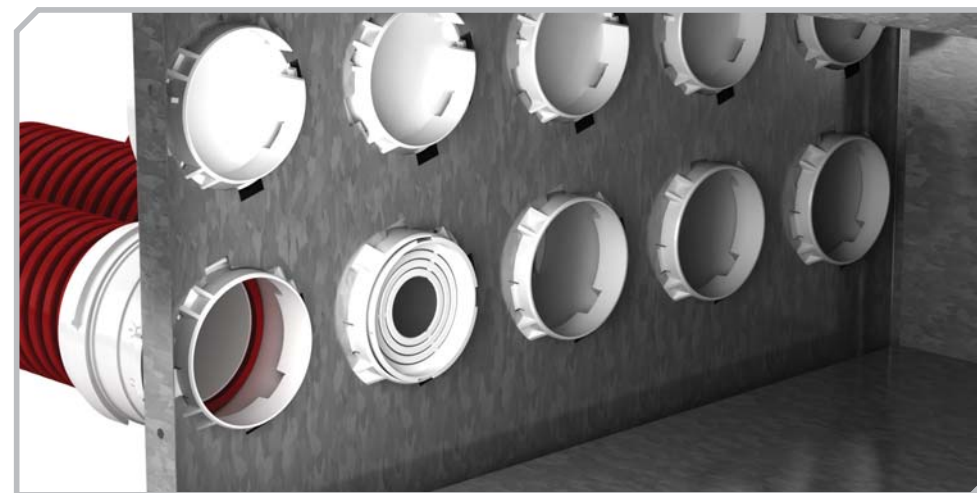


THE AIR DUCT AND THE PLUG ARE LATCHED IN PLACE
The air duct and the plug are provided with rubber seals to prevent air leakages.



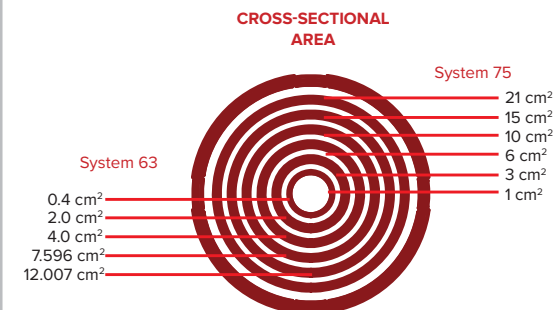
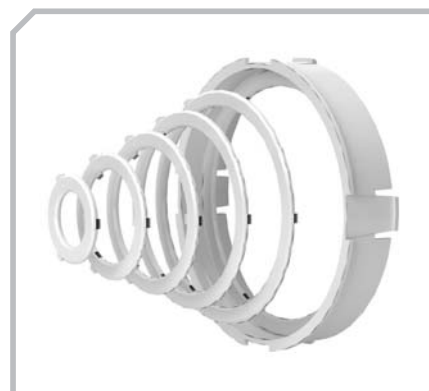
Ventilation grilles give the ventilation outlets of the connectors an aesthetically pleasing look.

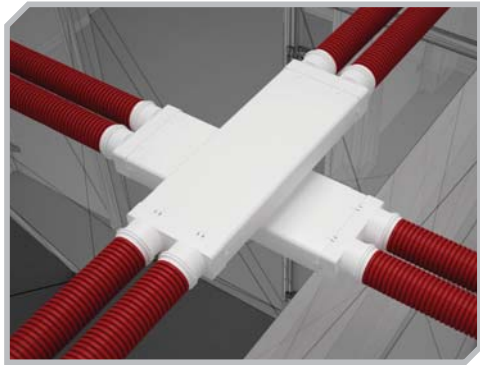
Air throttling dampers are used to regulate the air flow rate. To change the air resistance (cross-sectional area) cut the links and remove the unnecessary rings from the casting with a pair of scissors or a knife.



The air throttling dampers are inserted into spigots from the inside of the air distribution box.

AIR RESISTANCE LEVELS

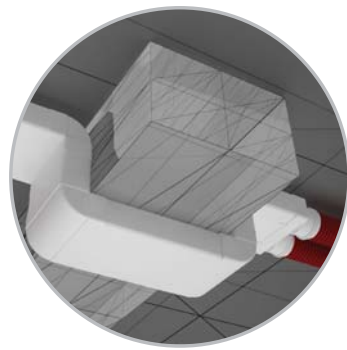
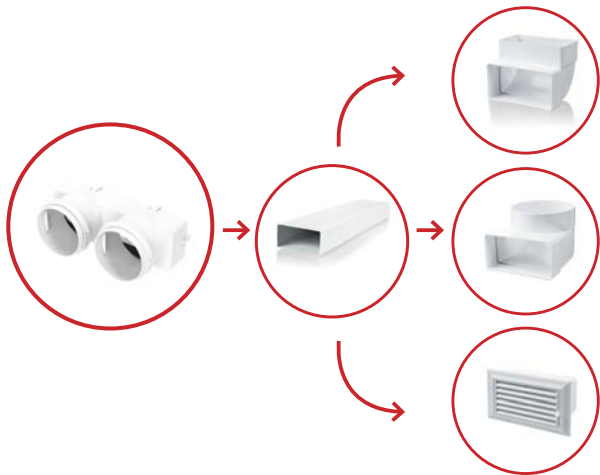




Air duct crossover using a Plastivent 204x60 system



Wall grille installation using a Plastivent 204x60 system



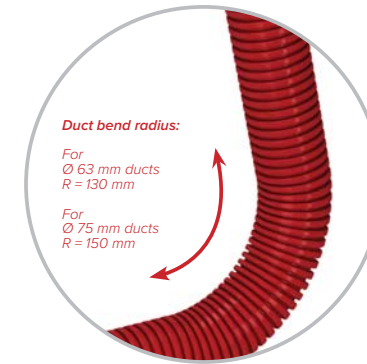
Compound bending

If the shape of the space elements (floors, partition walls or compound bends) prevent from using a FlexiVent air duct, Plastivent system elements can be used instead. Use a coupling to achieve the desired configuration.



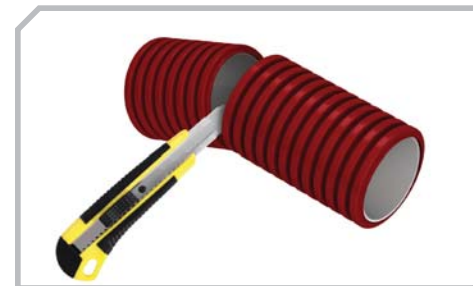
FLEXIVENT: FLEXIBLE AND STURDY

FlexiVent air ducts are made of high-quality plastic using the co-extrusion technology which involves pressing two materials through the same die to produce a single piece. Co-extruded plastic profiles have a number of advantages such as resistance to temperature changes, impact resistance and ease of care. The corrugations make semi-rigid air ducts highly flexible. This feature allows for easy bending at any point without any special tools or equipment.



The air ducts are rated for the maximum pressure of 8 kN/m²

A smooth inner surface of the air ducts makes cleaning easy



Easy to trim



Easy to clean

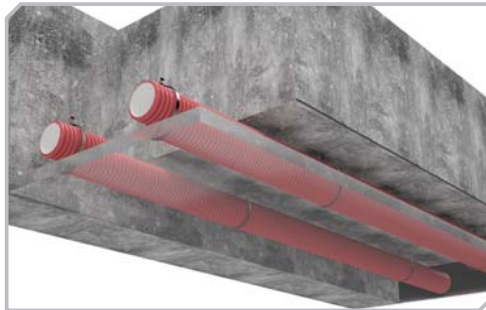
AIR DUCT LAYING OPTIONS



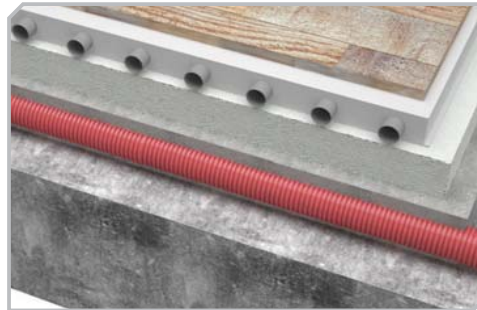
Inside wooden floor structures
through the beams



Embedded into the cement
screed of the floor



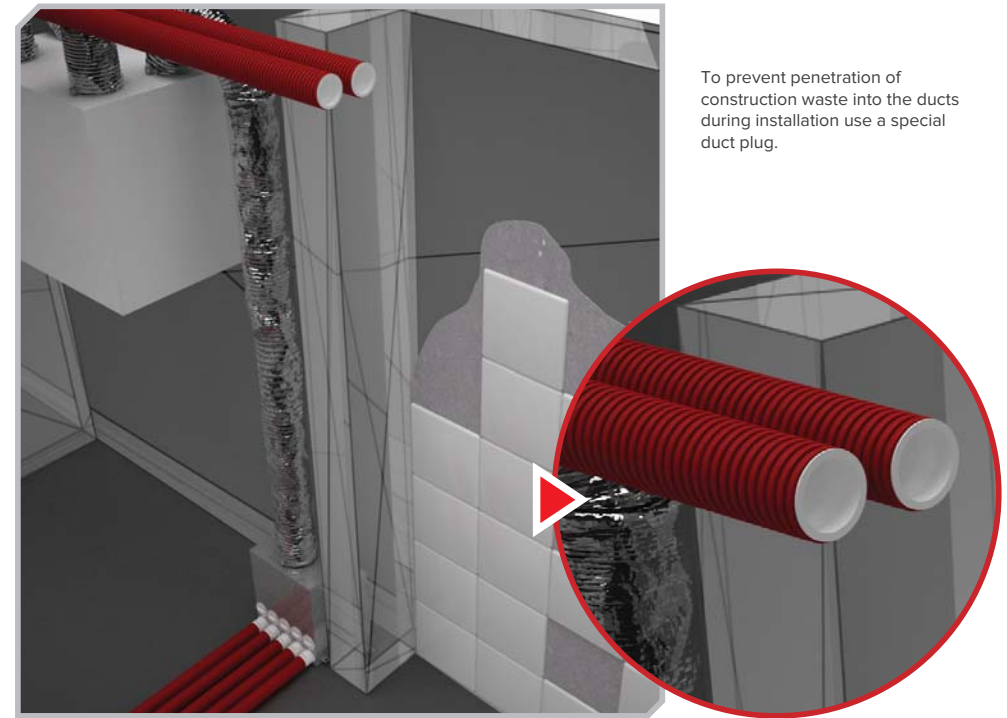
Inside the suspended
ceiling space



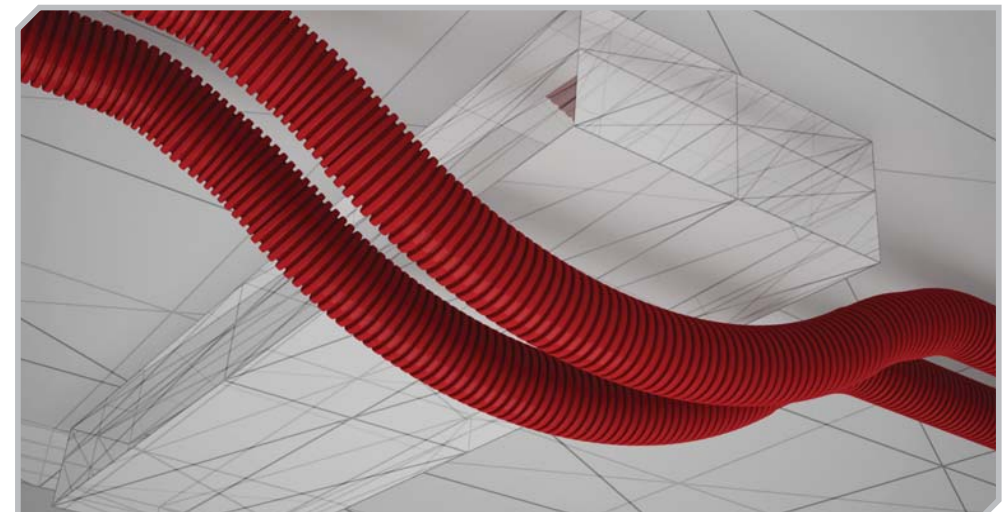
Floor connector coverage with cement screed
(combined with a heated floor system)



The duct is fitted with a slip-on seal to
retain air-tightness class C
(available as an accessory).
The lock ring (supplied) ensures reliable
fixation of the air duct.



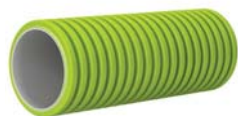
To prevent penetration of
construction waste into the ducts
during installation use a special
duct plug.





Round duct

	Model	D [mm]	L [m]
DN63	FlexiVent 01635000	63	50
DN75	FlexiVent 01755000	75	50



Round duct with antibacterial and antistatic treatment

	Model	D [mm]	L [m]
DN63	FlexiVent 0101635000	63	50
DN75	FlexiVent 0101755000	75	50



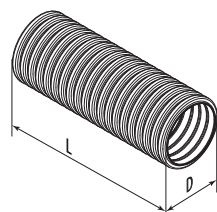
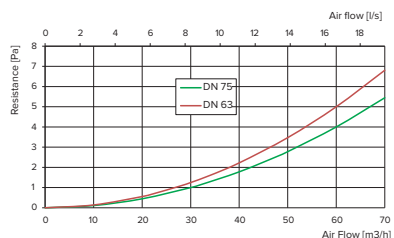
Round duct with antistatic treatment

	Model	D [mm]	L [m]
DN63	FlexiVent 0102635000	63	50
DN75	FlexiVent 0102755000	75	50

Made of high-density polyethylene (HDPE). The bend radius is 130 and 150 mm for the DN63 mm and DN75 mm duct respectively. Circular density 8 kN/m² as per EN ISO 9969. Operating temperature: from -20 to +60 °C. Smooth inner surface for low air resistance and easy cleaning.

Application: Supply or exhaust ventilation systems of residential spaces.

Nominal air duct diameter		DN 63			DN 75		
Air speed through the cross-section [m/sec]		2	2.5	3	2	2.5	3
1 duct - air flow [m ³ /h]		15	18	22	22	28	34
2 ducts - air flow [m ³ /h]		29	37	44	45	56	67
3 ducts - air flow [m ³ /h]		44	55	66	-	-	-
		Duct resistance [Pa]					
Duct length [m]	2	1.3	2.2	3.2	2.0	3.6	5.1
	4	2.7	4.4	6.4	4.0	7.1	10.2
	6	4.0	6.5	9.6	6.0	10.7	15.4
	8	5.4	8.7	12.8	8.0	14.2	20.5
	10	6.7	10.9	16.1	10.0	17.8	25.6
	12	8.1	13.1	19.3	12.0	21.3	30.7
	14	9.4	15.2	22.5	14.0	24.9	35.8
	16	10.8	17.4	25.7	16.0	28.4	41.0
18	12.1	19.6	28.9	18.0	32.0	46.1	

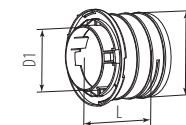


Round flange

The duct is secured with a FlexiVent lock ring (included). A duct is fitted with a slip-on FlexiVent seal to retain air-tightness class C (available as an accessory). Made of polypropylene (PP) with thermoplastic elastomer (SEBS). Operating temperature: from -20 to +60 °C.

Application: Supply or exhaust ventilation systems of residential spaces. Connecting air ducts to connectors and air distribution boxes.

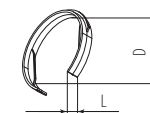
	Model	D [mm]	D1 [mm]	L [mm]
DN63	FlexiVent 0263	74	54	77
DN75	FlexiVent 0275	86	66	77



Lock ring

Made of polypropylene (PP) with thermoplastic elastomer (SEBS). Operating temperature: from -20 to +60 °C. Application: Fixation of Ø 65 and 75 mm ducts in FlexiVent flanges.

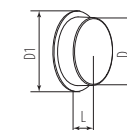
	Model	D [mm]	L [mm]
DN63	FlexiVent 0363	69	13
DN75	FlexiVent 0375	84	13



Round pipe plug

Made of polypropylene (PP) with thermoplastic elastomer (SEBS). Operating temperature: from -20 to +60 °C. **Application:** Sealing off Ø 63 and 75 mm duct ends.

	Model	D [mm]	D1 [mm]	L [mm]
DN63	FlexiVent 030163	51,4	63	20
DN75	FlexiVent 030175	63,2	75	20





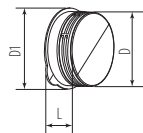
Round flange plug

Made of polypropylene (PP) with thermoplastic elastomer (SEBS).

The plug is supplied with a seal (available as an accessory) to retain airtightness class C. Operating temperature: from -20 to +60 °C.

Application: Sealing off unused FlexiVent flanges in connectors.

	Model	D [mm]	D1 [mm]	L [mm]
DN63	FlexiVent 030263	69	80	30
DN75	FlexiVent 030275	77	95	32

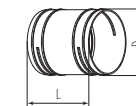


Coupling sleeve

Lock rings help secure the ducts to the flanges. The duct is fitted with a slip-on seal to retain airtightness class C (available as an accessory). Made of polypropylene (PP) with thermoplastic elastomer (SEBS). Operating temperature: from -20 to +60 °C.

Application: Supply or exhaust ventilation systems of residential spaces. Joining Ø 65 and 75 mm air ducts.

	Model	D [mm]	L [mm]
DN63	FlexiVent 060163	70	95
DN75	FlexiVent 060175	79	95



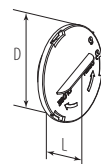
Air distribution box plug

Made of polypropylene (PP) with thermoplastic elastomer (SEBS).

The plug is supplied with a seal (available as an accessory) to retain airtightness class C. Operating temperature: from -20 to +60 °C.

Application: Sealing off unused ports in air distribution boxes.

	Model	D [mm]	L [mm]
DN63	FlexiVent 030963	84	29
DN75	FlexiVent 030975	96	29



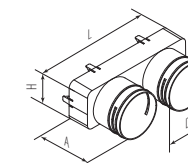
FlexiVent-Plastivent adapter sleeve

Connection dimensions: FlexiVent Ø 75 mm and Plastivent 204x60 mm. A FlexiVent duct is secured with a Ø375 lock ring (included). FlexiVent ducts are fitted with a slip-on seal to retain air-tightness class C (available as an accessory).

Made of polypropylene (PP) with thermoplastic elastomer (SEBS). Operating temperature: from -20 to +60 °C.

Application: Supply or exhaust ventilation systems of residential spaces. Joining FlexiVent ducts and Plastivent system components.

	Model	D [mm]	L [mm]	A [mm]	H [mm]
DN75	FlexiVent 060175/204x60	79	217	98	72



Seal ring

Made of synthetic rubber.

Operating temperature: from -20 to +60 °C.

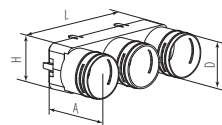
Application: Sealing Ø 63 and 75 mm ducts and FlexiVent flange plugs.

	Model	D [mm]
DN63	FlexiVent 0563	67
DN75	FlexiVent 0575	79





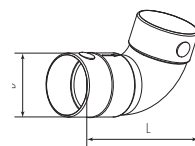
	Model	D [mm]	L [mm]	A [mm]	H [mm]
DN63	FlexiVent 060163/204x60	70	204	104	60



FlexiVent-Plastivent adapter sleeve
 Connection dimensions: FlexiVent Ø 63 mm and Plastivent 204x60 mm. A Ø 63 mm FlexiVent duct is secured with a 0363 lock ring (supplied). FlexiVent ducts are fitted with a slip-on seal to retain air-tightness class C (available as an accessory). Made of polypropylene (PP) with thermoplastic elastomer (SEBS). Operating temperature: from -20 to +60 °C.
Application: Supply or exhaust ventilation systems of residential spaces.
 Joining FlexiVent ducts and Plastivent system components.



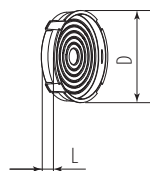
	Model	D [mm]	L [mm]
DN75	FlexiVent 060175	78	165



Round bend
 The connection dimension is Ø 75 mm. Made of PVC plastic. Operating temperature: from -20 to +60 °C.
Application: Supply or exhaust ventilation systems of residential spaces. Joining Ø 75 mm ducts at 90°.



	Model	D [mm]	L [mm]
DN63	FlexiVent 0763	50	14
DN75	FlexiVent 0775	62	14



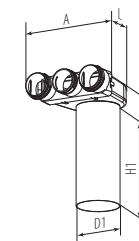
Round air throttling damper
 Inserted into FlexiVent flanges on the inside of the air distribution box. To adjust the air flow cut the unnecessary rings off the casting. Made of polypropylene (PP) with thermoplastic elastomer (SEBS). Operating temperature: from -20 to +60 °C.
Application: Supply or exhaust ventilation systems of residential spaces. Adjusting the air flow in the duct.

Plastic connectors



Ceiling-mounted round connector
 Connection diameter Ø 63 mm.
 The duct is secured with a 0363 FlexiVent lock (included). The duct is fitted with a slip-on FlexiVent 0563 seal to retain air-tightness class C (available as an accessory). Made of polypropylene (PP) with thermoplastic elastomer (SEBS). Operating temperature: from -20 to +60 °C.
Application: Supply or exhaust ventilation systems of residential spaces. Ceiling mounted. Connecting the DN125 ventilation grille to Ø 63 mm FlexiVent ducts.

	Model	D1 [mm]	L [mm]	A [mm]	H [mm]	H1 [mm]
DN63	FlexiVent 0810125/63x3	128	282	251	367	300



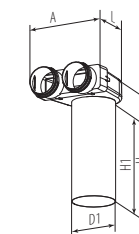
FlexiVent 0810125/63x3

Air flow capacity [m³/h]	Number of duct connections	Air supply	Air exhaust
		Resistance [Pa]	Resistance [Pa]
25	1	3.0	1.9
50	2	4.5	3.1
75	3	7.0	5.0



Ceiling-mounted round connector
 Connection diameter Ø 75 mm.
 The duct is secured with a FlexiVent 0375 lock ring (included). The duct is fitted with a slip-on FlexiVent 0575 seal to retain air-tightness class C (available as an accessory). Made of polypropylene (PP) with thermoplastic elastomer (SEBS). Operating temperature: from -20 to +60 °C.
Application: Supply or exhaust ventilation systems of residential spaces. Ceiling-mounted. Connecting the DN125 ventilation grille to Ø 75 mm FlexiVent ducts.

	Model	D1 [mm]	L [mm]	A [mm]	H [mm]	H1 [mm]
DN75	FlexiVent 0810125/75x2	128	282	218	367	300



FlexiVent 0810125/75x2

Air flow capacity [m³/h]	Number of duct connections	Air supply	Air exhaust
		Resistance [Pa]	Resistance [Pa]
30	1	3.2	2.1
60	2	5.4	3.7

Metal connectors

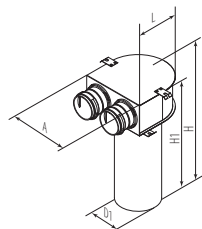


Ceiling-mounted metal connector

Connection diameter Ø 63 mm and Ø 75 mm. The duct is secured with a lock ring (included). The duct is fitted with a slip-on seal to retain air-tightness class C (available as an accessory). The connector is made of metal and supplied with polypropylene spigots.

Application: Supply or exhaust ventilation systems of residential spaces. Ceiling mounted. Connecting the DN125 ventilation grille to FlexiVent ducts.

	Model	D1 [mm]	L [mm]	A [mm]	H [mm]	H1 [mm]
DN63	FlexiVent 0811125/63x2	127	195,5	200	401,3	300
DN75	FlexiVent 0811125/75x2	127	195,5	200	401,3	300



FlexiVent 0811125/63x2

Air flow capacity [m³/h]	Number of duct connections	Air supply		Air exhaust	
		Resistance [Pa]	Resistance [Pa]	Resistance [Pa]	Resistance [Pa]
25	1	3.0	1.9		
50	2	4.5	3.1		

FlexiVent 0811125/75x2

Air flow capacity [m³/h]	Number of duct connections	Air supply		Air exhaust	
		Resistance [Pa]	Resistance [Pa]	Resistance [Pa]	Resistance [Pa]
30	1	3.2	2.1		
60	2	5.4	3.7		

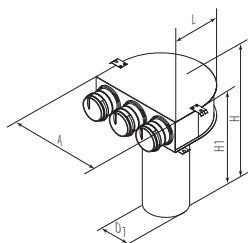


Ceiling-mounted metal connector

Connection diameter Ø 63 mm. Lock rings (included) secure the ducts in place. The duct is fitted with a slip-on seal to retain air-tightness class C (available as an accessory). The connector is made of metal and supplied with polypropylene spigots.

Application: Supply or exhaust ventilation systems of residential spaces. Ceiling mounted. Connecting the DN125 ventilation grille to FlexiVent ducts.

	Model	D1 [mm]	L [mm]	A [mm]	H [mm]	H1 [mm]
DN63	FlexiVent 0811125/63x3	127	245,1	300	401,3	300



FlexiVent 0811125/63x3

Air flow capacity [m³/h]	Number of duct connections	Air supply		Air exhaust	
		Resistance [Pa]	Resistance [Pa]	Resistance [Pa]	Resistance [Pa]
25	1	3.0	1.9		
50	2	4.5	3.1		
75	3	7.0	5.0		

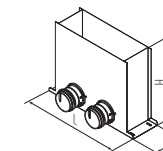


Floor-mounted metal connector

Connection diameter Ø 63 mm and Ø 75 mm. Lock rings help secure the ducts to the flanges. The ducts are fitted with slip-on seals to retain air-tightness class C (available as an accessory). The connector is made of metal and supplied with polypropylene spigots.

Application: Supply or exhaust ventilation systems of residential spaces. Floor mounted. Connecting the floor ventilation grille to FlexiVent ducts.

	Model	L [mm]	A [mm]	H [mm]
DN63	FlexiVent 0821300x100/63x2	401	115	300
DN75	FlexiVent 0821300x100/75x2	401	115	300



FlexiVent 0821300x100/63x2

Air flow capacity [m³/h]	Number of duct connections	Air supply		Air exhaust	
		Resistance [Pa]	Resistance [Pa]	Resistance [Pa]	Resistance [Pa]
25	1	2.9	1.8		
50	2	4.3	2.8		

FlexiVent 0821300x100/75x2

Air flow capacity [m³/h]	Number of duct connections	Приток		Вытяжка	
		Resistance [Pa]	Resistance [Pa]	Resistance [Pa]	Resistance [Pa]
30	1	3.1	2.0		
60	2	5.1	3.4		

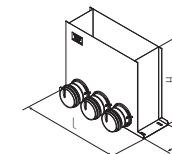


Floor-mounted metal connector

Connection diameter Ø 63 mm. Lock rings help secure the ducts to the flanges. The ducts are fitted with slip-on seals to retain air-tightness class C (available as an accessory). The connector is made of metal and supplied with polypropylene spigots.

Application: Supply or exhaust ventilation systems of residential spaces. Floor-mounted. Connecting the floor ventilation grille to FlexiVent ducts.

	Model	L [mm]	A [mm]	H [mm]
DN63	FlexiVent 0821300x100/63x3	401	115	300



FlexiVent 0821300x100/63x3

Air flow capacity [m³/h]	Number of duct connections	Air supply		Air exhaust	
		Resistance [Pa]	Resistance [Pa]	Resistance [Pa]	Resistance [Pa]
25	1	2.9	1.8		
50	2	4.3	2.8		
75	3	6.5	4.5		

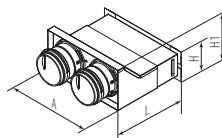


Wall-mounted metal connector

Connection diameter Ø 63 mm and Ø 75 mm. The duct is secured with a lock ring (included). The duct is fitted with a slip-on seal to retain air-tightness class C (available as an accessory). The connector is made of metal and supplied with polypropylene spigots. Operating temperature: from -20 to +60 °C.

Application: Supply or exhaust ventilation systems of residential spaces. Wall-mounted. Connecting the 200x55 wall ventilation grille to FlexiVent ducts.

	Model	L [mm]	A [mm]	H [mm]	H1 [mm]
DN63	FlexiVent 0832200x55/63x2	203,5	176,5	75	112
DN75	FlexiVent 0832200x55/75x2	203,5	176,5	75	112



FlexiVent 0832200x55/63x2

Air flow capacity [m³/h]		Air supply		Air exhaust	
Air flow capacity [m³/h]	Number of duct connections	Resistance [Pa]	Resistance [Pa]	Resistance [Pa]	Resistance [Pa]
25	1	3.1	3.1	1.9	1.9
50	2	4.7	4.7	3.3	3.3

FlexiVent 0832200x55/75x2

Air flow capacity [m³/h]		Air supply		Air exhaust	
Air flow capacity [m³/h]	Number of duct connections	Resistance [Pa]	Resistance [Pa]	Resistance [Pa]	Resistance [Pa]
30	1	3,3	3,3	2,1	2,1
60	2	5,7	5,7	4,1	4,1

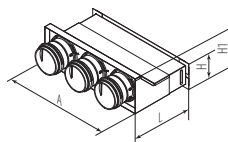


Wall-mounted metal connector

Connection diameter Ø 63 mm. The duct is secured with a lock ring (included). The duct is fitted with a slip-on seal to retain air-tightness class C (available as an accessory). The connector is made of metal and supplied with polypropylene spigots. Operating temperature: from -20 to +60 °C.

Application: Supply or exhaust ventilation systems of residential spaces. Wall-mounted. Connecting the 300x55 wall ventilation grille to FlexiVent ducts.

	Model	L [mm]	A [mm]	H [mm]	H1 [mm]
DN63	FlexiVent 0832300x55 /63x3	303,5	172,4	75	112



FlexiVent 0832300x55/63x3

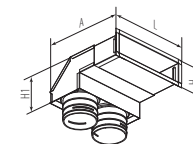
Air flow capacity [m³/h]		Air supply		Air exhaust	
Air flow capacity [m³/h]	Number of duct connections	Resistance [Pa]	Resistance [Pa]	Resistance [Pa]	Resistance [Pa]
25	1	2.9	2.9	1.8	1.8
50	2	4.3	4.3	2.8	2.8
75	3	6.5	6.5	4.5	4.5



Wall-mounted metal connector

Connection diameter Ø 63 mm. The duct is secured with a lock ring (included). The duct is fitted with a slip-on seal to retain air-tightness class C (available as an accessory). The connector is made of metal and supplied with polypropylene spigots. Operating temperature: from -20 to +60 °C.

Application: Supply or exhaust ventilation systems of residential spaces. Wall-mounted. Connecting the 200x55 wall ventilation grille to FlexiVent ducts.



0833200x55/63x2

Air flow capacity [m³/h]		Air supply		Air exhaust	
Air flow capacity [m³/h]	Number of duct connections	Resistance [Pa]	Resistance [Pa]	Resistance [Pa]	Resistance [Pa]
25	1	3.1	3.1	1.9	1.9
50	2	4.7	4.7	3.3	3.3

0833200x55/75x2

Air flow capacity [m³/h]		Air supply		Air exhaust	
Air flow capacity [m³/h]	Number of duct connections	Resistance [Pa]	Resistance [Pa]	Resistance [Pa]	Resistance [Pa]
30	1	3.3	3.3	2.1	2.1
60	2	5.7	5.7	4.1	4.1

Grilles

Vents grille designation	Cross-sectional area. m ²	Air speed through the cross-section [m/sec]					
		0.5	1	1.5	2	2.5	3
MV 120 V	0.0083	15	30	45	60	75	90
MV 125 PF	0.025	45	90	135	180	225	270
FlexiVent 0920300x100	0.0123	22	44	66	89	111	133
FlexiVent 0921300x100	0.0114	21	41	62	82	103	123
FlexiVent 0922300x100	0.0107	19	39	58	77	96	116
FlexiVent 0923300x100	0.0107	19	39	58	77	96	116
FlexiVent 0924300x100	0.016	29	58	86	115	144	173
FlexiVent 0925300x100	0.016	29	58	86	115	144	173
FlexiVent 0926300x100	0.0132	24	48	71	95	119	143
FlexiVent 0927300x100	0.0132	24	48	71	95	119	143
FlexiVent 0930200x55	0.0069	12	25	37	50	62	75
FlexiVent 0930300x55	0.0155	28	56	84	112	140	168



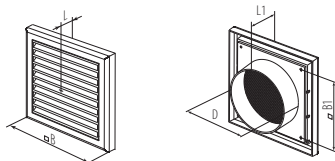
Grille

Connection diameter Ø 125 mm.
Made of ABS plastic or polystyrene.
The cross-sectional area is 0.0083 m².
Secured with self-tapping screws.
Includes a mosquito screen.

Application: Supply or exhaust ventilation systems of residential spaces.

Installed into wall-mounted connectors.

Model	B [mm]	L [mm]	B1 [mm]	L1 [mm]	D [mm]
MV 120 V	186	15	142	45	125



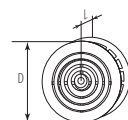
Grille

Connection diameter Ø 125 mm.
Made of ABS plastic or polystyrene.
The cross-sectional area is 0.025 m².
Includes a mosquito screen.

Application: Supply or exhaust ventilation systems of residential spaces.

Installed into wall-mounted connectors.

Model	D [mm]	L [mm]
MV 125 PF	125	14



Disc valve

Connection diameter Ø 125 mm.
Made of ABS plastic or polystyrene.
The cross-sectional area is 0.0008 m².
Smooth air flow regulation.

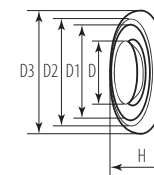
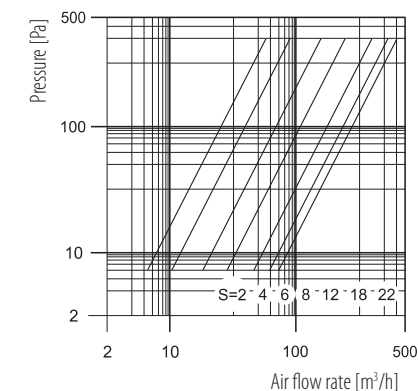
Secured with spring brackets.

Application: Supply or exhaust ventilation systems of residential spaces.

Installed into wall-mounted connectors.

Model	D [mm]	D1 [mm]	D2 [mm]	D3 [mm]	H, mm
A 125 VB	125	105	110	166	70

A 125 VR



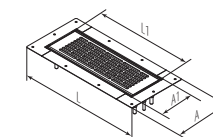
Floor-mounted metal grille

The connection dimension is 300x100 mm.
The grille is made of metal with a polymer coating. The cross-sectional area is 0.016 m².
Secured with springs.

Application: Supply or exhaust ventilation systems of residential spaces.

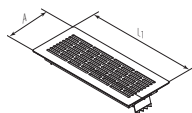
Installed into floor-mounted connectors.

Model	L [mm]	L1 [mm]	A [mm]	A1 [mm]
FlexiVent 0920300x100	377,4	159	400	200





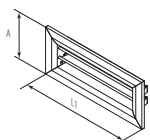
Model	A [mm]	L [mm]
FlexiVent 0924300x100	151	351



Floor-mounted metal overlay grille
The connection dimension is 300x100 mm. The grille is made of metal with a polymer coating. The cross-sectional area is 0.016 m². Secured with springs.
Application: Supply or exhaust ventilation systems of residential spaces. Installed into floor-mounted connectors.



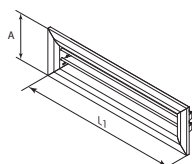
Model	A [mm]	L1 [mm]
FlexiVent 0930200x55	97	230



Wall-mounted metal grille
The connection dimension is 200x55 mm. The grille is made of aluminium with a polymer coating. The cross-sectional area is 0.0069 m². Secured with springs.
Application: Supply or exhaust ventilation systems of residential spaces. Installed into wall-mounted connectors.



Model	A [mm]	L1 [mm]
FlexiVent 0930300x55	330	97



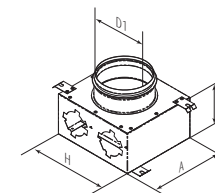
Wall-mounted metal grille
The connection dimension is 300x55 mm. The grille is made of aluminium with a polymer coating. The cross-sectional area is 0.0069 m². Secured with springs.
Application: Supply or exhaust ventilation systems of residential spaces. Installed into wall-mounted connectors.

Air distribution boxes



	Model	D1 [mm]	L [mm]	A [mm]	H [mm]
DN63	FlexiVent 1001125/63x2	159	400	200	100
DN75	FlexiVent 1001125/75x2	159	400	200	100

Metal air distribution box
The main air duct flange is sealed with a rubber gasket. The ducts are connected using FlexiVent flanges of appropriate size. The flanges are not included. Any unused ports are sealed off with FlexiVent air distribution box plugs. Made of steel with aluzinc coating.
Application: Supply or exhaust ventilation systems of residential spaces. Distribution of air from the ventilation unit through the ducts.



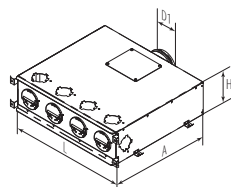
FlexiVent 1001125/63x2		Air supply	Air exhaust
Air flow capacity [m ³ /h]	Number of duct connections	Resistance [Pa]	Resistance [Pa]
25	1	3.0	1.9
50	2	4.5	3.1

FlexiVent 1001125/75x2		Air supply	Air exhaust
Air flow capacity [m ³ /h]	Number of duct connections	Resistance [Pa]	Resistance [Pa]
30	1	3.2	2.1
60	2	5.4	3.7



	Model	D1 [mm]	L [mm]	A [mm]	H [mm]
DN63	FlexiVent 1001125/63x6	124	554	470	150
DN75	FlexiVent 1001125/75x6	124	554	470	150

Metal air distribution box
 The main air duct flange is sealed with a rubber gasket. The ducts are connected using FlexiVent flanges of appropriate size. The flanges are not included. Any unused ports are sealed off with FlexiVent air distribution box plugs.
 Made of steel with aluzinc coating. Internal sound insulation layer.
Application: Supply or exhaust ventilation systems of residential spaces. Distribution of air from the ventilation unit through the ducts.



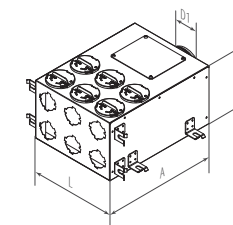
FlexiVent 1001125/63x6		Air supply	Air exhaust
Air flow capacity [m³/h]	Number of duct connections	Resistance [Pa]	Resistance [Pa]
25	1	2.6	1.6
50	2	2.9	1.9
75	3	3.4	2.3
100	4	4.1	2.9
125	5	5.0	3.8
150	6	6.1	4.7

FlexiVent 1001125/75x6		Air supply	Air exhaust
Air flow capacity [m³/h]	Number of duct connections	Resistance [Pa]	Resistance [Pa]
30	1	2.6	1.6
60	2	3.1	2.0
90	3	3.8	2.7
120	4	4.8	3.6
150	5	6.1	4.7
180	6	7.7	6.2



Metal air distribution box
 The main air duct flange is sealed with a rubber gasket. The ducts are connected using FlexiVent flanges of appropriate size. The flanges are not included. Any unused ports are sealed off with FlexiVent air distribution box plugs.
 Made of steel with aluzinc coating. Internal sound insulation layer.
Application: Supply or exhaust ventilation systems of residential spaces.
 Distribution of air from the ventilation unit through the ducts.

	Model	D1 [mm]	L [mm]	A [mm]	H [mm]
DN63	FlexiVent 1002125/63x6	124	300	400	202
DN75	FlexiVent 1002125/75x6	124	300	400	202



FlexiVent 1002125/63x6		Air supply	Air exhaust
Air flow capacity [m³/h]	Number of duct connections	Resistance [Pa]	Resistance [Pa]
25	1	2.6	1.6
50	2	2.8	1.8
75	3	3.2	2.1
100	4	3.8	2.6
125	5	4.5	3.3
150	6	5.4	4.0

FlexiVent 1002125/75x6		Air supply	Air exhaust
Air flow capacity [m³/h]	Number of duct connections	Resistance [Pa]	Resistance [Pa]
30	1	2.6	1.6
60	2	3.0	1.9
90	3	3.5	2.4
120	4	4.3	3.1
150	5	5.4	4.0
180	6	6.6	5.1



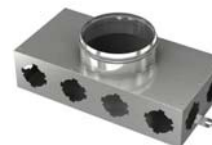
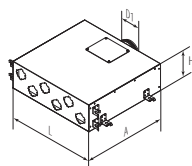
	Model	D1 [mm]	L [mm]	A [mm]	H [mm]
DN63	FlexiVent 1003125/63x6	124	530	500	162
DN75	FlexiVent 1003125/75x6	124	530	500	162

Metal air distribution box

The main air duct flange is sealed with a rubber gasket. The ducts are connected using FlexiVent flanges of appropriate size. The flanges are not included. Any unused ports are sealed off with FlexiVent air distribution box plugs. Made of steel with aluzinc coating. Internal sound insulation layer.

Application: Supply or exhaust ventilation systems of residential spaces.

Distribution of air from the ventilation unit through the ducts.



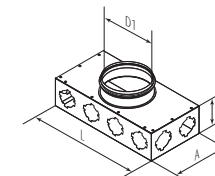
	Model	D1 [mm]	L [mm]	A [mm]	H [mm]
DN63	FlexiVent 1001160/63x8	159	400	200	100
DN75	FlexiVent 1001160/75x8	159	400	200	100

Metal air distribution box

The main air duct flange is sealed with a rubber gasket. The ducts are connected using FlexiVent flanges of appropriate size. The flanges are not included. Any unused ports are sealed off with FlexiVent air distribution box plugs. Made of steel with aluzinc coating.

Application: Supply or exhaust ventilation systems of residential spaces.

Distribution of air from the ventilation unit through the ducts.



FlexiVent 1003125/63x6

Air flow capacity [m³/h]	Number of duct connections	Air supply	Air exhaust
		Resistance [Pa]	Resistance [Pa]
25	1	2.6	1.6
50	2	2.8	1.8
75	3	3.2	2.1
100	4	3.8	2.6
125	5	4.5	3.3
150	6	5.4	4.0

FlexiVent 1003125/75x6

Air flow capacity [m³/h]	Number of duct connections	Air supply	Air exhaust
		Resistance [Pa]	Resistance [Pa]
30	1	2.6	1.6
60	2	3.0	1.9
90	3	3.5	2.4
120	4	4.3	3.1
150	5	5.4	4.0
180	6	6.6	5.1

FlexiVent 1001160/63x8

Air flow capacity [m³/h]	Number of duct connections	Air supply	Air exhaust
		Resistance [Pa]	Resistance [Pa]
25	1	2.6	1.6
50	2	3.0	1.9
75	3	3.5	2.4
100	4	4.3	3.2
125	5	5.4	4.1
150	6	6.6	5.3
175	7	8.1	6.6
200	8	9.9	8.2

FlexiVent 1001160/63x8

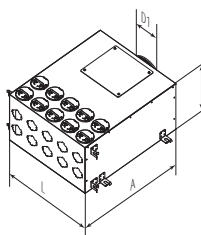
Air flow capacity [m³/h]	Number of duct connections	Air supply	Air exhaust
		Resistance [Pa]	Resistance [Pa]
30	1	2.7	1.7
60	2	3.2	2.1
90	3	4.0	2.9
120	4	5.1	3.9
150	5	6.6	5.3
180	6	8.5	6.9
210	7	10.6	8.9
240	8	13.1	11.2



	Model	D1 [mm]	L [mm]	A [mm]	H [mm]
DN63	FlexiVent 1001160/63x10	159	500	500	202
DN75	FlexiVent 1001160/75x10	159	500	500	202

Metal air distribution box
 The main air duct flange is sealed with a rubber gasket. The ducts are connected using FlexiVent flanges of appropriate size. The flanges are not included. Any unused ports are sealed off with FlexiVent air distribution box plugs.
 Made of steel with aluzinc coating.
 Internal sound insulation layer.

Application: Supply or exhaust ventilation systems of residential spaces.
 Distribution of air from the ventilation unit through the ducts.



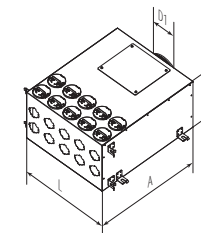
FlexiVent 1001160/63x10		Air supply	Air exhaust
Air flow capacity [m³/h]	Number of duct connections	Resistance [Pa]	Resistance [Pa]
25	1	2.6	1.6
50	2	2.8	1.8
75	3	3.2	2.1
100	4	3.8	2.6
125	5	4.5	3.3
150	6	5.4	4.0
175	7	6.4	4.9
200	8	7.6	6.0
225	9	9.0	7.2
250	10	10.5	8.5

FlexiVent 1001160/75x10		Air supply	Air exhaust
Air flow capacity [m³/h]	Number of duct connections	Resistance [Pa]	Resistance [Pa]
30	1	2.6	1.6
60	2	3.0	1.9
90	3	3.5	2.4
120	4	4.3	3.1
150	5	5.4	4.0
180	6	6.6	5.1
210	7	8.1	6.4
240	8	9.9	8.0
270	9	11.8	9.7
300	10	14.0	11.6



Metal air distribution box
 The main air duct flange is sealed with a rubber gasket. The ducts are connected using FlexiVent flanges of appropriate size. The flanges are not included. Any unused ports are sealed off with FlexiVent air distribution box plugs.

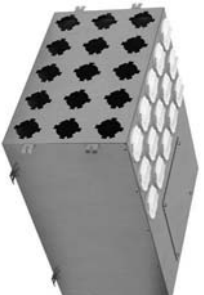
Made of steel with aluzinc coating.
 Internal sound insulation layer.
Application: Supply or exhaust ventilation systems of residential spaces.
 Distribution of air from the ventilation unit through the ducts.



	Model	D1 [mm]	L [mm]	A [mm]	H [mm]
DN63	FlexiVent 1001200/63x10	199	500	600	302
DN75	FlexiVent 1001200/75x10	199	500	600	302

FlexiVent 1001200/63x10		Air supply	Air exhaust
Air flow capacity [m³/h]	Number of duct connections	Resistance [Pa]	Resistance [Pa]
25	1	2.6	1.6
50	2	2.8	1.8
75	3	3.2	2.1
100	4	3.8	2.6
125	5	4.5	3.3
150	6	5.4	4.0
175	7	6.4	4.9
200	8	7.6	6.0
225	9	9.0	7.2
250	10	10.5	8.5

FlexiVent 1001200/75x10		Air supply	Air exhaust
Air flow capacity [m³/h]	Number of duct connections	Resistance [Pa]	Resistance [Pa]
30	1	2.6	1.6
60	2	3.0	1.9
90	3	3.5	2.4
120	4	4.3	3.1
150	5	5.4	4.0
180	6	6.6	5.1
210	7	8.1	6.4
240	8	9.9	8.0
270	9	11.8	9.7
300	10	14.0	11.6



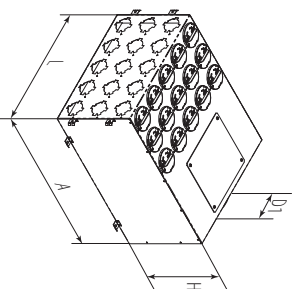
	Model	D1 [mm]	L [mm]	A [mm]	H [mm]
DN63	FlexiVent 1001200/63x15	199	500	600	302
DN75	FlexiVent 1001200/75x15	199	500	600	302

Metal air distribution box

The main air duct flange is sealed with a rubber gasket. The ducts are connected using FlexiVent flanges of appropriate size. The flanges are not included. Any unused ports are sealed off with

FlexiVent air distribution box plugs. Made of steel with aluzinc coating. Internal sound insulation layer.

Application: Supply or exhaust ventilation systems of residential spaces. Distribution of air from the ventilation unit through the ducts.



FlexiVent 1001200/63x15		Air supply	Air exhaust
Air flow capacity [m³/h]	Number of duct connections	Resistance [Pa]	Resistance [Pa]
25	1	2.6	1.6
50	2	2.8	1.8
75	3	3.2	2.1
100	4	3.8	2.6
125	5	4.5	3.3
150	6	5.4	4.0
175	7	6.4	4.9
200	8	7.6	6.0
225	9	9.0	7.2
250	10	10.5	8.5
275	11	12.2	10.0
300	12	14.0	11.6
325	13	16.0	13.3
350	14	18.2	15.2
375	15	20.5	17.3

FlexiVent 1001200/75x15		Air supply	Air exhaust
Air flow capacity [m³/h]	Number of duct connections	Resistance [Pa]	Resistance [Pa]
25	1	2.6	1.6
50	2	3.0	1.9
75	3	3.5	2.4
100	4	4.3	3.1
125	5	5.4	4.0
150	6	6.6	5.1
175	7	8.1	6.4
200	8	9.9	8.0
225	9	11.8	9.7
250	10	14.0	11.6
275	11	16.4	13.7
300	12	19.1	16.0
325	13	22.0	18.5
350	14	25.1	21.3
375	15	28.4	24.2