

INSTALLATION INSTRUCTION

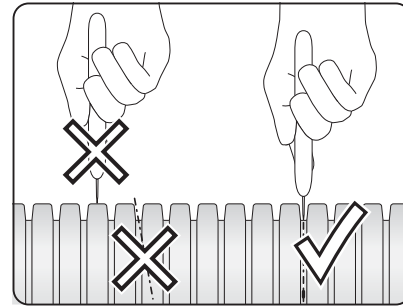
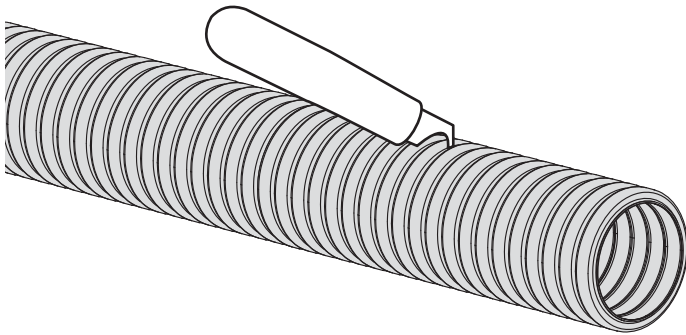


MODULAR AIR DISTRIBUTION SYSTEM FLEXIVENT

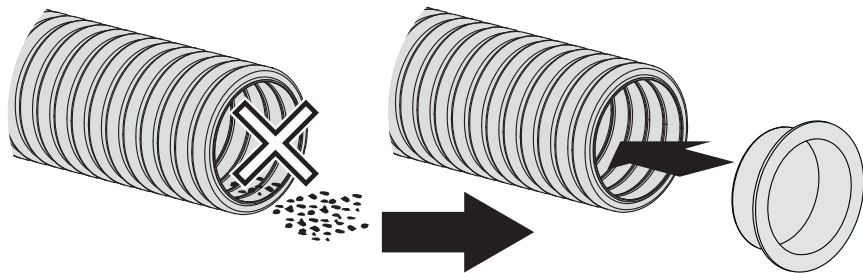
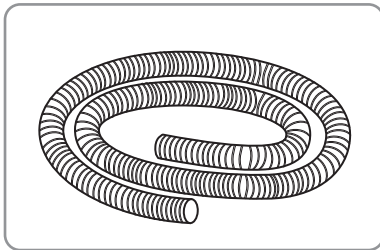
MODULAR AIR DUCT



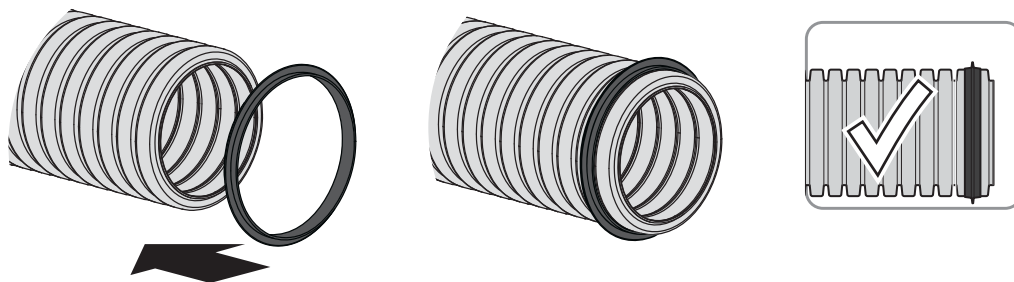
- 1** Cut an air duct in a required length.



- 2** Cover the vents with caps to prevent ingress of foreign objects in the air ducts during mounting.



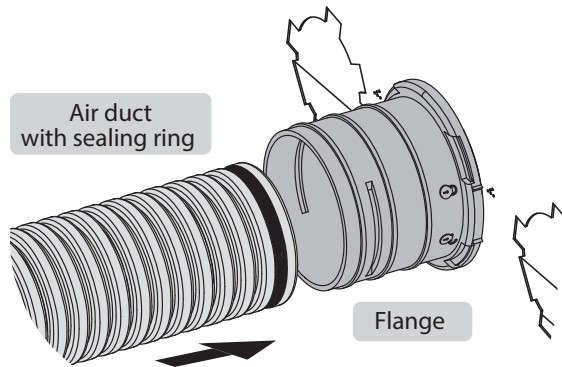
- 3** Use a sealing ring (available as a specially ordered accessory) on the air duct for airtight connection with the flange.



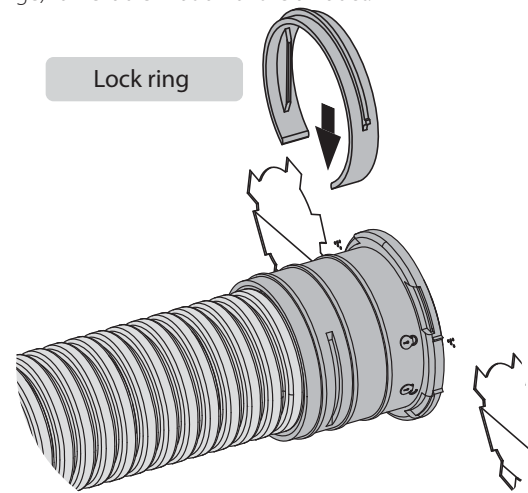
- 4** Insert the air duct with the sealing ring into the flange.

ATTENTION!

If the air ducts and the air distribution box are planned to be embedded in concrete, seal the joint between the air duct and the flange with a cold shrink sleeve.



- 5** Use a lock ring (included in the delivery set of the flange) for reliable fixation of the air duct.



- 6** Attach the air ducts to the mounting surface using a mounting perforated tape.

Bend radius:

R 130 mm for Ø 63 mm
R 150 mm for Ø 150 mm

