

VENTS VDO-Serie



Axial-Entrauchungsventilatoren
mit einer Förderleistung
bis **108 000 m³/h**
mit einer Feuerwiderstandsdauer:
200 °C/2 Stunden
300 °C/2 Stunden
400 °C/2 Stunden

■ Bezeichnungsschlüssel

VDO: Axial-Entrauchungsventilator

Standardgröße (Rohrdurchmesser), mm

Gehäuseausführung: **_:** Standardgehäuse; **K:** verkürztes Gehäuse

Polanzahl des Motors

Phasenzahl des Motors: **E:** Einphasen-, **D:** Dreiphasen-

Leistung des Motors, kW

Zahl der Laufradschaufeln, St.

Anstellwinkel der Laufradschaufeln, °

Material der Laufradschaufeln:

AL: Aluminium

Klimaklasse:

U: gemäßigtes Klima

HL: kaltes Klima (-40...+40 °C)

UHL: kaltes gemäßigtes Klima (-60...+40 °C)

T: tropisches Klima (-10...+50 °C)

M: gemäßigt kühles Meeresklima (-40...+40 °C)

O: allgemeine klimatische Ausführung (außer Meeresklima) (-60...+50 °C)

OM: allgemeine klimatische Ausführung (-40...+40 °C)

W: universale klimatische Ausführung (-60...+50 °C)

Anordnungsart:

1: draußen

2: unter Schuppen oder drinnen mit den gleichen Bedingungen wie draußen, außer Sonneneinstrahlung und Niederschläge

3: in geschlossenen Räumen ohne künstliche Klimatisierung

4: in geschlossenen Räumen mit künstlicher Klimatisierung (Belüftung, Heizung)

5: in Feuchträumen ohne künstliche Klimatisierung

Feuerwiderstandsdauer:

200/2 – 200 °C, 2 Stunden

300/2 – 300 °C, 2 Stunden

400/2 – 400 °C, 2 Stunden

■ Verwendungszweck

Die Ventilatoren werden für die Entrauchung im Brandfall und Entfernung der heißen Außenluft verwendet. Die Ventilatoren sind auch für allgemeine Belüftung geeignet.

■ Anwendung

Die Ventilatoren werden bei einer Umgebungstemperatur von -60 bis +50 °C (je nach Klimaklasse, siehe Bezeichnungsschlüssel) für den Dauerbetrieb eingesetzt. Bei einer Temperatur von +200 °C, +300 °C, +400 °C im Entrauchungsmodus - 2 Stunden.

■ Aufbau

Der Ventilator besteht aus Gehäuse, Laufrad und Motor. Das Metall-Gehäuse mit ausgerollten Flanschen bietet eine hohe Steifigkeit und minimale Abstände zwischen dem Gehäuse und dem Laufrad.

Eine Zugangstür ist am Ventilatorgehäuse vorgesehen. Alle Komponenten des Gehäuses sind zum Schutz vor Umweltrisiken pulverbeschichtet. Das Gewicht des Ventilators kann von dem im Katalog angegebenen Gewicht abweichen und hängt von den verwendeten Einheiten (Motor, Anschlusskasten usw.) ab.

■ Elektromotor

Die Ventilatoren sind mit dreiphasigen Elektromotoren mit 400 V/50 Hz ausgestattet. Je nach Modell werden 1- oder 2-stufige Motoren verwendet. Die einstufigen

Ventilatoren sind mit 2-, 4- oder 6-poligen Motoren ausgestattet. Die zweistufigen Ventilatoren sind mit 2/4- oder 4/8-poligen Motoren ausgestattet.

■ Laufrad

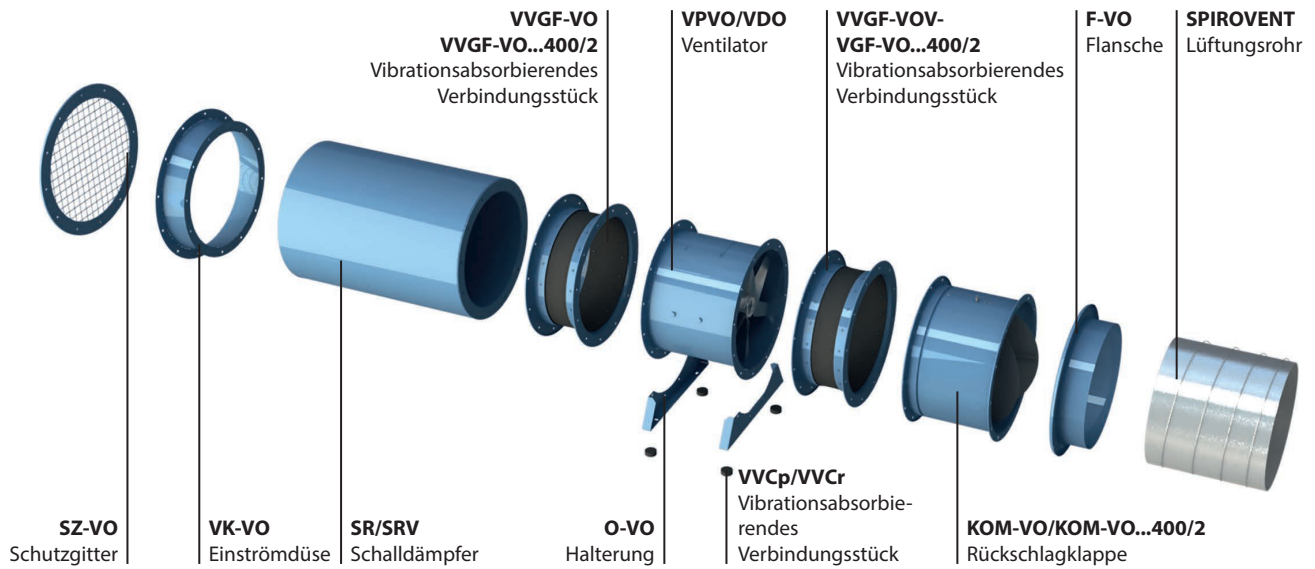
Je nach der Standardgröße und der erforderlichen Leistung sind die Ventilatoren mit Laufräder mit 6 bzw. 8 Laufradschaufeln und einem Neigungswinkel von 20° bis 50° mit einem Pitch von 2,5 bis 5° verwendet, um eine genaue Abstimmung mit dem Arbeitspunkt sicherzustellen. Die speziell entwickelte Laufradschaufeln bieten einen hohen Wirkungsgrad des Ventilators bei niedrigem Geräuschpegel. Das Laufrad ist dynamisch ausgewuchtet. Das geringe Gewicht und Massenträgheitsmoment des Laufrades tragen zum schnellen Start des Ventilators bei. Die Laufradschaufeln des Ventilators sind aus Aluminiumguss ausgestattet.

■ Montage

Die Ventilatoren werden auf jeder ebenen Oberfläche oder direkt in einen Luftkanal montiert. Die Ventilatoren sind für eine horizontale und vertikale Montage geeignet. Bei der Montage des Ventilators in einem Lüftungsrohr erfolgt die Verbindung zu den Lüftungsrohren mittels Flanschen. Für die Boden-, Wand- oder Deckenmontage des Ventilators sind die O-VO Halterungen verwendet (im Lieferumfang nicht erhalten, separat verfügbar). Die Ventilatoren sind für die Montage auf Hausdächern geeignet.

Gehäuse
Motor
Laufrad
Ausführung
VDO-630K-2D/5.5-8/35/AL-U1-300/2

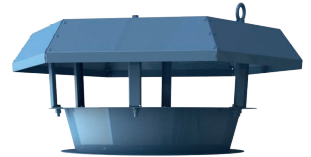
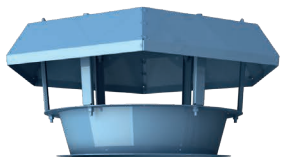
■ **Komplettlösungen für Axialventilatoren**



■ **Montagebeispiel der Axialventilatoren auf Dachflächen**

Überdrucksystem

Rauchabzugssystem

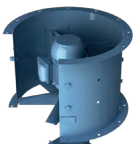


Z-VO Haube



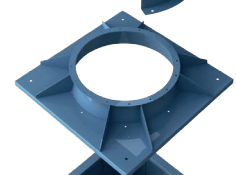
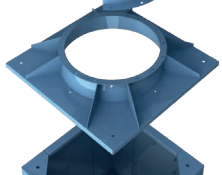
KOM1-VO Rückschlagklappe

KOM-VO...400/2 Rückschlagklappe

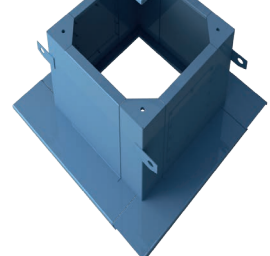
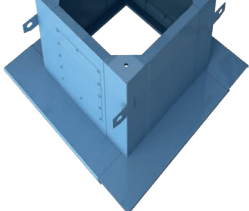


VPVO Axialventilator

VDO Entrauchungsventilator

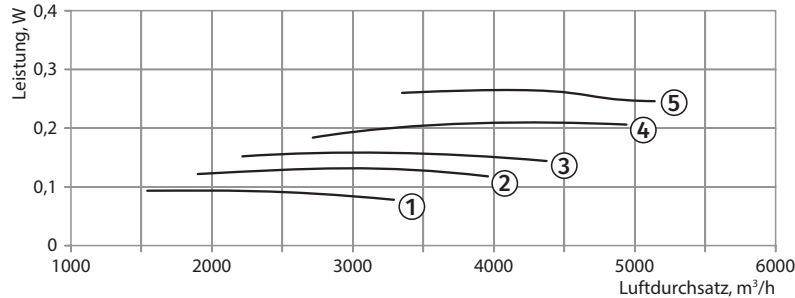
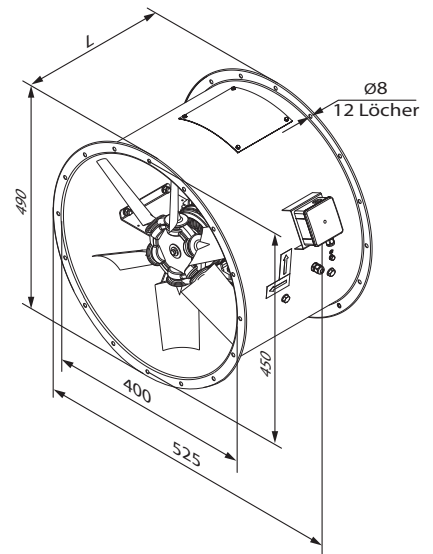
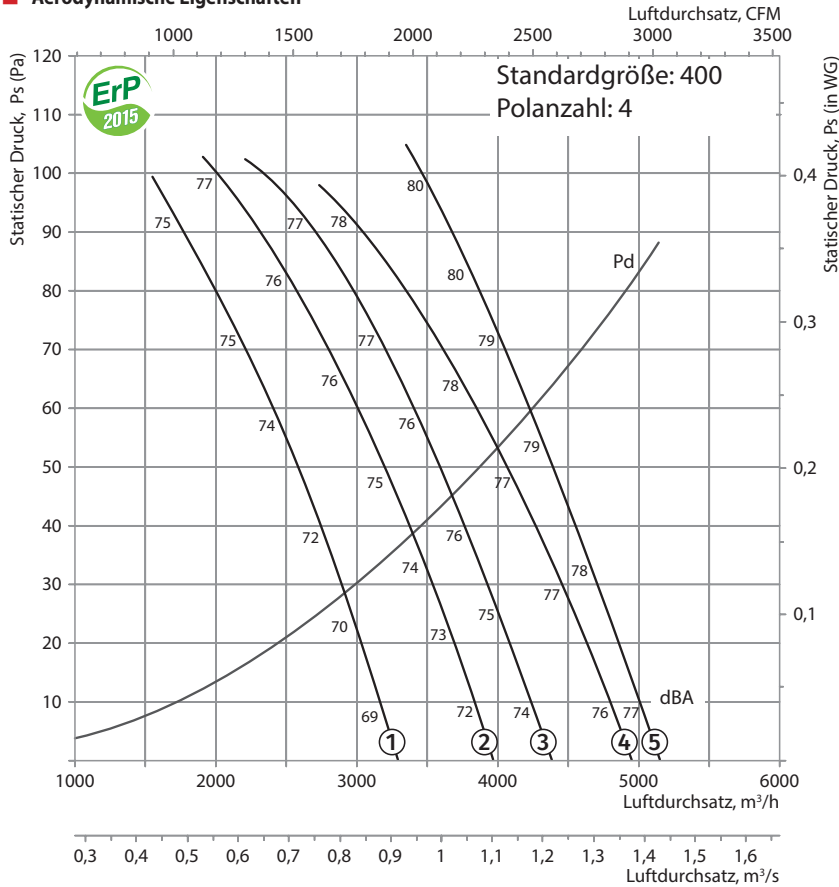


PK-VO Dachadapter



SM-VO Montagekasten

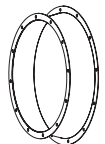
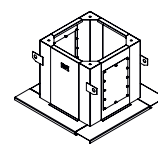
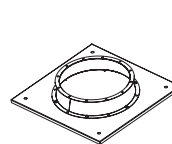
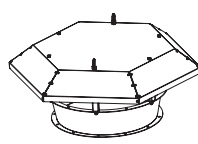
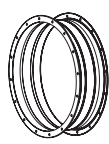
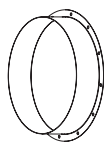
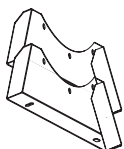
Aerodynamische Eigenschaften



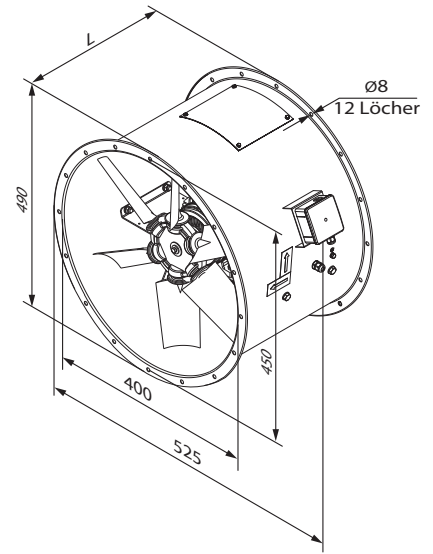
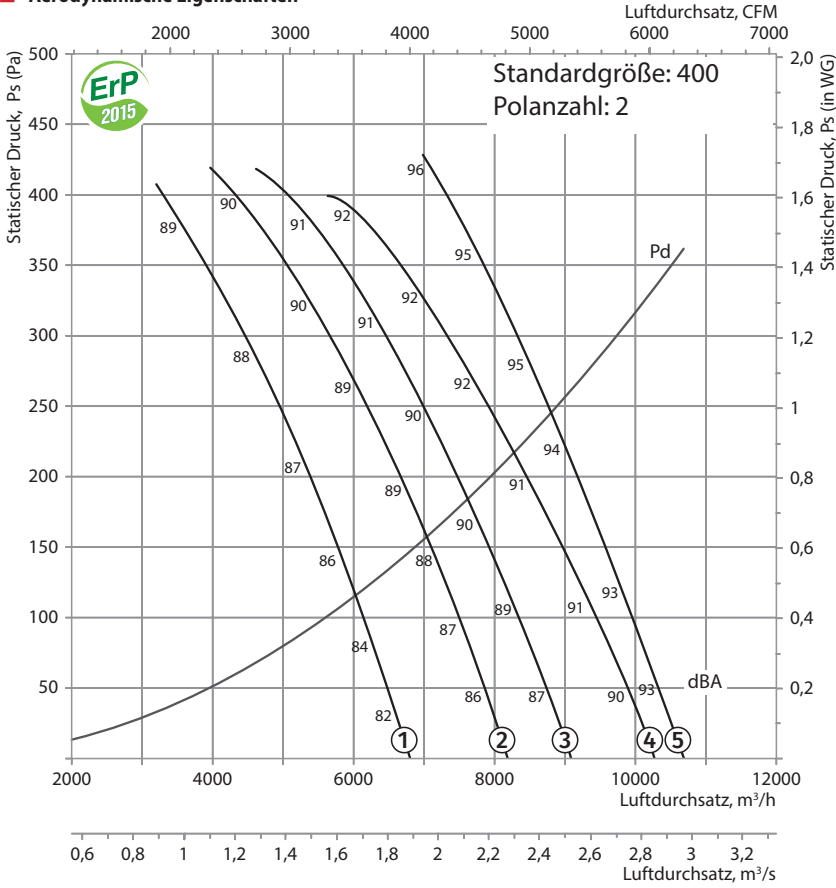
Technische Daten

| Standardgröße | Polanzahl des Motors | Spannung, V/50 Hz | Modell | Installierte Motorleistung Ny, kW | Drehzahl, min ⁻¹ | Anzahl der Laufradschaufeln | Schaufelwinkel, ° | Gewicht, kg | Länge L, mm | Nummer der Kurve auf der Grafik |
|---------------|----------------------|-------------------|-------------------------|-----------------------------------|-----------------------------|-----------------------------|-------------------|-------------|-------------|---------------------------------|
| 400 | 4 | 3~400 | VDO-400-4D/0,55-6/30/AL | 0,55 | 1440 | 6 | 30 | 26,5 | 400 | ① |
| | | | VDO-400-4D/0,55-6/35/AL | 0,55 | 1440 | 6 | 35 | 26,5 | 400 | ② |
| | | | VDO-400-4D/0,55-6/40/AL | 0,55 | 1440 | 6 | 40 | 26,5 | 400 | ③ |
| | | | VDO-400-4D/0,55-6/45/AL | 0,55 | 1440 | 6 | 45 | 26,5 | 400 | ④ |
| | | | VDO-400-4D/0,55-8/45/AL | 0,55 | 1440 | 8 | 45 | 27 | 400 | ⑤ |

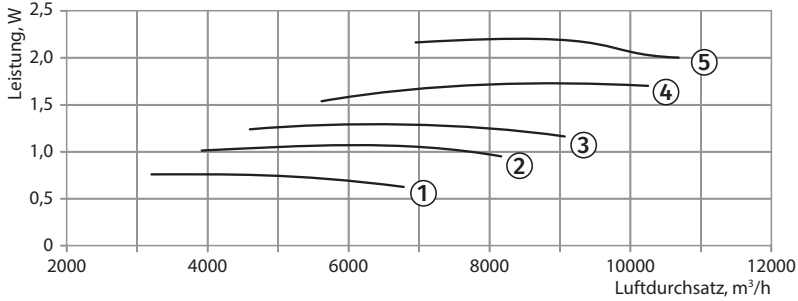
Zubehör



Aerodynamische Eigenschaften



VDO-400-2

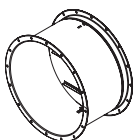


Technische Daten

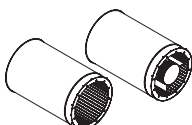
| Standardgröße | Polanzahl des Motors | Spannung, V/50 Hz | Modell | Installierte Motorleistung Ny, kW | Drehzahl, min ⁻¹ | Anzahl der Laufrad-schaufeln | Schaufelwinkel, ° | Gewicht, kg | Länge L, mm | Nummer der Kurve auf der Grafik |
|---------------|----------------------|-------------------|-------------------------------|-----------------------------------|-----------------------------|------------------------------|-------------------|-------------|-------------|---------------------------------|
| 400 | 2 | 3~400 | VDO-400-2D/0,75-6/30/AL | 0,75 | 2880 | 6 | 30 | 26,5 | 400 | ① |
| | | | VDO-400-2D/1,1-6/35/AL | 1,1 | 2880 | 6 | 35 | 27,5 | 400 | ② |
| | | | VDO-400-2D/1,5-6/40/AL | 1,5 | 2880 | 6 | 40 | 32,5 | 400 | ③ |
| | | | VDO-400-2D/2,2-6/45/AL | 2,2 | 2880 | 6 | 45 | 34,5 | 400 | ④ |
| | | | VDO-400-2D/2,2-8/45/AL | 2,2 | 2880 | 8 | 45 | 35 | 400 | ⑤ |
| 400 | 2/4 | 3~400 | VDO-400-2/4D/0,8/0,2-6/30/AL | 0,8/0,2 | 2880/1440 | 6 | 30 | 26,5 | 400 | ①* |
| | | | VDO-400-2/4D/1,1/0,25-6/35/AL | 1,1/0,25 | 2880/1440 | 6 | 35 | 27,5 | 400 | ②* |
| | | | VDO-400-2/4D/1,5/0,37-6/40/AL | 1,5/0,37 | 2880/1440 | 6 | 40 | 32,5 | 400 | ③* |
| | | | VDO-400-2/4D/2,2/0,5-6/45/AL | 2,2/0,5 | 2880/1440 | 6 | 45 | 34,5 | 400 | ④* |
| | | | VDO-400-2/4D/2,2/0,5-8/45/AL | 2,2/0,5 | 2880/1440 | 8 | 45 | 35 | 400 | ⑤* |

*Höchstgeschwindigkeitsdiagramm

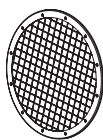
Zubehör



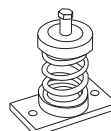
KOM-VO..400/2 Rückschlagklappe



SR SRV Schalldämpfer

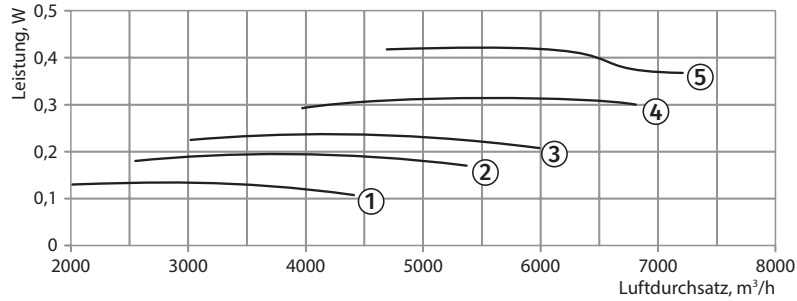
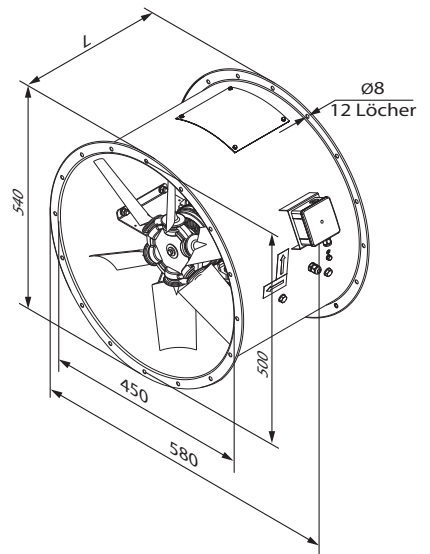
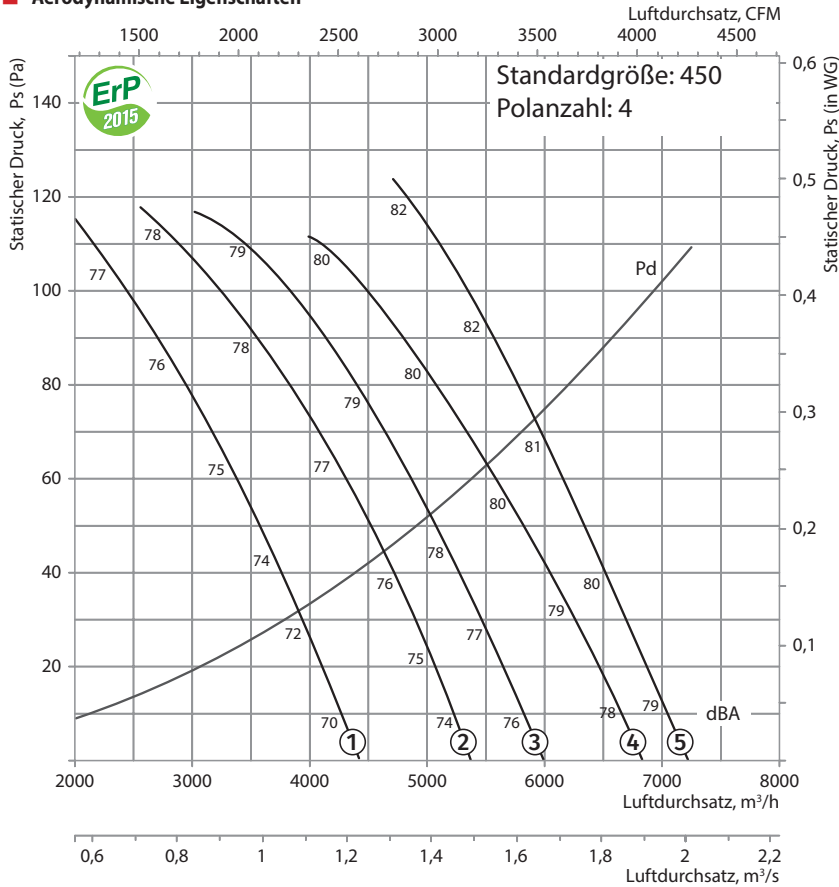


SZ-VO Schutzgitter



VVcp Vibrationsabsorbierendes Verbindungsstück

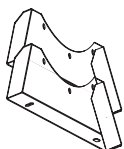
Aerodynamische Eigenschaften



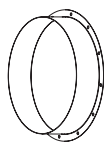
Technische Daten

| Standardgröße | Polanzahl des Motors | Spannung, V/50 Hz | Modell | Installierte Motorleistung Ny, kW | Drehzahl, min ⁻¹ | Anzahl der Laufradschaufeln | Schaufelwinkel, ° | Gewicht, kg | Länge L, mm | Nummer der Kurve auf der Grafik |
|---------------|----------------------|-------------------|-------------------------|-----------------------------------|-----------------------------|-----------------------------|-------------------|-------------|-------------|---------------------------------|
| 450 | 4 | 3~400 | VDO-450-4D/0,55-6/30/AL | 0,55 | 1440 | 6 | 30 | 36,1 | 400 | ① |
| | | | VDO-450-4D/0,55-6/35/AL | 0,55 | 1440 | 6 | 35 | 36,1 | 400 | ② |
| | | | VDO-450-4D/0,55-6/40/AL | 0,55 | 1440 | 6 | 40 | 36,1 | 400 | ③ |
| | | | VDO-450-4D/0,55-6/45/AL | 0,55 | 1440 | 6 | 45 | 36,1 | 400 | ④ |
| | | | VDO-450-4D/0,55-8/45/AL | 0,55 | 1440 | 8 | 45 | 36,6 | 400 | ⑤ |

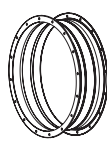
Zubehör



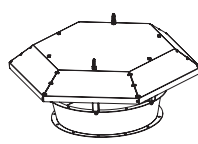
O-VO Halterung



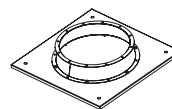
F-VO Flansche



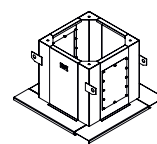
VVGf-VO...400/2 Flexibler Einsatz



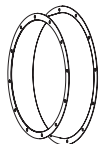
Z-VO Haube



PK-VO Dachadapter

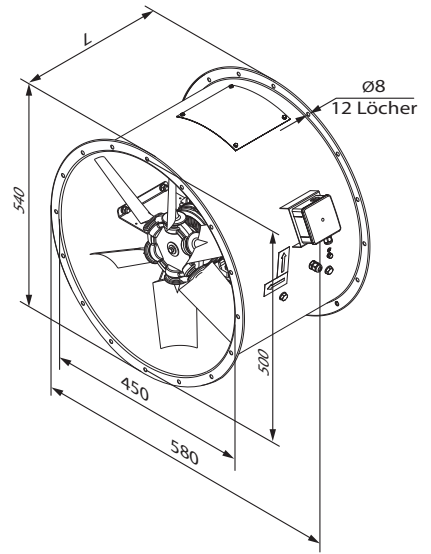
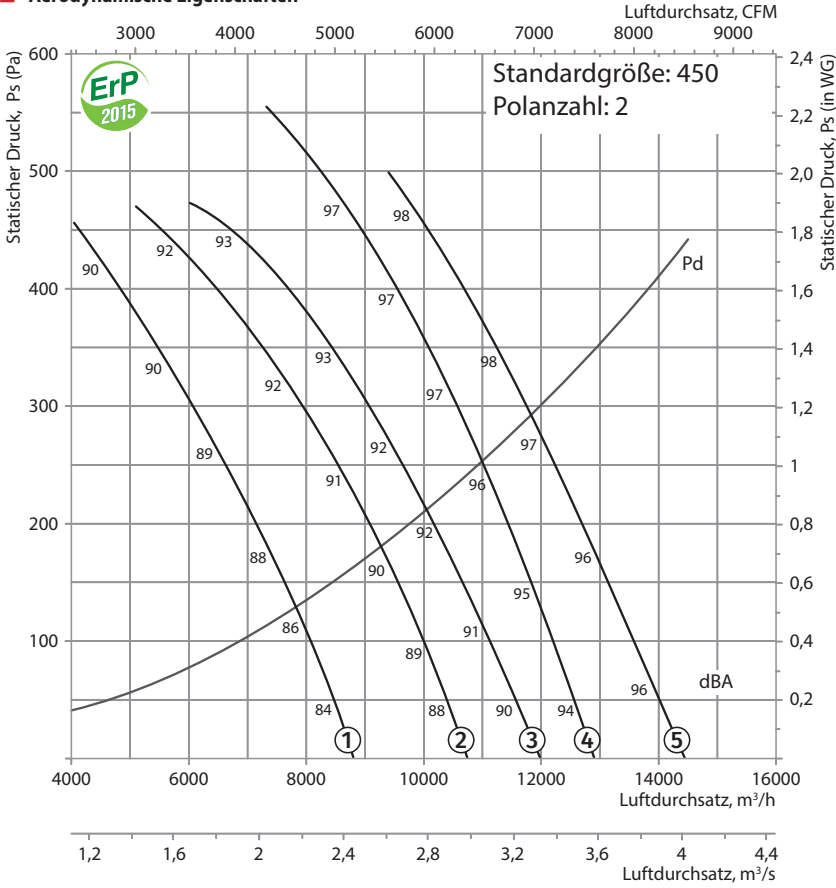


SM-VO Montagekasten

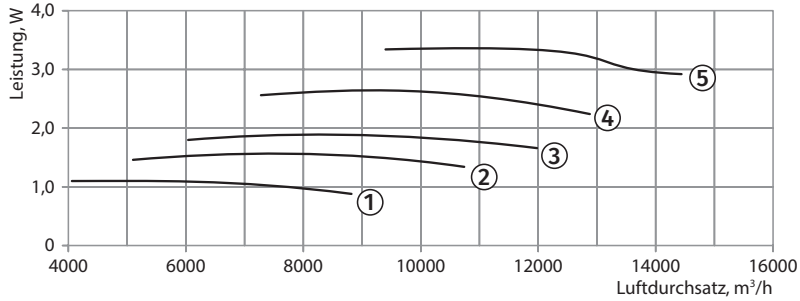


VK-VO Einstromdüse

Aerodynamische Eigenschaften



VDO-450-2

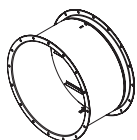


Technische Daten

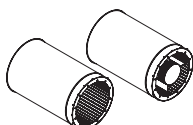
| Standardgröße | Polanzahl des Motors | Spannung, V/50 Hz | Modell | Installierte Motorleistung Ny, kW | Drehzahl, min ⁻¹ | Anzahl der Laufradschaufeln | Schaufelwinkel, ° | Gewicht, kg | Länge L, mm | Nummer der Kurve auf der Grafik |
|---------------|----------------------|-------------------|-------------------------------|-----------------------------------|-----------------------------|-----------------------------|-------------------|-------------|-------------|---------------------------------|
| 450 | 2 | 3~400 | VDO-450-2D/1,1-6/30/AL | 1,1 | 2880 | 6 | 30 | 37,1 | 400 | ① |
| | | | VDO-450-2D/1,5-6/35/AL | 1,5 | 2880 | 6 | 35 | 42,1 | 400 | ② |
| | | | VDO-450-2D/2,2-6/40/AL | 2,2 | 2880 | 6 | 40 | 44,1 | 400 | ③ |
| | | | VDO-450-2D/3-8/40/AL | 3 | 2880 | 8 | 40 | 53,6 | 500 | ④ |
| | | | VDO-450-2D/4-8/45/AL | 4 | 2880 | 8 | 45 | 64,6 | 500 | ⑤ |
| 450 | 2/4 | 3~400 | VDO-450-2/4D/1,1/0,25-6/30/AL | 1,1/0,25 | 2880/1440 | 6 | 30 | 37,1 | 400 | ①* |
| | | | VDO-450-2/4D/1,5/0,37-6/35/AL | 1,5/0,37 | 2880/1440 | 6 | 35 | 42,1 | 400 | ②* |
| | | | VDO-450-2/4D/2,2/0,5-6/40/AL | 2,2/0,5 | 2880/1440 | 6 | 40 | 44,1 | 400 | ③* |
| | | | VDO-450-2/4D/3,1/0,8-8/40/AL | 3,1/0,8 | 2880/1440 | 8 | 40 | 55,6 | 500 | ④* |
| | | | VDO-450-2/4D/4,4/1,1-8/45/AL | 4,4/1,1 | 2880/1440 | 8 | 45 | 65,6 | 500 | ⑤* |

*Höchstgeschwindigkeitsdiagramm

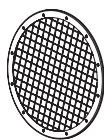
Zubehör



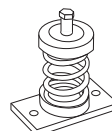
KOM-VO..400/2
Rückschlagklappe



SR SRV
Schalldämpfer

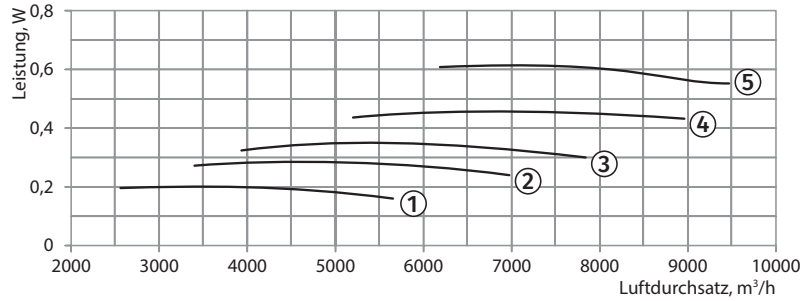
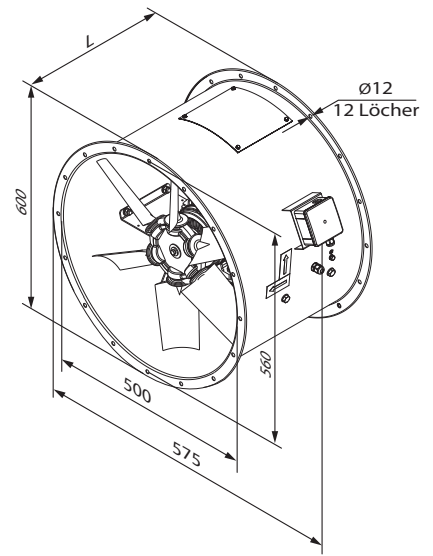
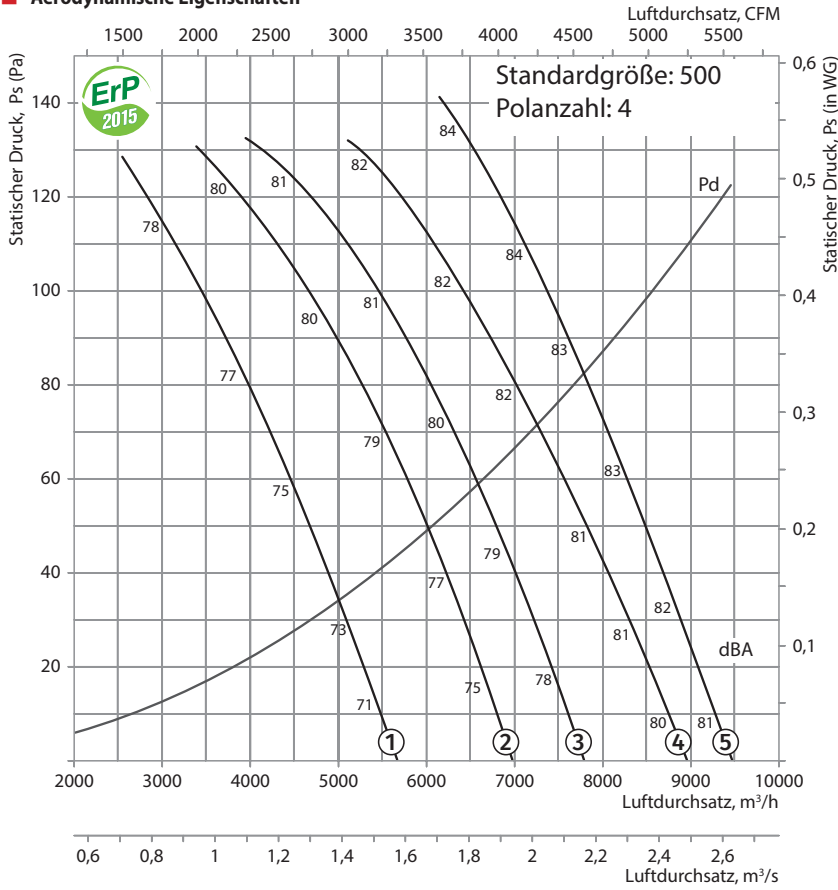


SZ-VO
Schutzgitter



VVcp
Vibrationsabsorbierendes Verbindungsstück

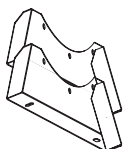
Aerodynamische Eigenschaften



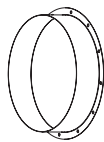
Technische Daten

| Standardgröße | Polanzahl des Motors | Spannung, V/50 Hz | Modell | Installierte Motorleistung Ny, kW | Drehzahl, min ⁻¹ | Anzahl der Laufradschaufeln | Schaufelwinkel, ° | Gewicht, kg | Länge L, mm | Nummer der Kurve auf der Grafik |
|---------------|----------------------|-------------------|-------------------------|-----------------------------------|-----------------------------|-----------------------------|-------------------|-------------|-------------|---------------------------------|
| 500 | 4 | 3~400 | VDO-500-4D/0,55-6/30/AL | 0,55 | 1440 | 6 | 30 | 47,7 | 400 | ① |
| | | | VDO-500-4D/0,55-6/35/AL | 0,55 | 1440 | 6 | 35 | 47,7 | 400 | ② |
| | | | VDO-500-4D/0,55-6/40/AL | 0,55 | 1440 | 6 | 40 | 47,7 | 400 | ③ |
| | | | VDO-500-4D/0,55-6/45/AL | 0,55 | 1440 | 6 | 45 | 47,7 | 400 | ④ |
| | | | VDO-500-4D/0,75-8/45/AL | 0,75 | 1440 | 8 | 45 | 49,3 | 400 | ⑤ |

Zubehör



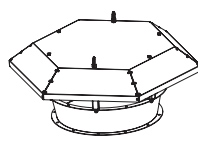
O-VO Halterung



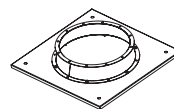
F-VO Flansche



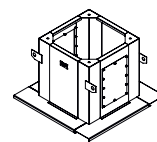
VVGf-VO...400/2 Flexibler Einsatz



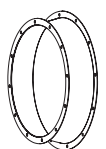
Z-VO Haube



PK-VO Dachadapter

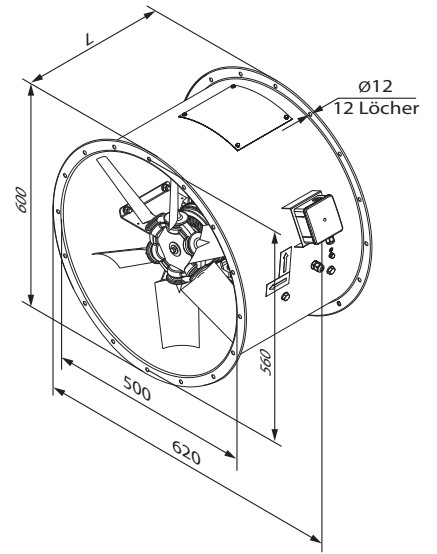
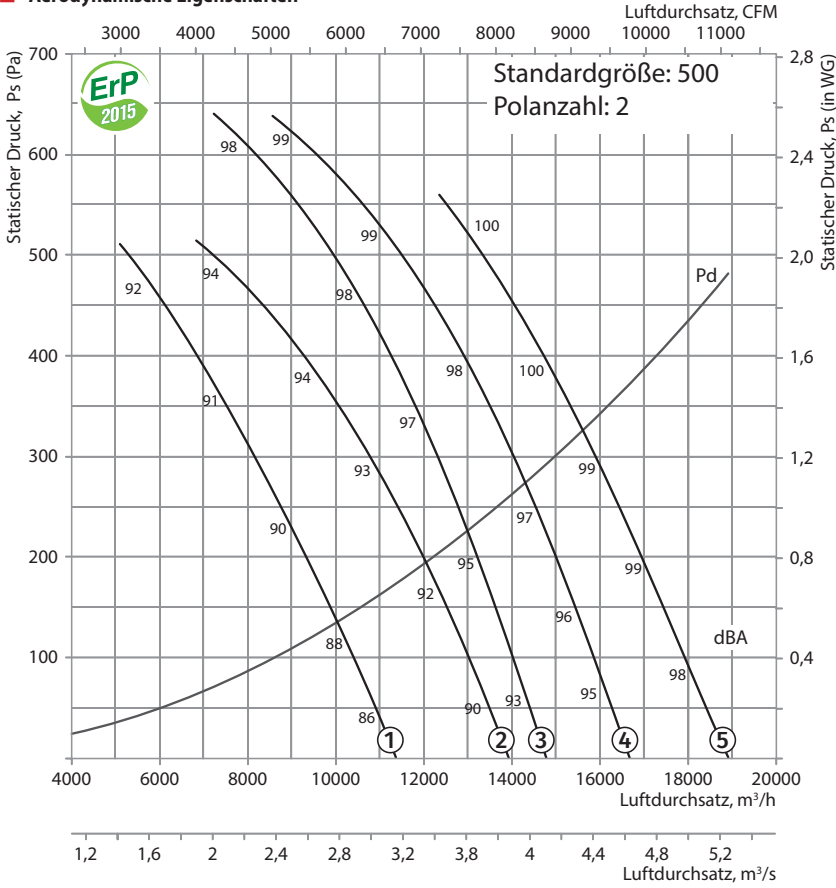


SM-VO Montagekasten

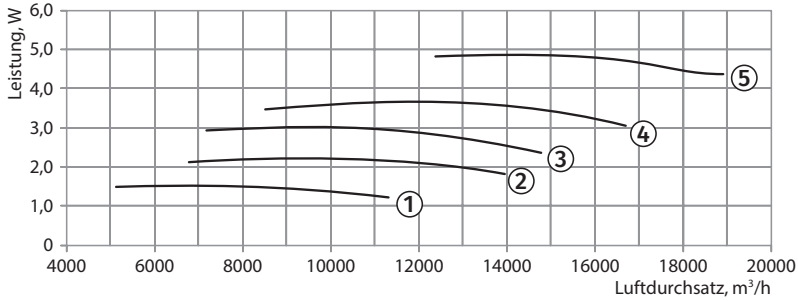


VK-VO Einströmdüse

Aerodynamische Eigenschaften



VDO-500-2

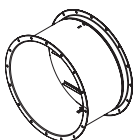


Technische Daten

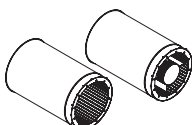
| Standardgröße | Polanzahl des Motors | Spannung, V/50 Hz | Modell | Installierte Motorleistung Ny, kW | Drehzahl, min ⁻¹ | Anzahl der Laufradschaufeln | Schaufelwinkel, ° | Gewicht, kg | Länge L, mm | Nummer der Kurve auf der Grafik |
|---------------|----------------------|-------------------|-------------------------------|-----------------------------------|-----------------------------|-----------------------------|-------------------|-------------|-------------|---------------------------------|
| 500 | 2 | 3~400 | VDO-500-2D/1,5-6/30/AL | 1,5 | 2880 | 6 | 30 | 53,7 | 400 | ① |
| | | | VDO-500-2D/2,2-6/35/AL | 2,2 | 2880 | 6 | 35 | 55,7 | 400 | ② |
| | | | VDO-500-2D/3-8/35/AL | 3 | 2880 | 8 | 35 | 65,3 | 400 | ③ |
| | | | VDO-500-2D/4-8/40/AL | 4 | 2880 | 8 | 40 | 76,3 | 500 | ④ |
| | | | VDO-500-2D/5,5-8/45/AL | 5,5 | 2880 | 8 | 45 | 95,3 | 500 | ⑤ |
| 500 | 2/4 | 3~400 | VDO-500-2/4D/1,5/0,37-6/30/AL | 1,5/0,37 | 2880/1440 | 6 | 30 | 53,7 | 400 | ①* |
| | | | VDO-500-2/4D/2,2/0,5-6/35/AL | 2,2/0,5 | 2880/1440 | 6 | 35 | 55,7 | 400 | ②* |
| | | | VDO-500-2/4D/3,1/0,8-8/35/AL | 3,1/0,8 | 2880/1440 | 6 | 40 | 67,3 | 500 | ③* |
| | | | VDO-500-2/4D/4,4/1,1-8/40/AL | 4,4/1,1 | 2880/1440 | 8 | 40 | 77,3 | 500 | ④* |
| | | | VDO-500-2/4D/6,0/1,5-8/45/AL | 6/1,5 | 2880/1440 | 8 | 45 | 92,3 | 550 | ⑤* |

*Höchstgeschwindigkeitsdiagramm

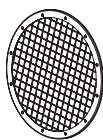
Zubehör



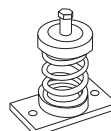
KOM-VO...400/2 Rückschlagklappe



SR SRV Schalldämpfer

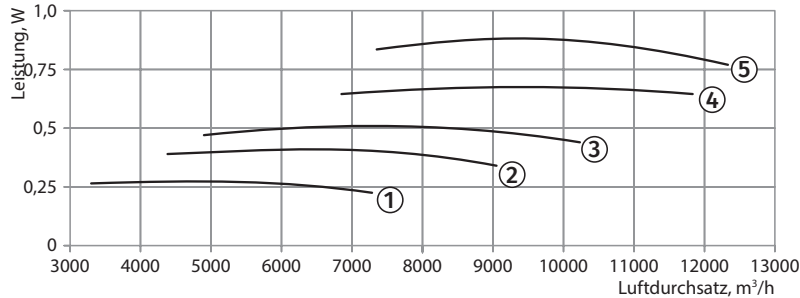
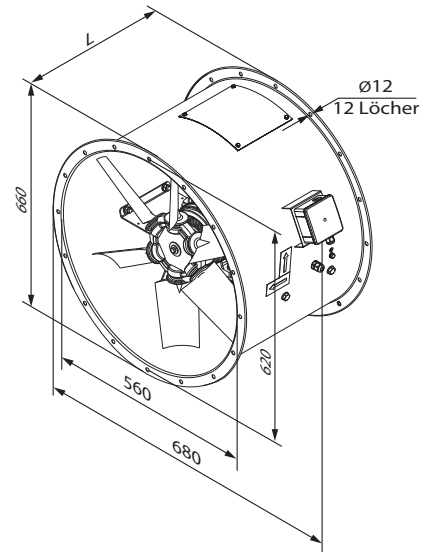
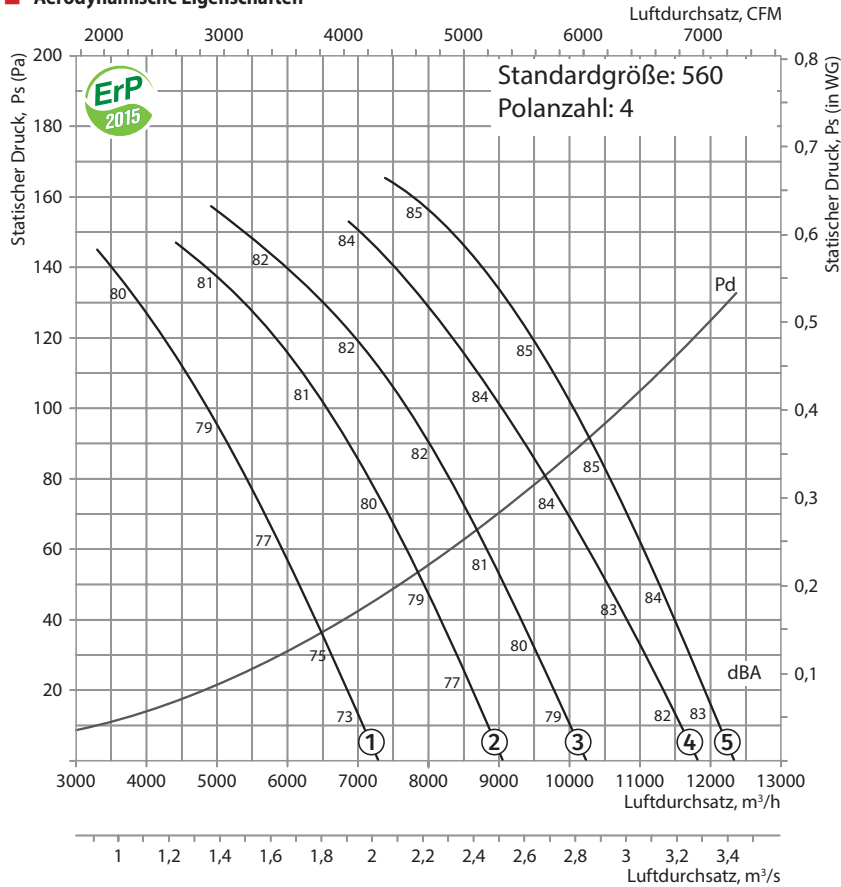


SZ-VO Schutzgitter



VVcP Vibrationsabsorbierendes Verbindungsstück

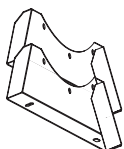
Aerodynamische Eigenschaften



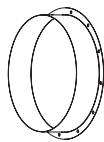
Technische Daten

| Standardgröße | Polanzahl des Motors | Spannung, V/50 Hz | Modell | Installierte Motorleistung Ny, kW | Drehzahl, min ⁻¹ | Anzahl der Laufradschaufeln | Schaufelwinkel, ° | Gewicht, kg | Länge L, mm | Numer der Kurve auf der Grafik |
|---------------|----------------------|-------------------|-------------------------|-----------------------------------|-----------------------------|-----------------------------|-------------------|-------------|-------------|--------------------------------|
| 560 | 4 | 3~400 | VDO-560-4D/0,55-6/30/AL | 0,55 | 1440 | 6 | 30 | 64,8 | 400 | ① |
| | | | VDO-560-4D/0,55-6/35/AL | 0,55 | 1440 | 6 | 35 | 64,8 | 400 | ② |
| | | | VDO-560-4D/0,55-6/40/AL | 0,55 | 1440 | 6 | 40 | 64,8 | 400 | ③ |
| | | | VDO-560-4D/0,75-6/45/AL | 0,75 | 1440 | 6 | 45 | 65,8 | 400 | ④ |
| | | | VDO-560-4D/1,1-8/45/AL | 1,1 | 1440 | 8 | 45 | 72,4 | 400 | ⑤ |

Zubehör



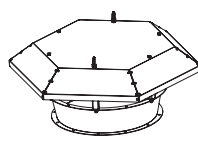
O-VO Halterung



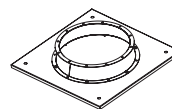
F-VO Flansche



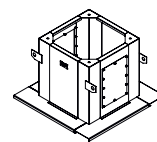
VVGf-VO...400/2 Flexibler Einsatz



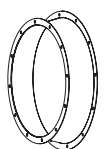
Z-VO Haube



PK-VO Dachadapter

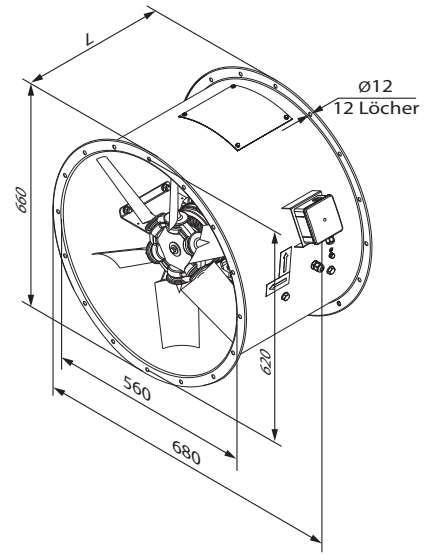
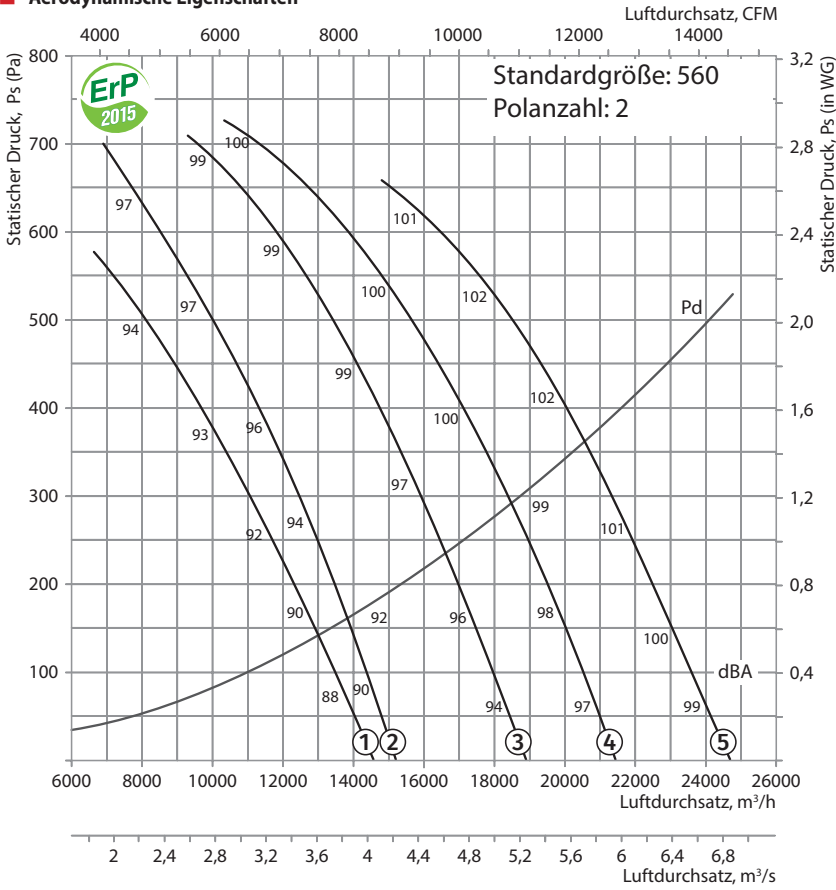


SM-VO Montagekasten

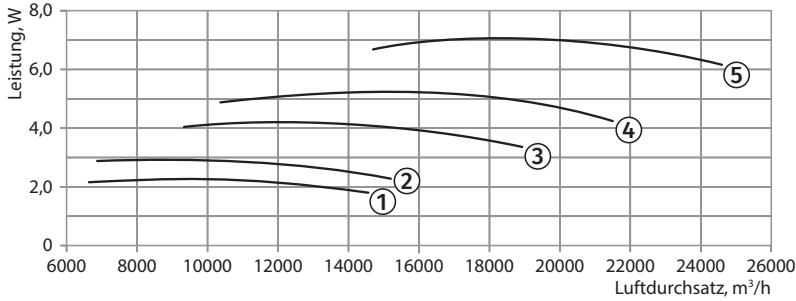


VK-VO Einströmdüse

Aerodynamische Eigenschaften



VDO-560-2

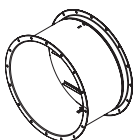


Technische Daten

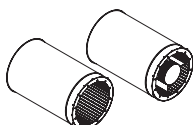
| Standardgröße | Polanzahl des Motors | Spannung, V/50 Hz | Modell | Installierte Motorleistung Ny, kW | Drehzahl, min ⁻¹ | Anzahl der Laufradschaufeln | Schaufelwinkel, ° | Gewicht, kg | Länge L, mm | Nummer der Kurve auf der Grafik |
|---------------|----------------------|-------------------|------------------------------|-----------------------------------|-----------------------------|-----------------------------|-------------------|-------------|-------------|---------------------------------|
| 560 | 2 | 3~400 | VDO-560-2D/2,2-6/30/AL | 2,2 | 2880 | 6 | 30 | 72,8 | 400 | ① |
| | | | VDO-560-2D/3-8/30/AL | 3 | 2880 | 8 | 30 | 82,4 | 400 | ② |
| | | | VDO-560-2D/4-8/35/AL | 4 | 2880 | 8 | 35 | 93,4 | 500 | ③ |
| | | | VDO-560-2D/5,5-8/40/AL | 5,5 | 2880 | 8 | 40 | 112,4 | 500 | ④ |
| | | | VDO-560-2D/7,5-8/45/AL | 7,5 | 2880 | 8 | 45 | 118,4 | 500 | ⑤ |
| 560 | 2/4 | 3~400 | VDO-560-2/4D/2,2/0,5-6/30/AL | 2,2/0,5 | 2880/1440 | 6 | 30 | 72,8 | 400 | ①* |
| | | | VDO-560-2/4D/3,1/0,8-8/30/AL | 3,1/0,8 | 2880/1440 | 8 | 30 | 84,4 | 500 | ②* |
| | | | VDO-560-2/4D/4,4/1,1-8/35/AL | 4,4/1,1 | 2880/1440 | 8 | 35 | 94,4 | 500 | ③* |
| | | | VDO-560-2/4D/6/1,5-8/40/AL | 6/1,5 | 2880/1440 | 8 | 40 | 109,4 | 550 | ④* |
| | | | VDO-560-2/4D/8/2-8/45/AL | 8/2 | 2880/1440 | 8 | 45 | 118,4 | 550 | ⑤* |

*Höchstgeschwindigkeitsdiagramm

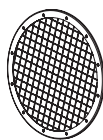
Zubehör



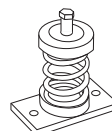
KOM-VO..400/2 Rückschlagklappe



SR SRV Schalldämpfer

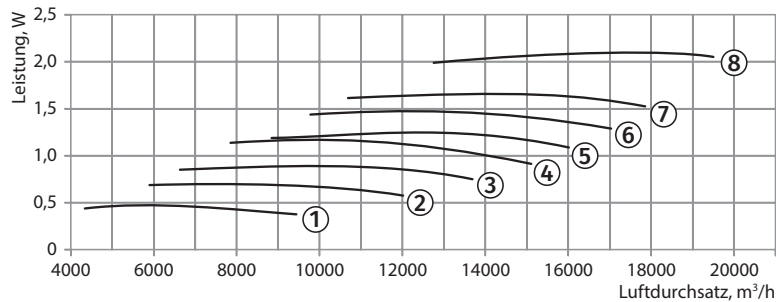
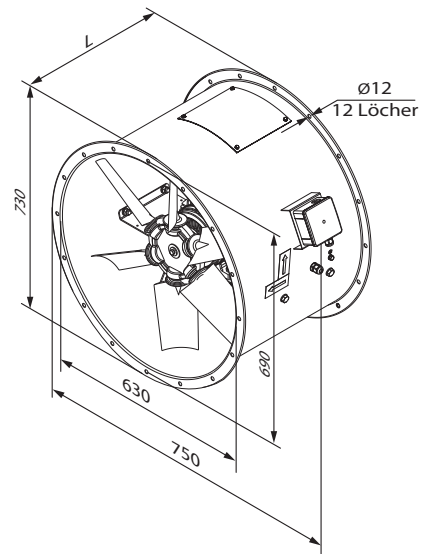
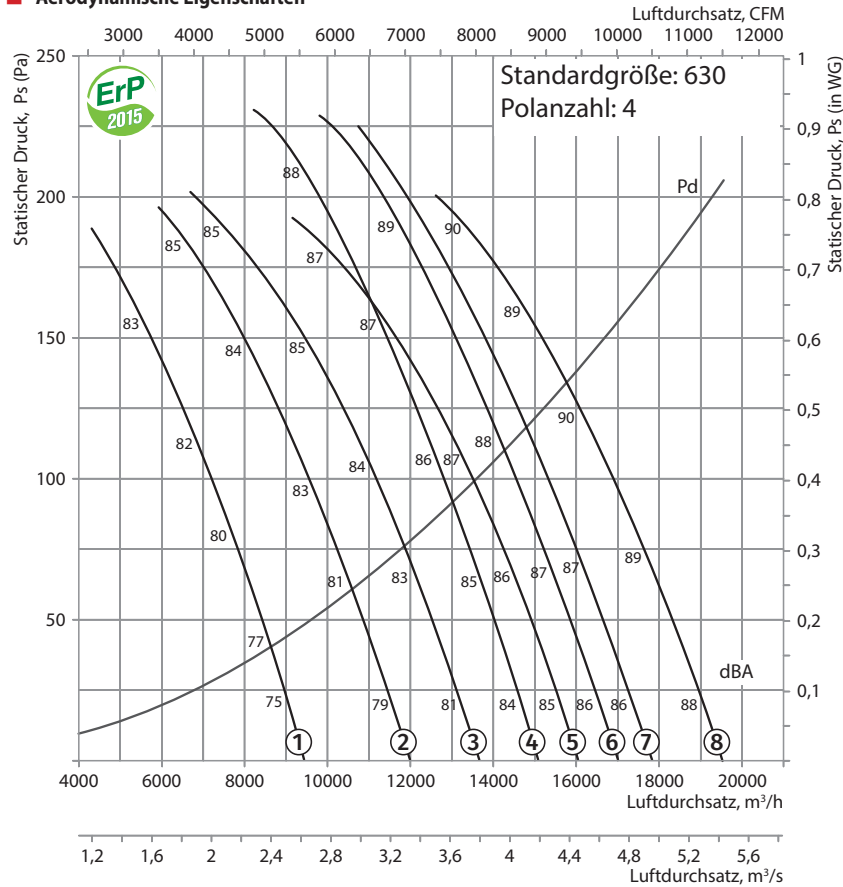


SZ-VO Schutzgitter



VVcp Vibrationsabsorbierendes Verbindungsstück

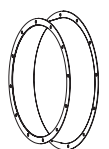
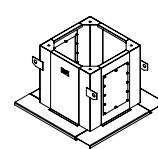
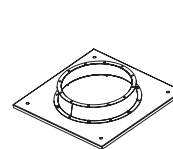
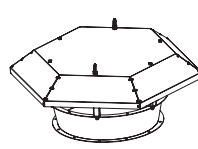
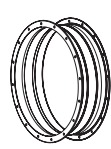
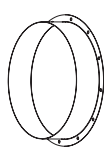
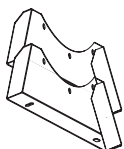
Aerodynamische Eigenschaften



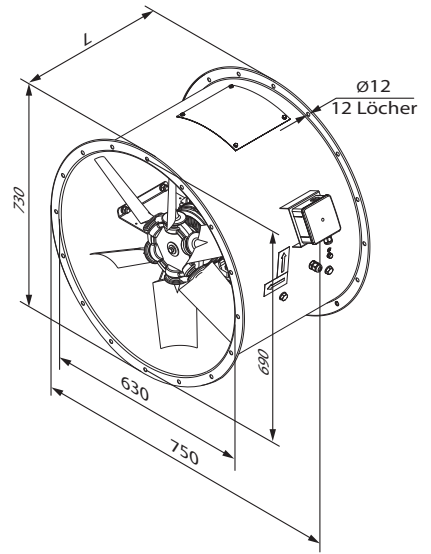
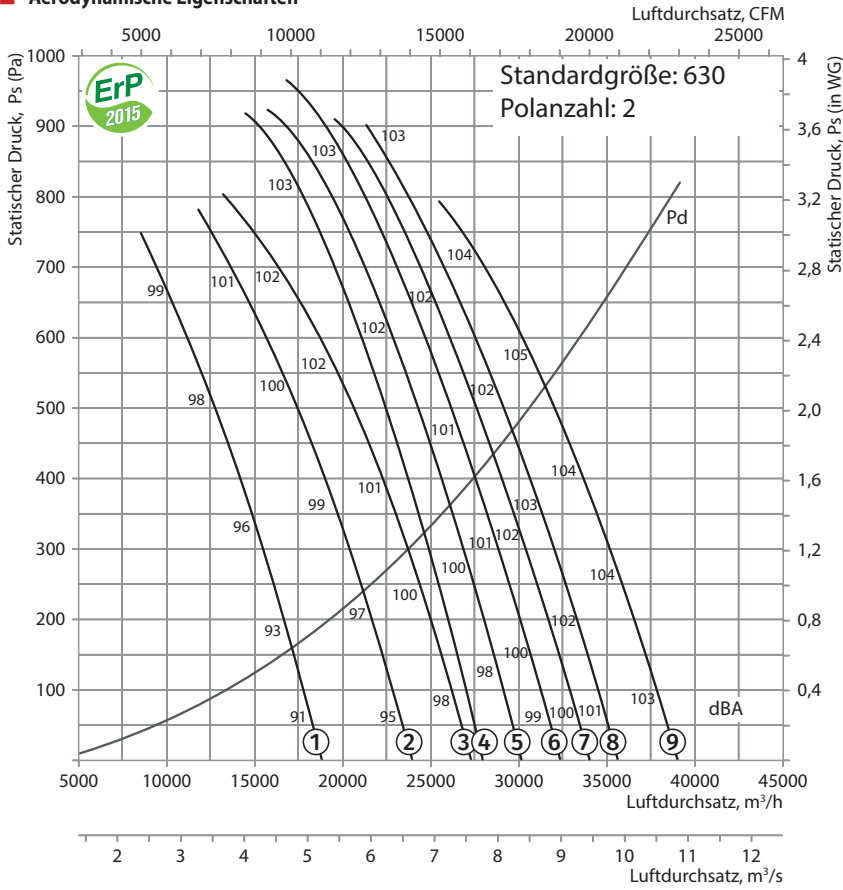
Technische Daten

| Standardgröße | Polanzahl des Motors | Spannung, V/50 Hz | Modell | Installierte Motorleistung Ny, kW | Drehzahl, min ⁻¹ | Anzahl der Laufradschaufeln | Schaufelwinkel, ° | Gewicht, kg | Länge L, mm | Nummer der Kurve auf der Grafik |
|---------------|----------------------|-------------------|--------------------------|-----------------------------------|-----------------------------|-----------------------------|-------------------|-------------|-------------|---------------------------------|
| 630 | 4 | 3~400 | VDO-630-4D/0,55-8/30/AL | 0,55 | 1440 | 8 | 30 | 71 | 400 | ① |
| | | | VDO-630-4D/0,75-8/35/AL | 0,75 | 1440 | 8 | 35 | 72 | 400 | ② |
| | | | VDO-630-4D/1,1-8/40/AL | 1,1 | 1440 | 8 | 40 | 78 | 400 | ③ |
| | | | VDO-630-4D/1,5-6/32,5/AL | 1,5 | 1440 | 6 | 32,5 | 82,1 | 400 | ④ |
| | | | VDO-630-4D/1,5-8/45/AL | 1,5 | 1440 | 8 | 45 | 81 | 400 | ⑤ |
| | | | VDO-630-4D/1,5-6/37,5/AL | 1,5 | 1440 | 6 | 37,5 | 82,1 | 400 | ⑥ |
| | | | VDO-630-4D/2,2-6/40/AL | 2,2 | 1440 | 6 | 40 | 88,1 | 400 | ⑦ |
| | | | VDO-630-4D/2,2-6/45/AL | 2,2 | 1440 | 6 | 45 | 88,1 | 400 | ⑧ |

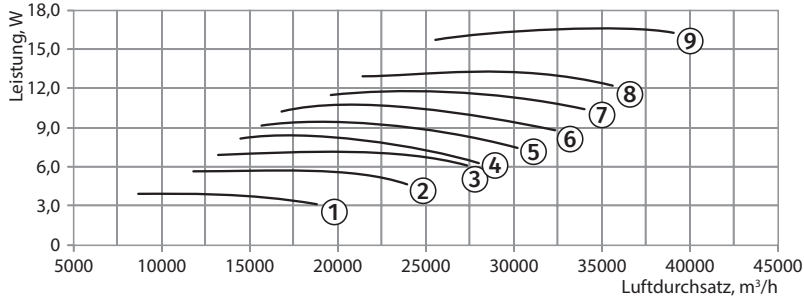
Zubehör



Aerodynamische Eigenschaften



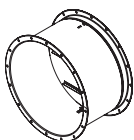
VDO-630-2



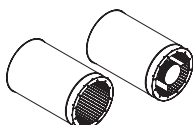
Technische Daten

| Standardgröße | Polanzahl des Motors | Spannung, V/50 Hz | Modell | Installierte Motorleistung Ny, kW | Drehzahl, min ⁻¹ | Anzahl der Laufradschaufeln | Schaufelwinkel, ° | Gewicht, kg | Länge L, mm | Nummer der Kurve auf der Grafik |
|---------------|----------------------|-------------------|-------------------------|-----------------------------------|-----------------------------|-----------------------------|-------------------|-------------|-------------|---------------------------------|
| 630 | 2 | 3~400 | VDO-630-2D/4-8/30/AL | 4 | 2880 | 8 | 30 | 99 | 500 | ① |
| | | | VDO-630-2D/5,5-8/35/AL | 5,5 | 2880 | 8 | 35 | 118 | 500 | ② |
| | | | VDO-630-2D/7,5-8/40/AL | 7,5 | 2880 | 8 | 40 | 124 | 500 | ③ |
| | | | VDO-630-2D/9,2-6/30/AL | 9,2 | 2880 | 6 | 30 | 143,1 | 600 | ④ |
| | | | VDO-630-2D/11-6/32,5/AL | 11 | 2880 | 6 | 32,5 | 162,1 | 600 | ⑤ |
| | | | VDO-630-2D/11-6/35/AL | 11 | 2880 | 6 | 35 | 162,1 | 600 | ⑥ |
| | | | VDO-630-2D/15-6/37,5/AL | 15 | 2880 | 6 | 37,5 | 169,1 | 700 | ⑦ |
| | | | VDO-630-2D/15-6/40/AL | 15 | 2880 | 6 | 40 | 169,1 | 700 | ⑧ |
| | | | VDO-630-2D/18,5-6/45/AL | 18,5 | 2880 | 6 | 45 | 184,1 | 700 | ⑨ |

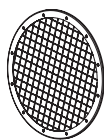
Zubehör



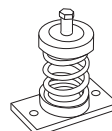
KOM-V0..400/2 Rückschlagklappe



SR SRV Schalldämpfer

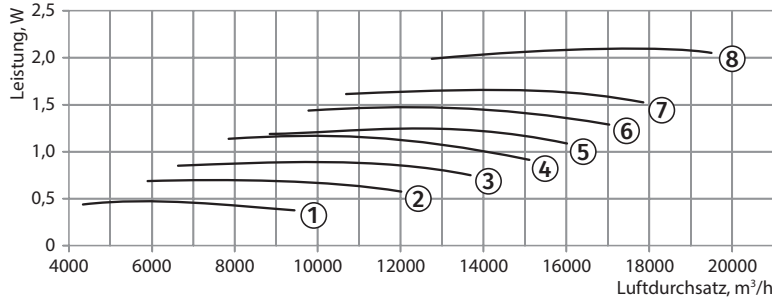
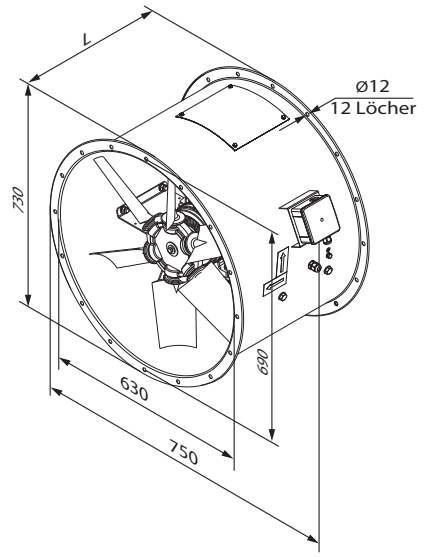
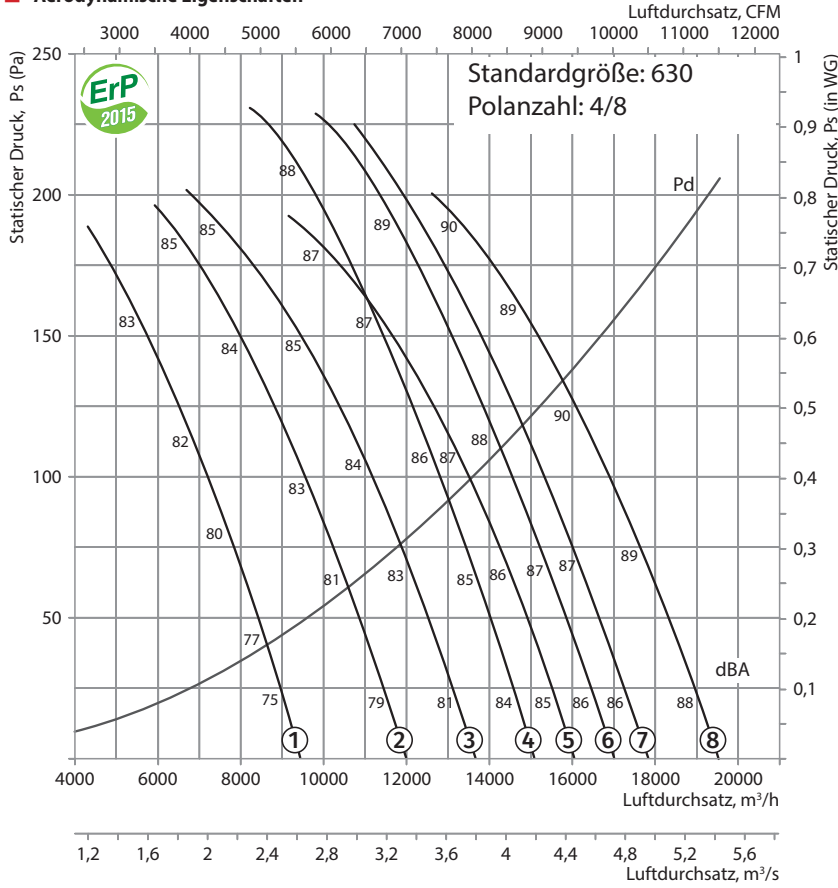


SZ-V0 Schutzgitter



VVcP Vibrationsabsorbierendes Verbindungsstück

Aerodynamische Eigenschaften

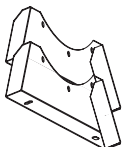


Technische Daten

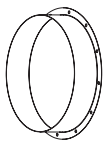
| Standardgröße | Polanzahl des Motors | Spannung, V/50 Hz | Modell | Installierte Motorleistung Ny, kW | Drehzahl, min ⁻¹ | Anzahl der Laufradschaufeln | Schaufelwinkel, ° | Gewicht, kg | Länge L, mm | Nummer der Kurve auf der Grafik |
|---------------|----------------------|-------------------|--------------------------------|-----------------------------------|-----------------------------|-----------------------------|-------------------|-------------|-------------|---------------------------------|
| 630 | 4/8 | 3~400 | VDO-630-4/8D/0,6/0,15-8/30/AL | 0,6/0,15 | 1440/720 | 8 | 30 | 72 | 400 | ①* |
| | | | VDO-630-4/8D/0,8/0,2-8/35/AL | 0,8/0,2 | 1440/720 | 8 | 35 | 72 | 400 | ②* |
| | | | VDO-630-4/8D/1,2/0,3-8/40/AL | 1,2/0,3 | 1440/720 | 8 | 40 | 77 | 400 | ③* |
| | | | VDO-630-4/8D/1,2/0,3-6/32,5/AL | 1,2/0,3 | 1440/720 | 6 | 32,5 | 78,1 | 400 | ④* |
| | | | VDO-630-4/8D/1,6/0,4-8/45/AL | 1,6/0,4 | 1440/720 | 8 | 45 | 80 | 400 | ⑤* |
| | | | VDO-630-4/8D/1,6/0,4-6/37,5/AL | 1,6/0,4 | 1440/720 | 6 | 37,5 | 81,1 | 400 | ⑥* |
| | | | VDO-630-4/8D/2,2/0,55-6/40/AL | 2,2/0,55 | 1440/720 | 6 | 40 | 88,1 | 500 | ⑦* |
| | | | VDO-630-4/8D/2,2/0,55-6/45/AL | 2,2/0,55 | 1440/720 | 6 | 45 | 88,1 | 500 | ⑧* |

*Höchstgeschwindigkeitsdiagramm

Zubehör



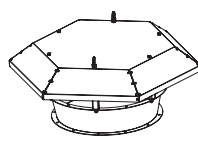
O-VO Halterung



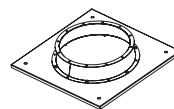
F-VO Flansche



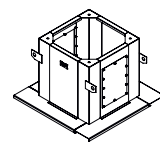
VVGf-VO...400/2 Flexibler Einsatz



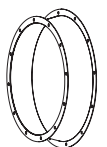
Z-VO Haube



PK-VO Dachadapter

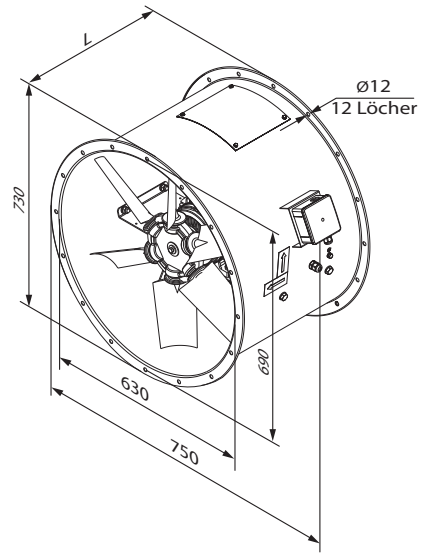
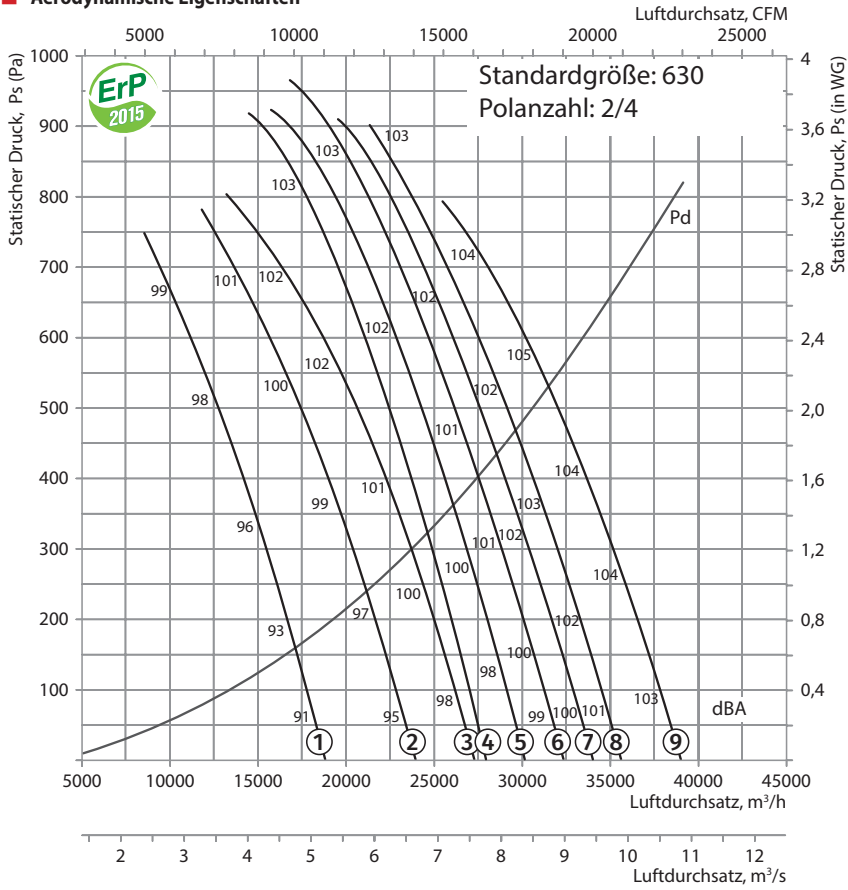


SM-VO Montagekasten

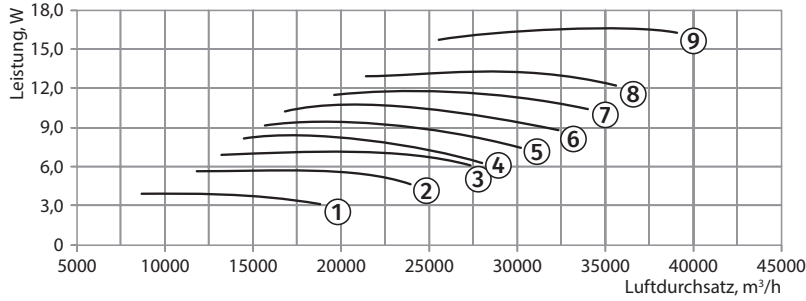


VK-VO Einströmdüse

Aerodynamische Eigenschaften



VDO-630-2/4

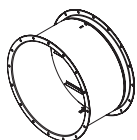


Technische Daten

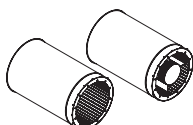
| Standardgröße | Polanzahl des Motors | Spannung, V/50 Hz | Modell | Installierte Motorleistung Ny, kW | Drehzahl, min ⁻¹ | Anzahl der Laufradschaufeln | Schaufelwinkel, ° | Gewicht, kg | Länge L, mm | Nummer der Kurve auf der Grafik |
|---------------|----------------------|-------------------|------------------------------|-----------------------------------|-----------------------------|-----------------------------|-------------------|-------------|-------------|---------------------------------|
| 630 | 2/4 | 3~400 | VDO-630-2/4D/4,4/1,1-8/30/AL | 4,4/1,1 | 2880/1440 | 8 | 30 | 100 | 500 | ①* |
| | | | VDO-630-2/4D/6/1,5-8/35/AL | 6/1,5 | 2880/1440 | 8 | 35 | 115 | 600 | ②* |
| | | | VDO-630-2/4D/8/2-8/40/AL | 8/2 | 2880/1440 | 8 | 40 | 124 | 600 | ③* |
| | | | VDO-630-2/4D/12/3-6/30/AL | 12/3 | 2880/1440 | 6 | 30 | 176,1 | 700 | ④* |
| | | | VDO-630-2/4D/12/3-6/32,5/AL | 12/3 | 2880/1440 | 6 | 32,5 | 176,1 | 700 | ⑤* |
| | | | VDO-630-2/4D/12/3-6/35/AL | 12/3 | 2880/1440 | 6 | 35 | 176,1 | 700 | ⑥* |
| | | | VDO-630-2/4D/12/3-6/37,5/AL | 12/3 | 2880/1440 | 6 | 37,5 | 176,1 | 700 | ⑦* |
| | | | VDO-630-2/4D/16/4-6/40/AL | 16/4 | 2880/1440 | 6 | 40 | 193,1 | 700 | ⑧* |
| | | | VDO-630-2/4D/20/5,5-6/45/AL | 20/5,5 | 2880/1440 | 6 | 45 | 218,1 | 700 | ⑨* |

*Höchstgeschwindigkeitsdiagramm

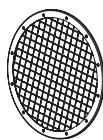
Zubehör



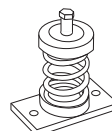
KOM-VO...400/2 Rückschlagklappe



SR SRV Schalldämpfer

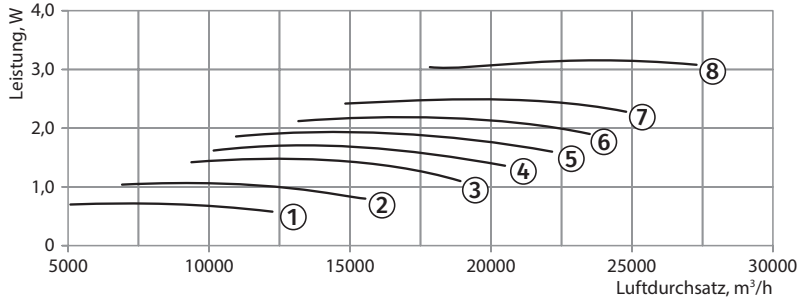
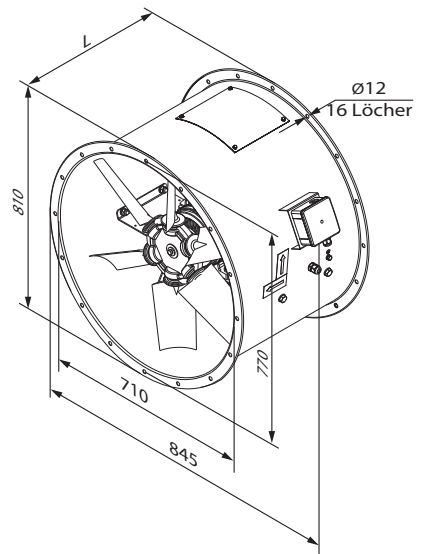
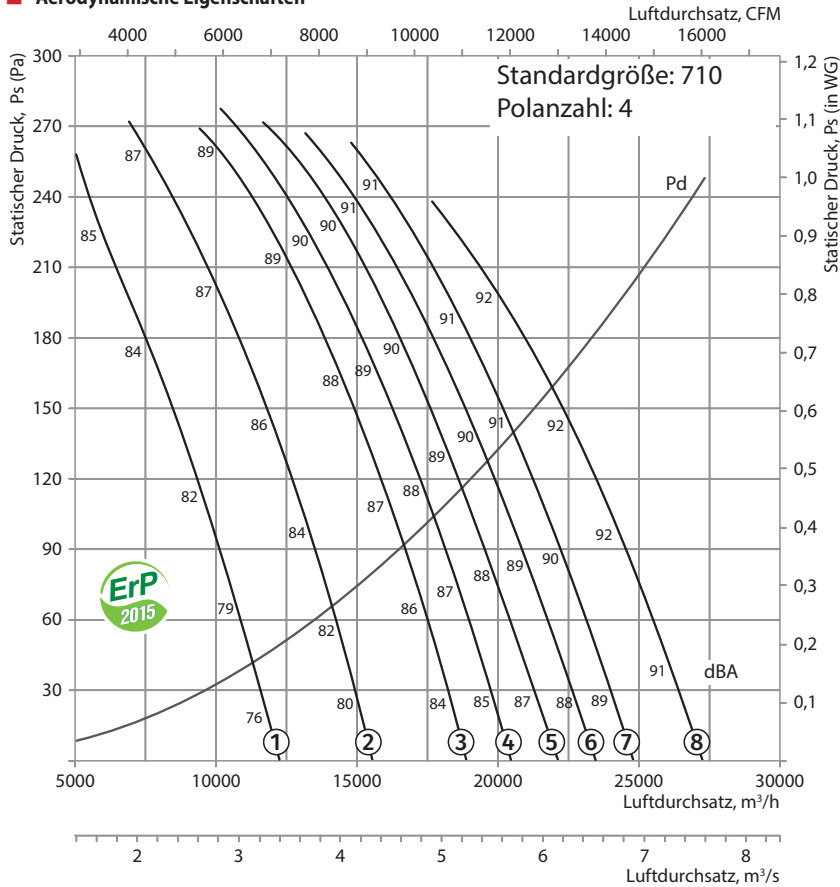


SZ-VO Schutzgitter



VVcp Vibrationsabsorbierendes Verbindungsstück

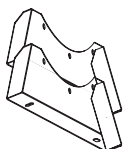
Aerodynamische Eigenschaften



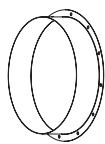
Technische Daten

| Standardgröße | Polanzahl des Motors | Spannung, V/50 Hz | Modell | Installierte Motorleistung Ny, kW | Drehzahl, min ⁻¹ | Anzahl der Laufradschaufeln | Schaufelwinkel, ° | Gewicht, kg | Länge L, mm | Nummer der Kurve auf der Grafik |
|---------------|----------------------|-------------------|--------------------------|-----------------------------------|-----------------------------|-----------------------------|-------------------|-------------|-------------|---------------------------------|
| 710 | 4 | 3~400 | VDO-710-4D/0,75-6/20/AL | 0,75 | 1440 | 6 | 20 | 99,3 | 450 | ① |
| | | | VDO-710-4D/1,1-6/25/AL | 1,1 | 1440 | 6 | 25 | 105,3 | 450 | ② |
| | | | VDO-710-4D/1,5-6/30/AL | 1,5 | 1440 | 6 | 30 | 108,3 | 450 | ③ |
| | | | VDO-710-4D/2,2-6/32,5/AL | 2,2 | 1440 | 6 | 32,5 | 114,3 | 450 | ④ |
| | | | VDO-710-4D/2,2-6/35/AL | 2,2 | 1440 | 6 | 35 | 114,3 | 450 | ⑤ |
| | | | VDO-710-4D/2,2-6/37,5/AL | 2,2 | 1440 | 6 | 37,5 | 114,3 | 450 | ⑥ |
| | | | VDO-710-4D/3-6/40/AL | 3 | 1440 | 6 | 40 | 117,3 | 560 | ⑦ |
| | | | VDO-710-4D/4-6/45/AL | 4 | 1440 | 6 | 45 | 131,3 | 560 | ⑧ |

Zubehör



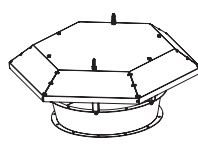
O-VO Halterung



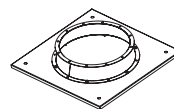
F-VO Flansche



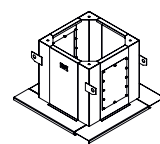
VVGf-VO...400/2 Flexibler Einsatz



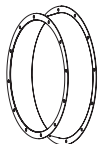
Z-VO Haube



PK-VO Dachadapter

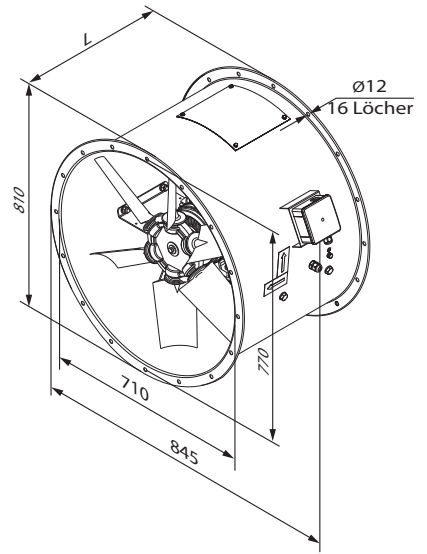
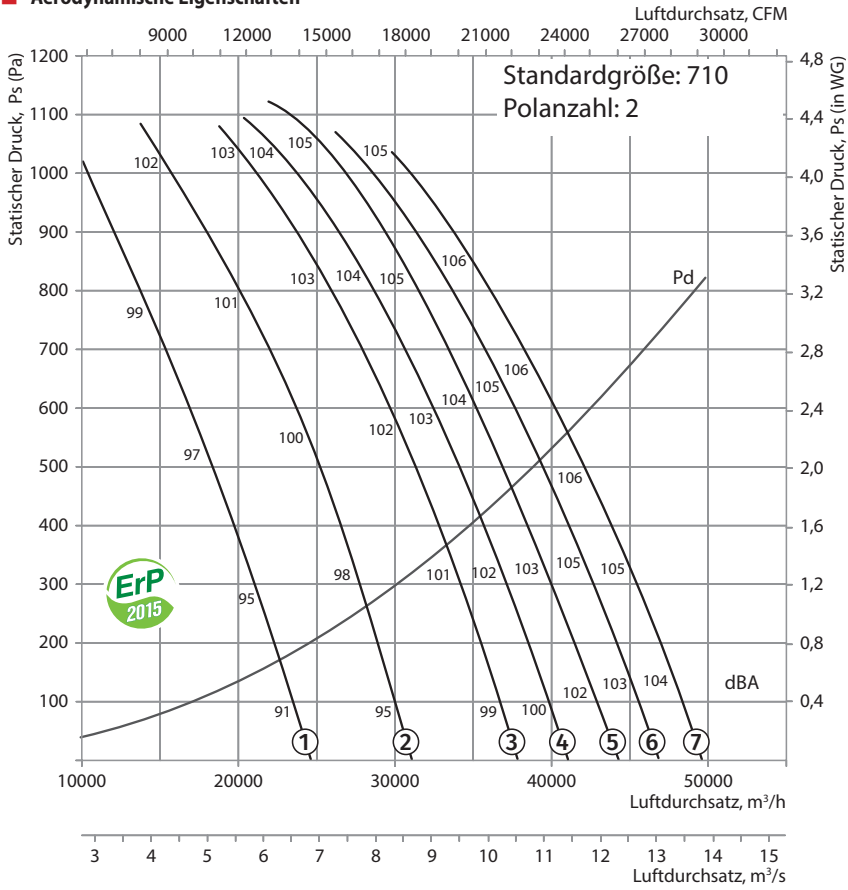


SM-VO Montagekasten

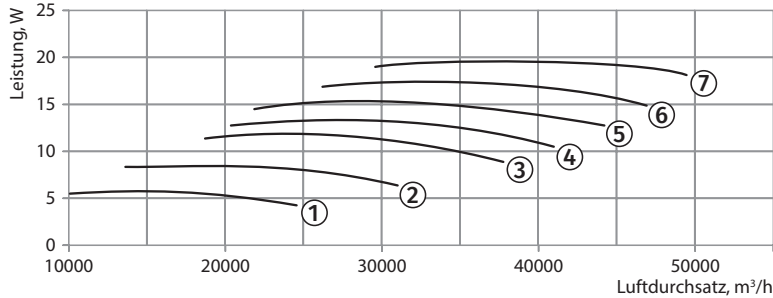


VK-VO Einströmdüse

Aerodynamische Eigenschaften



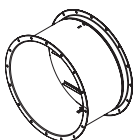
VDO-710-2



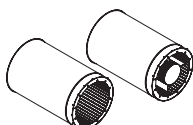
Technische Daten

| Standardgröße | Polanzahl des Motors | Spannung, V/50 Hz | Modell | Installierte Motorleistung Ny, kW | Drehzahl, min ⁻¹ | Anzahl der Laufradschaufeln | Schaufelwinkel, ° | Gewicht, kg | Länge L, mm | Nummer der Kurve auf der Grafik |
|---------------|----------------------|-------------------|---------------------------|-----------------------------------|-----------------------------|-----------------------------|-------------------|-------------|-------------|---------------------------------|
| 710 | 2 | 3~400 | VDO-710-2D/7,5-6/20/AL | 7,5 | 2880 | 6 | 20 | 151,3 | 560 | ① |
| | | | VDO-710-2D/9,2-6/25/AL | 9,2 | 2880 | 6 | 25 | 169,3 | 560 | ② |
| | | | VDO-710-2D/15-6/30/AL | 15 | 2880 | 6 | 30 | 195,3 | 750 | ③ |
| | | | VDO-710-2D/15-6/32,5/AL | 15 | 2880 | 6 | 32,5 | 195,3 | 750 | ④ |
| | | | VDO-710-2D/18,5-6/35/AL | 18,5 | 2880 | 6 | 35 | 210,3 | 750 | ⑤ |
| | | | VDO-710-2D/18,5-6/37,5/AL | 18,5 | 2880 | 6 | 37,5 | 210,3 | 750 | ⑥ |
| | | | VDO-710-2D/22-6/40/AL | 22 | 2880 | 6 | 40 | 256,3 | 750 | ⑦ |

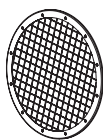
Zubehör



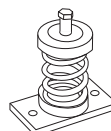
KOM-VO...400/2 Rückschlagklappe



SR SRV Schalldämpfer

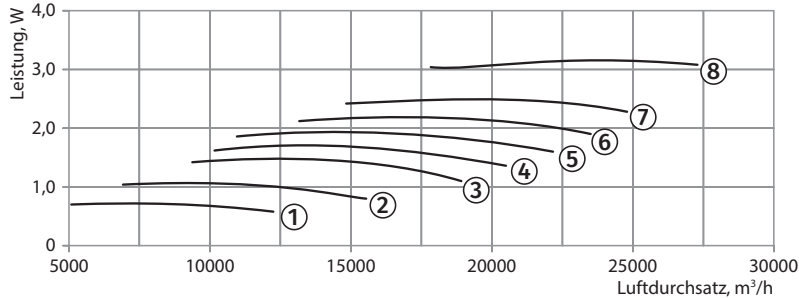
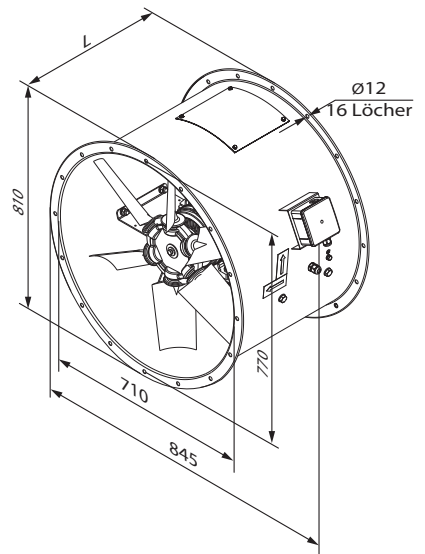
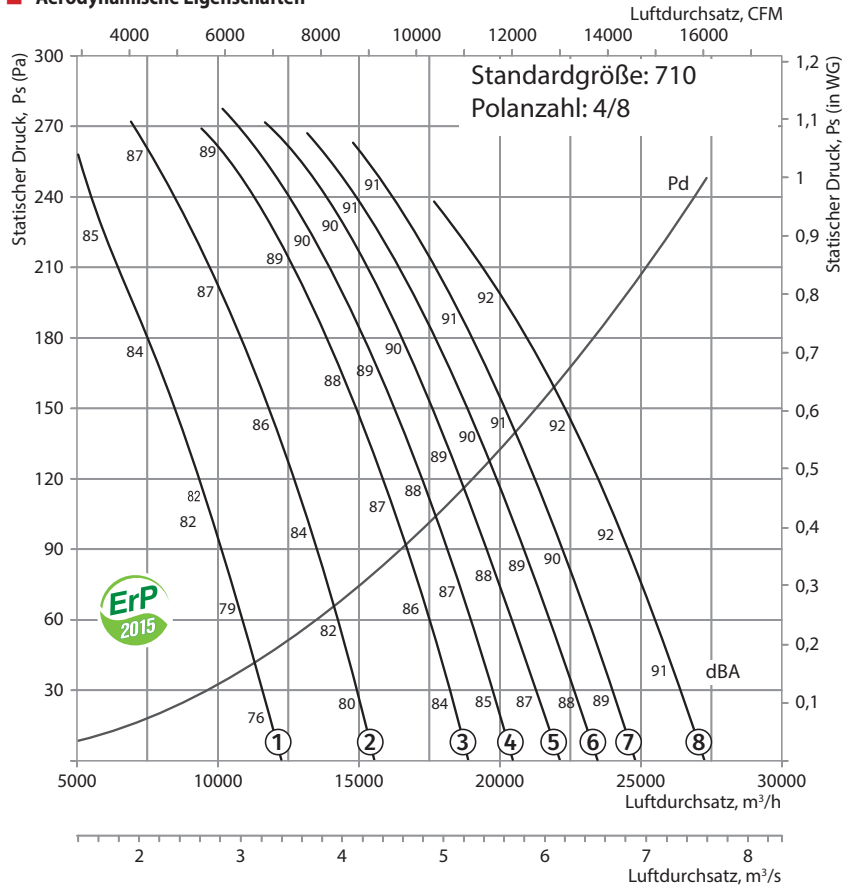


SZ-VO Schutzgitter



VVcp Vibrationsabsorbierendes Verbindungsstück

Aerodynamische Eigenschaften

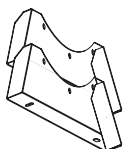


Technische Daten

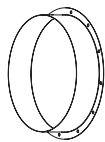
| Standardgröße | Polanzahl des Motors | Spannung, V/50 Hz | Modell | Installierte Motorleistung Ny, kW | Drehzahl, min ⁻¹ | Anzahl der Laufradschaufeln | Schaufelwinkel, ° | Gewicht, kg | Länge L, mm | Nummer der Kurve auf der Grafik |
|---------------|----------------------|-------------------|---------------------------------|-----------------------------------|-----------------------------|-----------------------------|-------------------|-------------|-------------|---------------------------------|
| 710 | 4/8 | 3~400 | VDO-710-4/8D/0,8/0,2-6/20/AL | 0,8/0,2 | 1440/720 | 6 | 20 | 99,3 | 450 | ①* |
| | | | VDO-710-4/8D/1,2/0,3-6/25/AL | 1,2/0,3 | 1440/720 | 6 | 25 | 104,3 | 450 | ②* |
| | | | VDO-710-4/8D/1,6/0,4-6/30/AL | 1,6/0,4 | 1440/720 | 6 | 30 | 107,3 | 450 | ③* |
| | | | VDO-710-4/8D/2,2/0,55-6/32,5/AL | 2,2/0,55 | 1440/720 | 6 | 32,5 | 114,3 | 560 | ④* |
| | | | VDO-710-4/8D/2,2/0,55-6/35/AL | 2,2/0,55 | 1440/720 | 6 | 35 | 114,3 | 560 | ⑤* |
| | | | VDO-710-4/8D/2,2/0,55-6/37,5/AL | 2,2/0,55 | 1440/720 | 6 | 37,5 | 114,3 | 560 | ⑥* |
| | | | VDO-710-4/8D/2,8/0,7-6/40/AL | 2,8/0,7 | 1440/720 | 6 | 40 | 117,3 | 560 | ⑦* |
| | | | VDO-710-4/8D/3,8/1-6/45/AL | 3,8/1 | 1440/720 | 6 | 45 | 127,3 | 560 | ⑧* |

*Höchstgeschwindigkeitsdiagramm

Zubehör



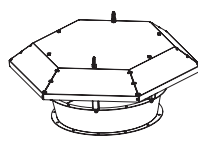
O-VO Halterung



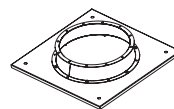
F-VO Flansche



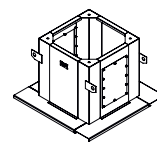
VVGf-VO...400/2 Flexibler Einsatz



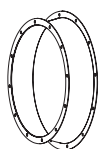
Z-VO Haube



PK-VO Dachadapter

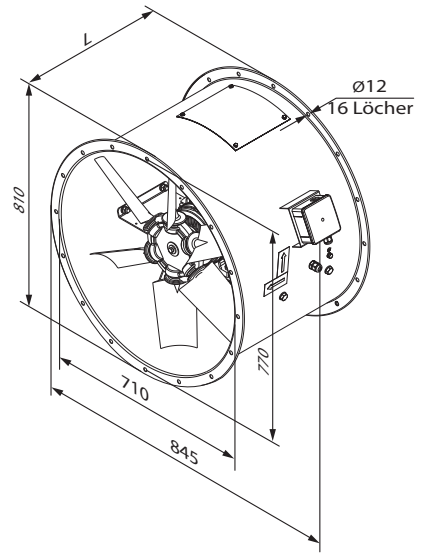
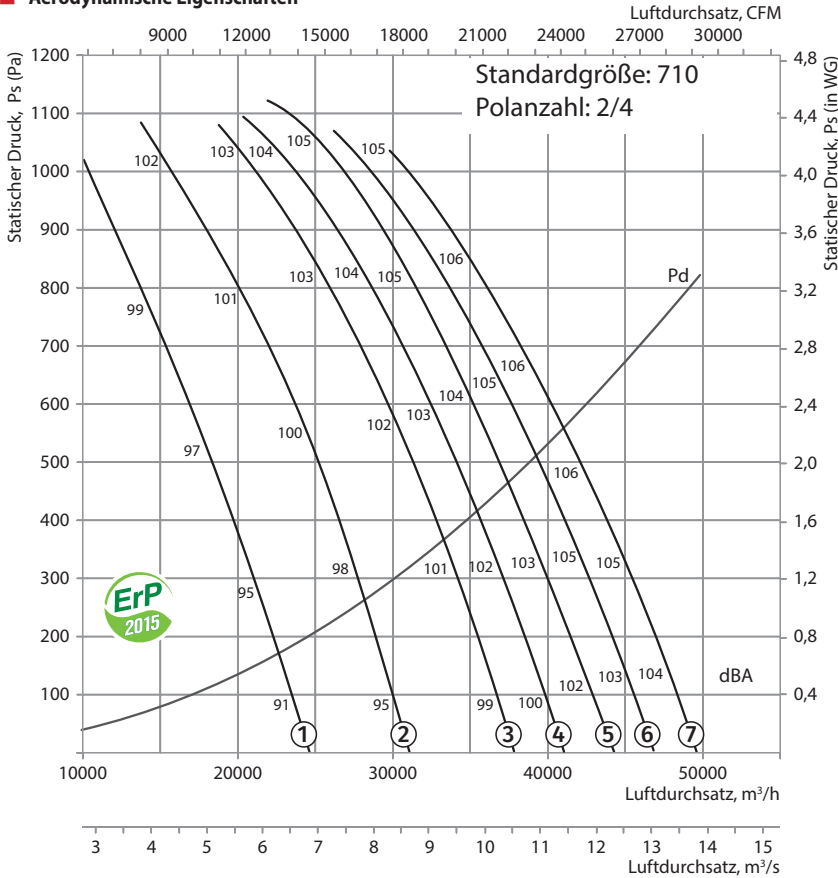


SM-VO Montagekasten

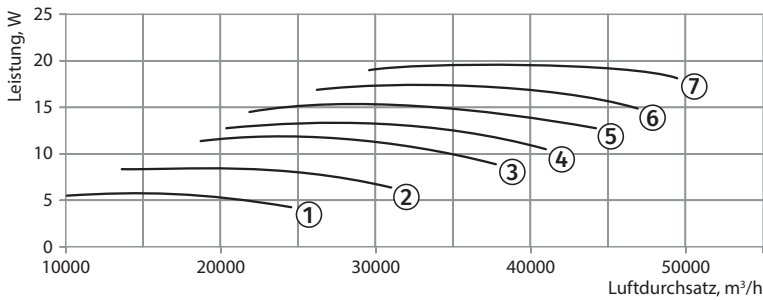


VK-VO Einströmdüse

Aerodynamische Eigenschaften



VDO-710-2/4

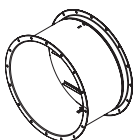


Technische Daten

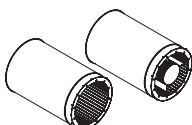
| Standardgröße | Polanzahl des Motors | Spannung, V/50 Hz | Modell | Installierte Motorleistung Ny, kW | Drehzahl, min ⁻¹ | Anzahl der Laufradschaufeln | Schaufelwinkel, ° | Gewicht, kg | Länge L, mm | Numer der Kurve auf der Grafik |
|---------------|----------------------|-------------------|-------------------------------|-----------------------------------|-----------------------------|-----------------------------|-------------------|-------------|-------------|--------------------------------|
| 710 | 2/4 | 3~400 | VDO-710-2/4D/6/1,5-6/20/AL | 6/1,5 | 2880/1440 | 6 | 20 | 142,3 | 560 | ①* |
| | | | VDO-710-2/4D/12/3-6/25/AL | 12/3 | 2880/1440 | 6 | 25 | 202,3 | 750 | ②* |
| | | | VDO-710-2/4D/12/3-6/30/AL | 12/3 | 2880/1440 | 6 | 30 | 202,3 | 750 | ③* |
| | | | VDO-710-2/4D/16/4-6/32,5/AL | 16/4 | 2880/1440 | 6 | 32,5 | 219,3 | 750 | ④* |
| | | | VDO-710-2/4D/16/4-6/35/AL | 16/4 | 2880/1440 | 6 | 35 | 219,3 | 750 | ⑤* |
| | | | VDO-710-2/4D/20/5,5-6/37,5/AL | 20/5,5 | 2880/1440 | 6 | 37,5 | 244,3 | 750 | ⑥* |
| | | | VDO-710-2/4D/20/5,5-6/40/AL | 20/5,5 | 2880/1440 | 6 | 40 | 244,3 | 750 | ⑦* |

*Höchstgeschwindigkeitsdiagramm

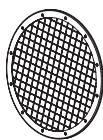
Zubehör



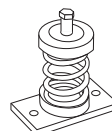
KOM-VO...400/2 Rückschlagklappe



SR Schalldämpfer SRV

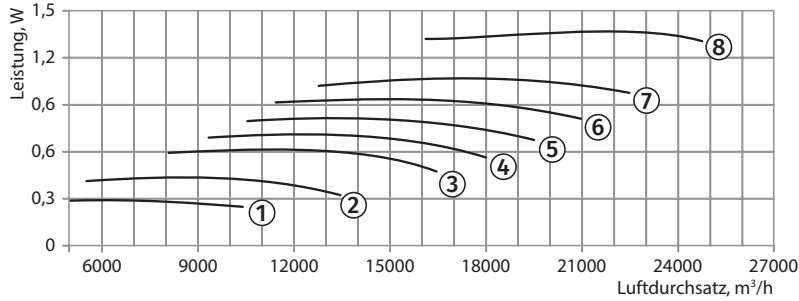
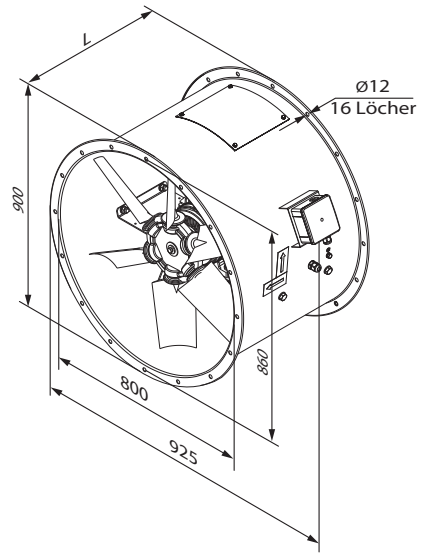
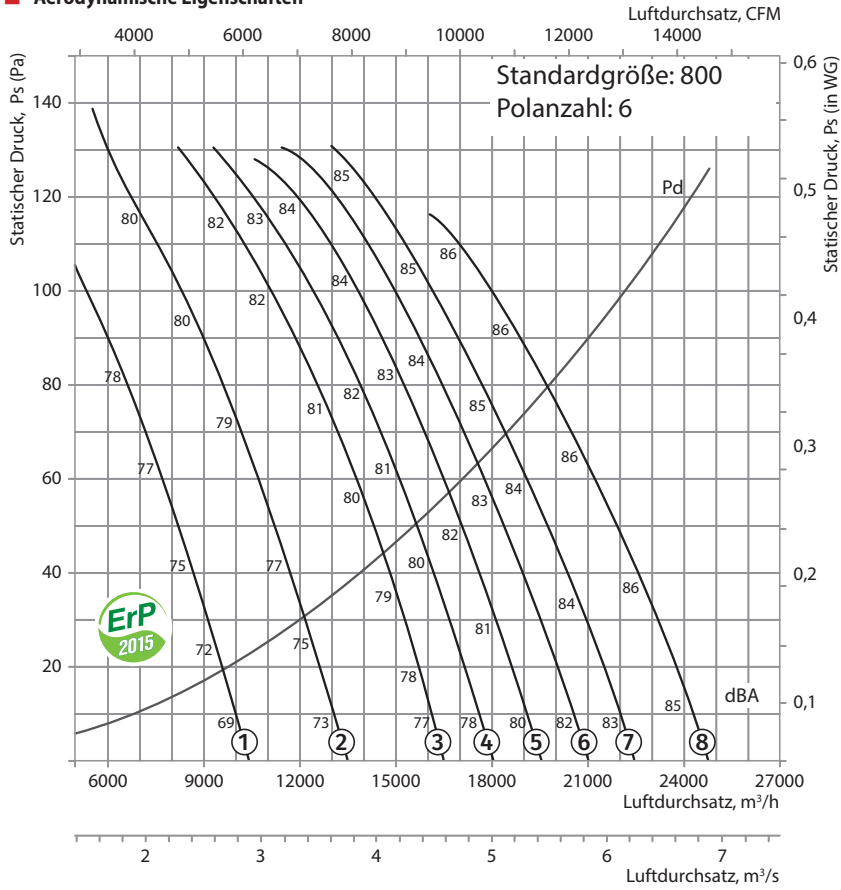


SZ-VO Schutzgitter



VVCp Vibrationsabsorbierendes Verbindungsstück

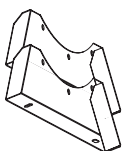
Aerodynamische Eigenschaften



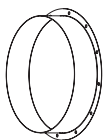
Technische Daten

| Anwendung | Polanzahl des Motors | Spannung, V/50 Hz | Modell | Installierte Motorleistung Ny, kW | Drehzahl, min ⁻¹ | Anzahl der Laufradschaufeln | Schaufelwinkel, ° | Gewicht, kg | Länge L, mm | Nummer der Kurve auf der Grafik |
|-----------|----------------------|-------------------|---------------------------|-----------------------------------|-----------------------------|-----------------------------|-------------------|-------------|-------------|---------------------------------|
| 800 | 6 | 3~400 | VDO-800-6D/0,37-6/20/AL | 0,37 | 960 | 6 | 20 | 109,6 | 400 | ① |
| | | | VDO-800-6D/0,55-6/25/AL | 0,55 | 960 | 6 | 25 | 110,6 | 400 | ② |
| | | | VDO-800-6D/0,75-6/30/AL | 0,75 | 960 | 6 | 30 | 115,6 | 400 | ③ |
| | | | VDO-800-6D/0,75-6/32,5/AL | 0,75 | 960 | 6 | 32,5 | 115,6 | 400 | ④ |
| | | | VDO-800-6D/1,1-6/35/AL | 1,1 | 960 | 6 | 35 | 119,6 | 400 | ⑤ |
| | | | VDO-800-6D/1,1-6/37,5/AL | 1,1 | 960 | 6 | 37,5 | 119,6 | 400 | ⑥ |
| | | | VDO-800-6D/1,1-6/40/AL | 1,1 | 960 | 6 | 40 | 119,6 | 400 | ⑦ |
| | | | VDO-800-6D/1,5-6/45/AL | 1,5 | 960 | 6 | 45 | 122,6 | 500 | ⑧ |

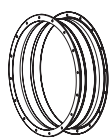
Zubehör



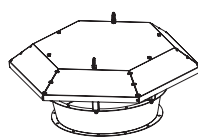
O-VO Halterung



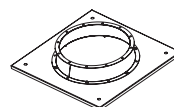
F-VO Flansche



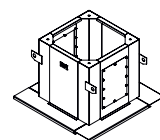
VVGf-VO...400/2 Flexibler Einsatz



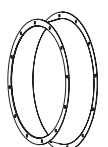
Z-VO Haube



PK-VO Dachadapter

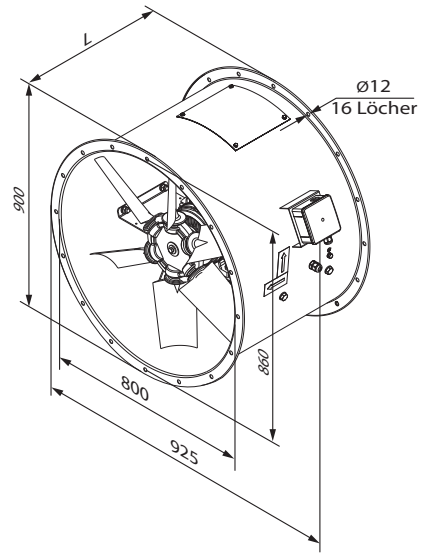
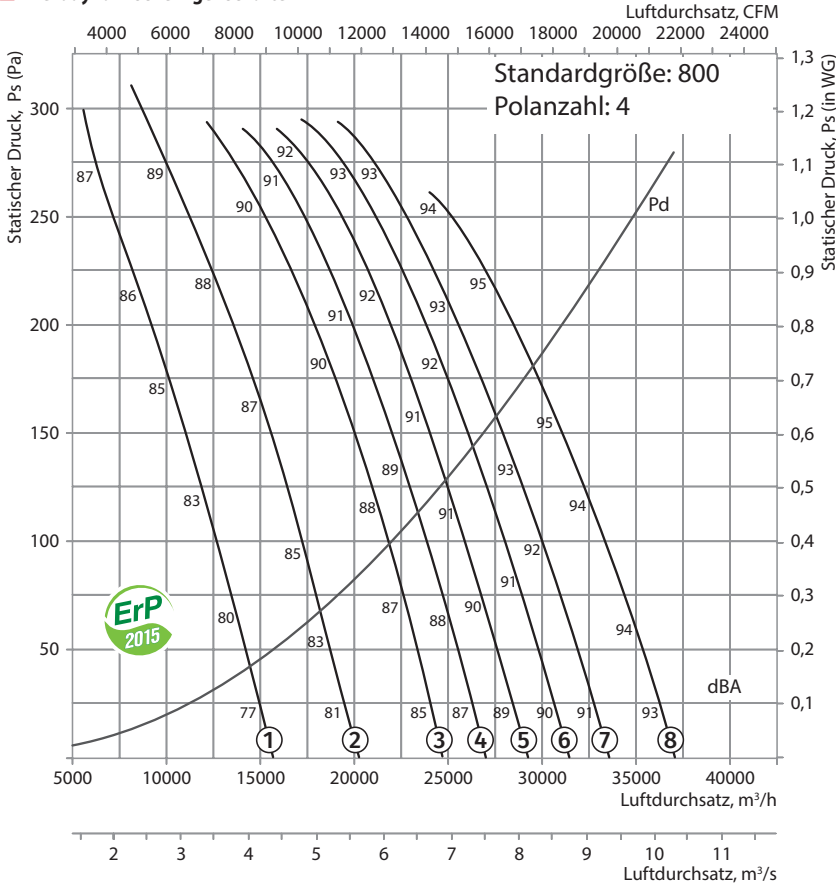


SM-VO Montagekasten

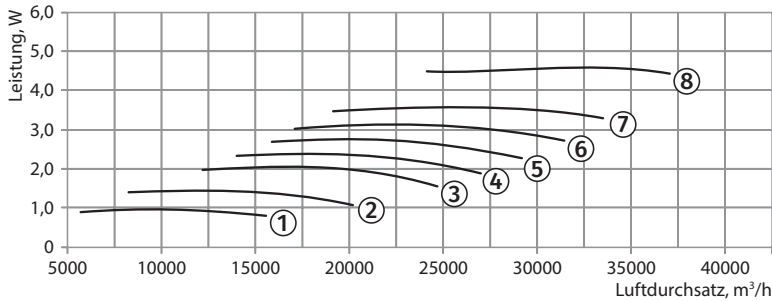


VK-VO Einströmdüse

Aerodynamische Eigenschaften



VDO-800-4

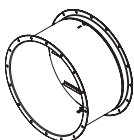


Technische Daten

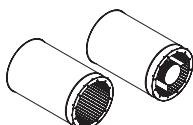
| Anwendung | Polanzahl des Motors | Spannung, V/50 Hz | Modell | Installierte Motorleistung Ny, kW | Drehzahl, min ⁻¹ | Anzahl der Laufradschaufeln | Schaufelwinkel, ° | Gewicht, kg | Länge L, mm | Nummer der Kurve auf der Grafik |
|-----------|----------------------|-------------------|--------------------------------|-----------------------------------|-----------------------------|-----------------------------|-------------------|-------------|-------------|---------------------------------|
| 800 | 4 | 3~400 | VDO-800-4D/1,1-6/20/AL | 1,1 | 1440 | 6 | 20 | 116,6 | 400 | ① |
| | | | VDO-800-4D/1,5-6/25/AL | 1,5 | 1440 | 6 | 25 | 119,6 | 400 | ② |
| | | | VDO-800-4D/2,2-6/30/AL | 2,2 | 1440 | 6 | 30 | 125,6 | 400 | ③ |
| | | | VDO-800-4D/3-6/32,5/AL | 3 | 1440 | 6 | 32,5 | 128,6 | 500 | ④ |
| | | | VDO-800-4D/3-6/35/AL | 3 | 1440 | 6 | 35 | 128,6 | 500 | ⑤ |
| | | | VDO-800-4D/4-6/37,5/AL | 4 | 1440 | 6 | 37,5 | 142,6 | 500 | ⑥ |
| | | | VDO-800-4D/4-6/40/AL | 4 | 1440 | 6 | 40 | 142,6 | 500 | ⑦ |
| | | | VDO-800-4D/5,5-6/45/AL | 5,5 | 1440 | 6 | 45 | 156,6 | 500 | ⑧ |
| 800 | 4/8 | 3~400 | VDO-800-4/8D/1,2/0,3-6/20/AL | 1,2/0,3 | 1440/720 | 6 | 20 | 115,6 | 400 | ①* |
| | | | VDO-800-4/8D/1,6/0,4-6/25/AL | 1,6/0,4 | 1440/720 | 6 | 25 | 118,6 | 400 | ②* |
| | | | VDO-800-4/8D/2,2/0,55-6/30/AL | 2,2/0,55 | 1440/720 | 6 | 30 | 125,6 | 500 | ③* |
| | | | VDO-800-4/8D/2,8/0,7-6/32,5/AL | 2,8/0,7 | 1440/720 | 6 | 32,5 | 128,6 | 500 | ④* |
| | | | VDO-800-4/8D/2,8/0,7-6/35/AL | 2,8/0,7 | 1440/720 | 6 | 35 | 128,6 | 500 | ⑤* |
| | | | VDO-800-4/8D/3,8/1-6/37,5/AL | 3,8/1 | 1440/720 | 6 | 37,5 | 138,6 | 500 | ⑥* |
| | | | VDO-800-4/8D/3,8/1-6/40/AL | 3,8/1 | 1440/720 | 6 | 40 | 138,6 | 500 | ⑦* |
| | | | VDO-800-4/8D/5/1,3-6/45/AL | 5/1,3 | 1440/720 | 6 | 45 | 163,6 | 600 | ⑧* |

*Höchstgeschwindigkeitsdiagramm

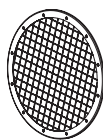
Zubehör



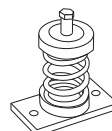
KOM-VO..400/2 Rückschlagklappe



SR SRV Schalldämpfer

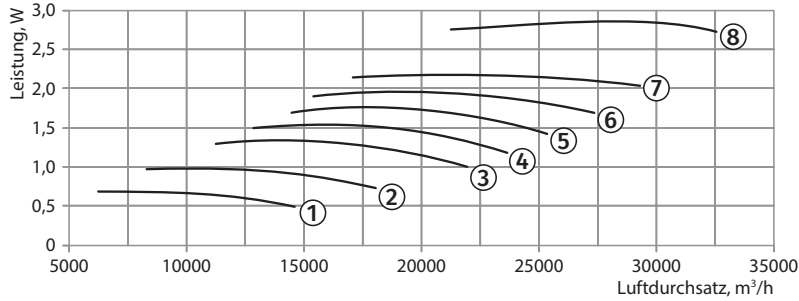
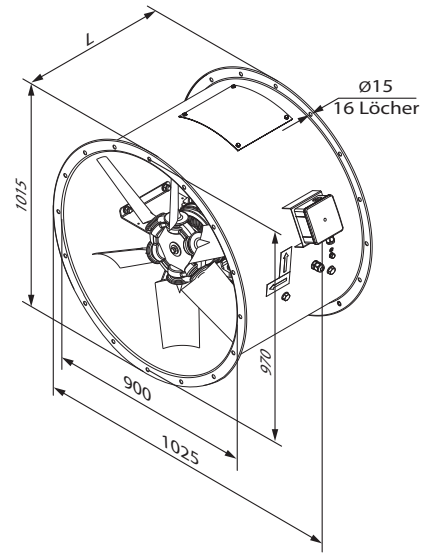
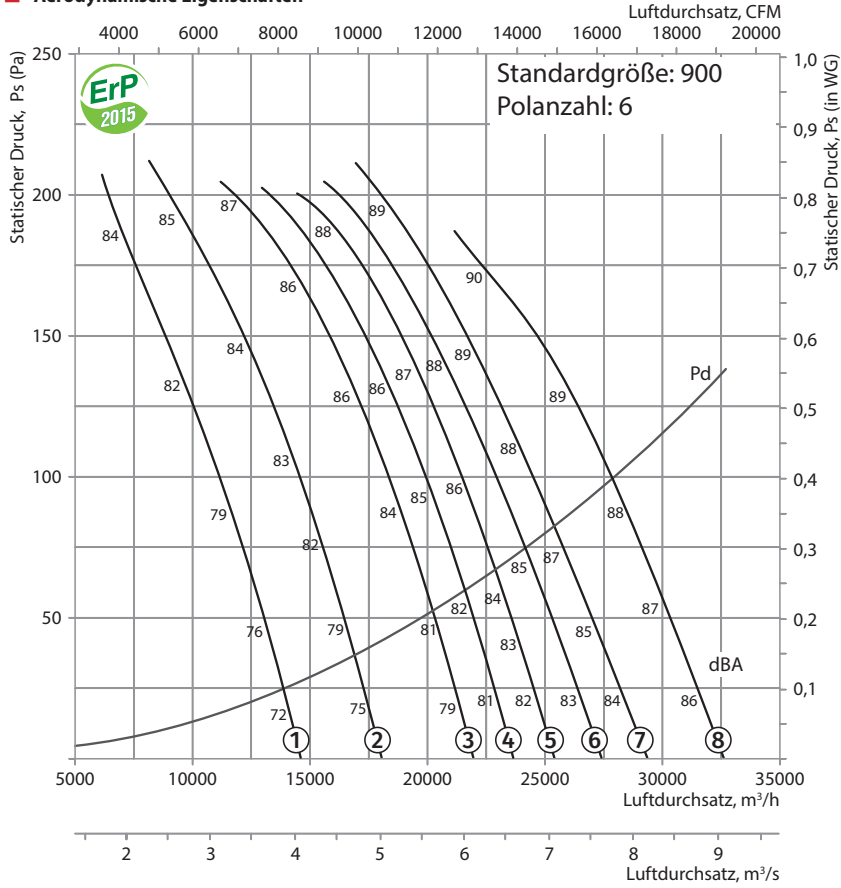


SZ-VO Schutzgitter



VVcp Vibrationsabsorbierendes Verbindungsstück

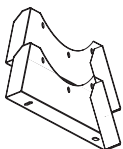
Aerodynamische Eigenschaften



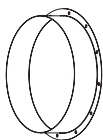
Technische Daten

| Anwendung | Polanzahl des Motors | Spannung, V/50 Hz | Modell | Installierte Motorleistung Ny, kW | Drehzahl, min ⁻¹ | Anzahl der Laufradschaufeln | Schaufelwinkel, ° | Gewicht, kg | Länge L, mm | Nummer der Kurve auf der Grafik |
|-----------|----------------------|-------------------|--------------------------|-----------------------------------|-----------------------------|-----------------------------|-------------------|-------------|-------------|---------------------------------|
| 900 | 6 | 3~400 | VDO-900-6D/0,75-8/20/AL | 0,75 | 960 | 8 | 20 | 120,8 | 400 | ① |
| | | | VDO-900-6D/1,1-8/25/AL | 1,1 | 960 | 8 | 25 | 124,8 | 400 | ② |
| | | | VDO-900-6D/1,5-8/30/AL | 1,5 | 960 | 8 | 30 | 127,8 | 500 | ③ |
| | | | VDO-900-6D/1,5-8/32,5/AL | 1,5 | 960 | 8 | 32,5 | 127,8 | 500 | ④ |
| | | | VDO-900-6D/2,2-8/35/AL | 2,2 | 960 | 8 | 35 | 138,8 | 500 | ⑤ |
| | | | VDO-900-6D/2,2-8/37,5/AL | 2,2 | 960 | 8 | 37,5 | 138,8 | 500 | ⑥ |
| | | | VDO-900-6D/2,2-8/40/AL | 2,2 | 960 | 8 | 40 | 138,8 | 500 | ⑦ |
| | | | VDO-900-6D/3-8/45/AL | 3 | 960 | 8 | 45 | 152,8 | 500 | ⑧ |

Zubehör



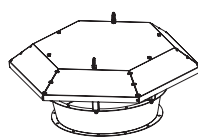
O-VO Halterung



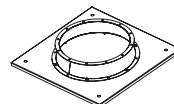
F-VO Flansche



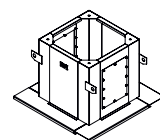
VVGf-VO...400/2 Flexibler Einsatz



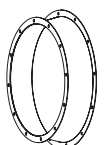
Z-VO Haube



PK-VO Dachadapter

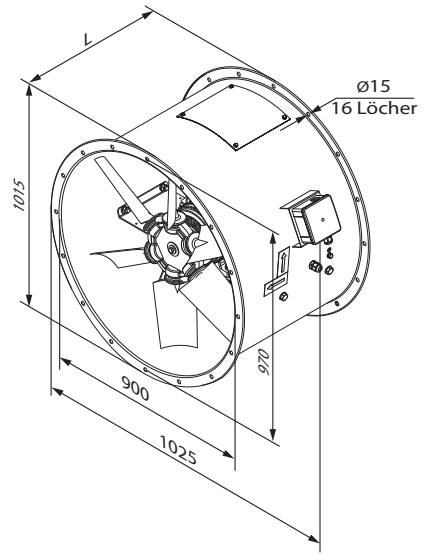
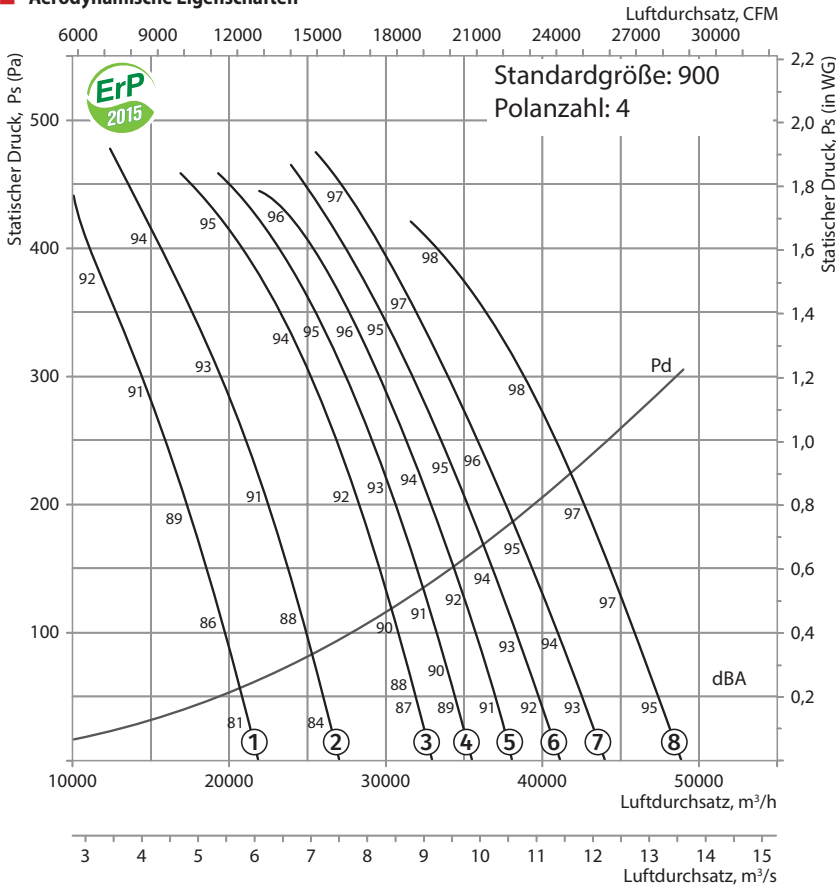


SM-VO Montagekasten

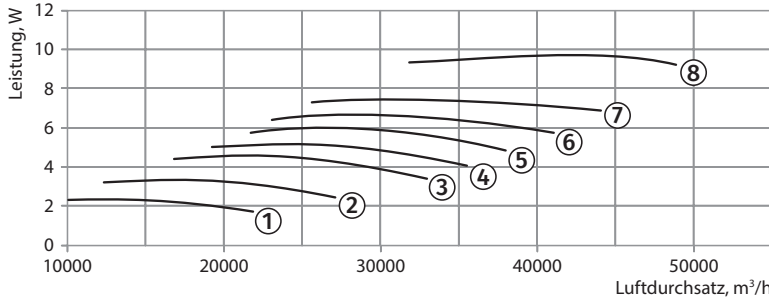


VK-VO Einströmdüse

Aerodynamische Eigenschaften



VDO-900-4

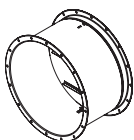


Technische Daten

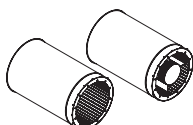
| Anwendung | Polanzahl des Motors | Spannung, V/50 Hz | Modell | Installierte Motorleistung Ny, kW | Drehzahl, min ⁻¹ | Anzahl der Laufrad-schaufeln | Schaufelwinkel, ° | Gewicht, kg | Länge L, mm | Nummer der Kurve auf der Grafik |
|-----------|----------------------|-------------------|--------------------------------|-----------------------------------|-----------------------------|------------------------------|-------------------|-------------|-------------|---------------------------------|
| 900 | 4 | 3~400 | VDO-900-4D/3-8/20/AL | 3 | 1440 | 8 | 20 | 133,8 | 400 | ① |
| | | | VDO-900-4D/4-8/25/AL | 4 | 1440 | 8 | 25 | 147,8 | 500 | ② |
| | | | VDO-900-4D/5,5-8/30/AL | 5,5 | 1440 | 8 | 30 | 161,8 | 500 | ③ |
| | | | VDO-900-4D/5,5-8/32,5/AL | 5,5 | 1440 | 8 | 32,5 | 161,8 | 500 | ④ |
| | | | VDO-900-4D/7,5-8/35/AL | 7,5 | 1440 | 8 | 35 | 169,8 | 600 | ⑤ |
| | | | VDO-900-4D/7,5-8/37,5/AL | 7,5 | 1440 | 8 | 37,5 | 169,8 | 600 | ⑥ |
| | | | VDO-900-4D/7,5-8/40/AL | 7,5 | 1440 | 8 | 40 | 169,8 | 600 | ⑦ |
| | | | VDO-900-4D/11-8/45/AL | 11,0 | 1440 | 8 | 45 | 206,8 | 600 | ⑧ |
| 900 | 4/8 | 3~400 | VDO-900-4/8D/2,8/0,7-8/20/AL | 2,8/0,7 | 1440/720 | 8 | 20 | 133,8 | 500 | ①* |
| | | | VDO-900-4/8D/3,8/1-8/25/AL | 3,8/1 | 1440/720 | 8 | 25 | 143,8 | 500 | ②* |
| | | | VDO-900-4/8D/5/1,3-8/30/AL | 5/1,3 | 1440/720 | 8 | 30 | 168,8 | 600 | ③* |
| | | | VDO-900-4/8D/7,2/1,8-8/32,5/AL | 7,2/1,8 | 1440/720 | 8 | 32,5 | 180,8 | 600 | ④* |
| | | | VDO-900-4/8D/7,2/1,8-8/35/AL | 7,2/1,8 | 1440/720 | 8 | 35 | 180,8 | 600 | ⑤* |
| | | | VDO-900-4/8D/7,2/1,8-8/37,5/AL | 7,2/1,8 | 1440/720 | 8 | 37,5 | 180,8 | 600 | ⑥* |
| | | | VDO-900-4/8D/11/3-8/40/AL | 11/3 | 1440/720 | 8 | 40 | 219,8 | 700 | ⑦* |
| | | | VDO-900-4/8D/11/3-8/45/AL | 11/3 | 1440/720 | 8 | 45 | 219,8 | 700 | ⑧* |

*Höchstgeschwindigkeitsdiagramm

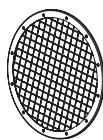
Zubehör



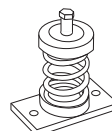
KOM-VO..400/2 Rückschlagklappe



SR SRV Schalldämpfer

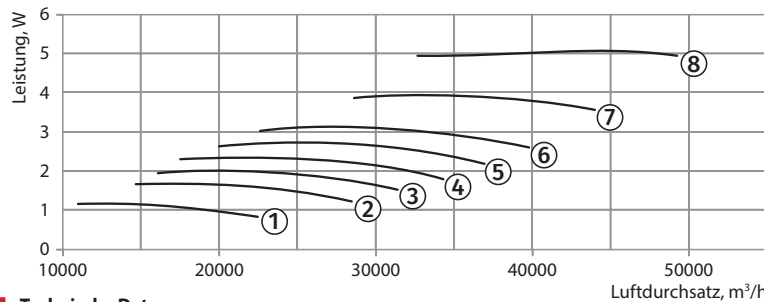
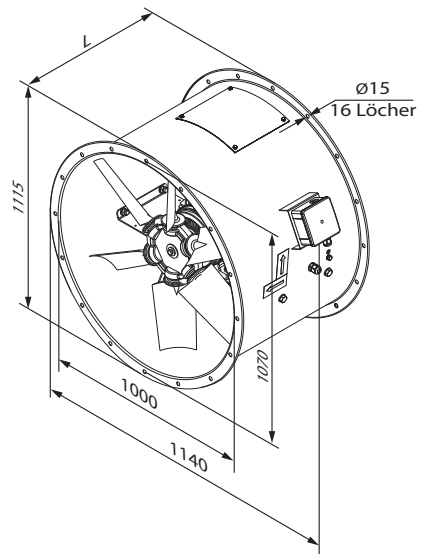
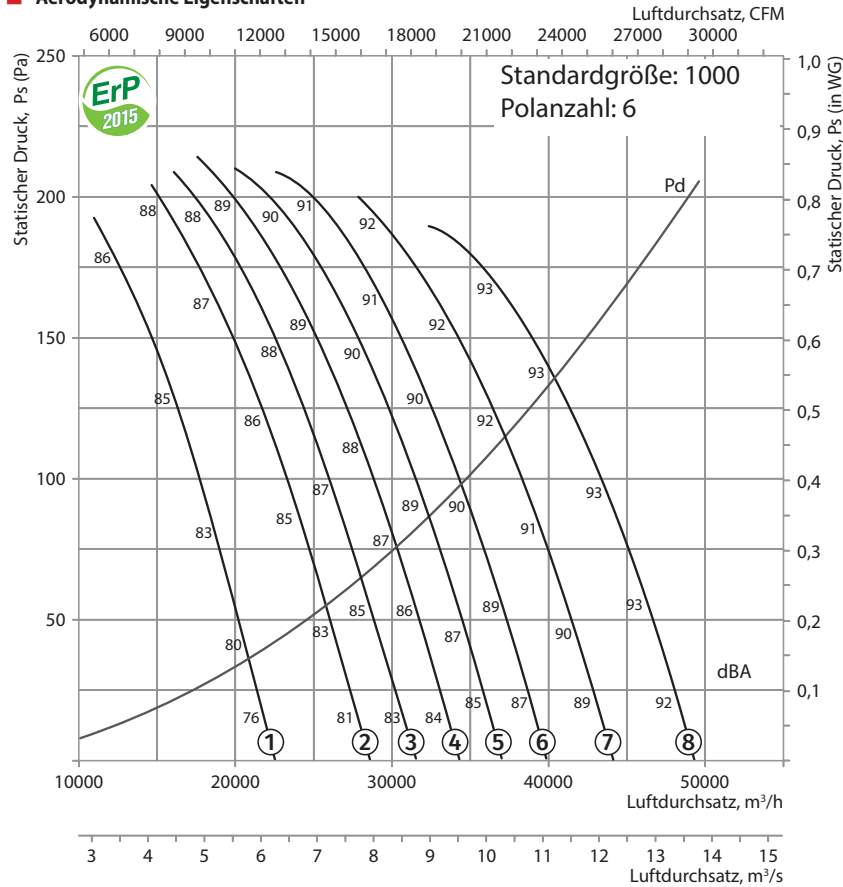


SZ-VO Schutzgitter



VVcP Vibrationsabsorbierendes Verbindungsstück

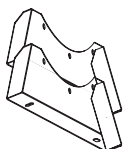
Aerodynamische Eigenschaften



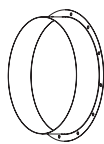
Technische Daten

| Anwendung | Polanzahl des Motors | Spannung, V/50 Hz | Modell | Installierte Motorleistung Ny, kW | Drehzahl, min ⁻¹ | Anzahl der Laufradschaufeln | Schaufelwinkel, ° | Gewicht, kg | Länge L, mm | Nummer der Kurve auf der Grafik |
|-----------|----------------------|-------------------|---------------------------|-----------------------------------|-----------------------------|-----------------------------|-------------------|-------------|-------------|---------------------------------|
| 1000 | 6 | 3~400 | VDO-1000-6D/1,5-8/25/AL | 1,5 | 960 | 8 | 25 | 165,5 | 550 | ① |
| | | | VDO-1000-6D/2,2-8/30/AL | 2,2 | 960 | 8 | 30 | 176,5 | 550 | ② |
| | | | VDO-1000-6D/2,2-8/32,5/AL | 2,2 | 960 | 8 | 32,5 | 176,5 | 550 | ③ |
| | | | VDO-1000-6D/3-8/35/AL | 3 | 960 | 8 | 35 | 190,5 | 650 | ④ |
| | | | VDO-1000-6D/3-8/37,5/AL | 3 | 960 | 8 | 37,5 | 190,5 | 650 | ⑤ |
| | | | VDO-1000-6D/4-8/40/AL | 4 | 960 | 8 | 40 | 204,5 | 650 | ⑥ |
| | | | VDO-1000-6D/5,5-8/45/AL | 5,5 | 960 | 8 | 45 | 211,5 | 650 | ⑦ |
| | | | VDO-1000-6D/5,5-8/50/AL | 5,5 | 960 | 8 | 50 | 211,5 | 650 | ⑧ |

Zubehör



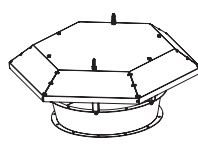
O-VO Halterung



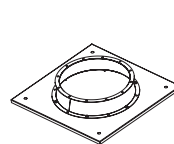
F-VO Flansche



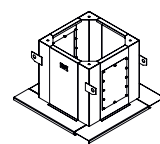
VVGf-VO...400/2 Flexibler Einsatz



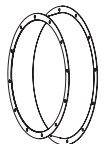
Z-VO Haube



PK-VO Dachadapter

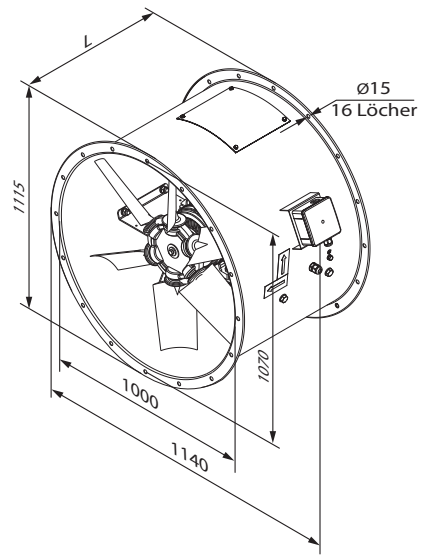
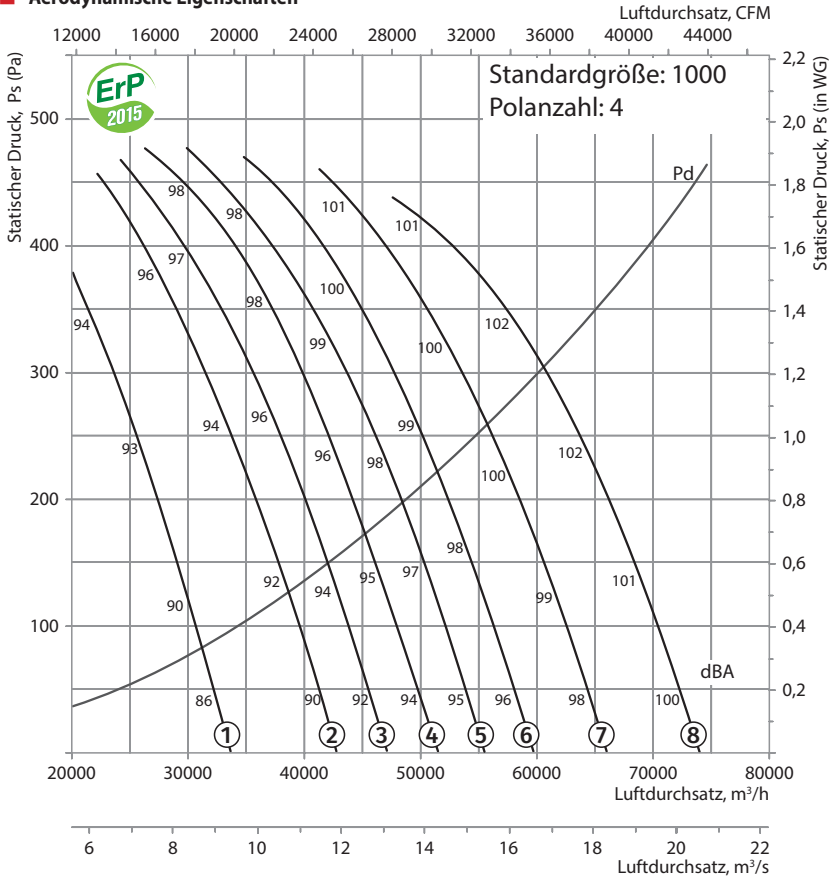


SM-VO Montagekasten

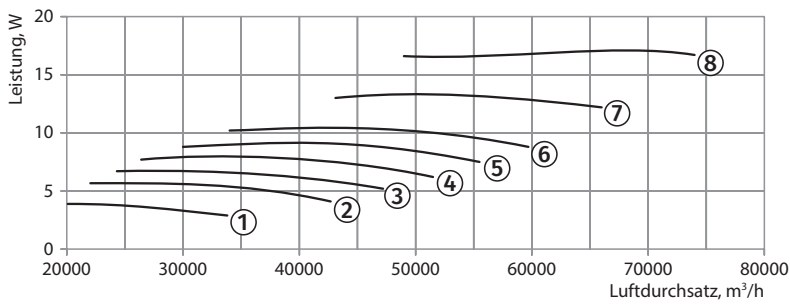


VK-VO Einströmdüse

Aerodynamische Eigenschaften



VDO-1000-4

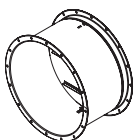


Technische Daten

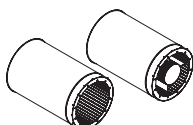
| Anwendung | Polanzahl des Motors | Spannung, V/50 Hz | Modell | Installierte Motorleistung Ny, kW | Drehzahl, min ⁻¹ | Anzahl der Laufradschaufeln | Schaufelwinkel, ° | Gewicht, kg | Länge L, mm | Nummer der Kurve auf der Grafik |
|-----------|----------------------|-------------------|---------------------------------|-----------------------------------|-----------------------------|-----------------------------|-------------------|-------------|-------------|---------------------------------|
| 1000 | 4 | 3~400 | VDO-1000-4D/5,5-8/25/AL | 5,5 | 1440 | 8 | 25 | 199,5 | 550 | ① |
| | | | VDO-1000-4D/7,5-8/30/AL | 7,5 | 1440 | 8 | 30 | 207,5 | 650 | ② |
| | | | VDO-1000-4D/7,5-8/32,5/AL | 7,5 | 1440 | 8 | 32,5 | 207,5 | 650 | ③ |
| | | | VDO-1000-4D/9,2-8/35/AL | 9,2 | 1440 | 8 | 35 | 226,5 | 650 | ④ |
| | | | VDO-1000-4D/11-8/37,5/AL | 11 | 1440 | 8 | 37,5 | 244,5 | 750 | ⑤ |
| | | | VDO-1000-4D/11-8/40/AL | 11 | 1440 | 8 | 40 | 244,5 | 750 | ⑥ |
| | | | VDO-1000-4D/15-8/45/AL | 15 | 1440 | 8 | 45 | 259,5 | 750 | ⑦ |
| | | | VDO-1000-4D/18,5-8/50/AL | 18,5 | 1440 | 8 | 50 | 312,5 | 850 | ⑧ |
| 1000 | 4/8 | 3~400 | VDO-1000-4/8D/5/1,3-8/25/AL | 5/1,3 | 1440/720 | 8 | 25 | 206,5 | 550 | ①* |
| | | | VDO-1000-4/8D/7,2/1,8-8/30/AL | 7,2/1,8 | 1440/720 | 8 | 30 | 218,5 | 650 | ②* |
| | | | VDO-1000-4/8D/7,2/1,8-8/32,5/AL | 7,2/1,8 | 1440/720 | 8 | 32,5 | 218,5 | 650 | ③* |
| | | | VDO-1000-4/8D/11/3-8/35/AL | 11/3 | 1440/720 | 8 | 35 | 257,5 | 650 | ④* |
| | | | VDO-1000-4/8D/11/3-8/37,5/AL | 11/3 | 1440/720 | 8 | 37,5 | 257,5 | 750 | ⑤* |
| | | | VDO-1000-4/8D/11/3-8/40/AL | 11/3 | 1440/720 | 8 | 40 | 257,5 | 750 | ⑥* |
| | | | VDO-1000-4/8D/14/3,5-8/45/AL | 14/3,5 | 1440/720 | 8 | 45 | 273,5 | 750 | ⑦* |
| | | | VDO-1000-4/8D/17/4,3-8/50/AL | 17/4,3 | 1440/720 | 8 | 50 | 273,5 | 850 | ⑧* |

*Höchstgeschwindigkeitsdiagramm

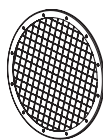
Zubehör



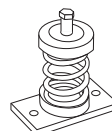
KOM-VO...400/2
Rückschlagklappe



SR SRV
Schalldämpfer

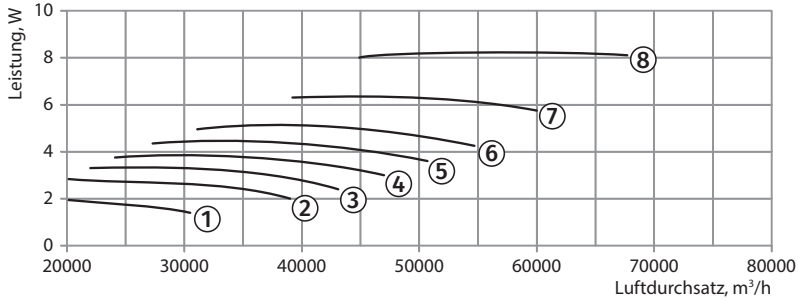
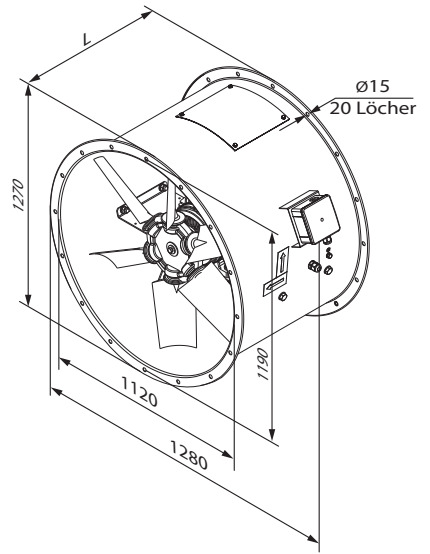
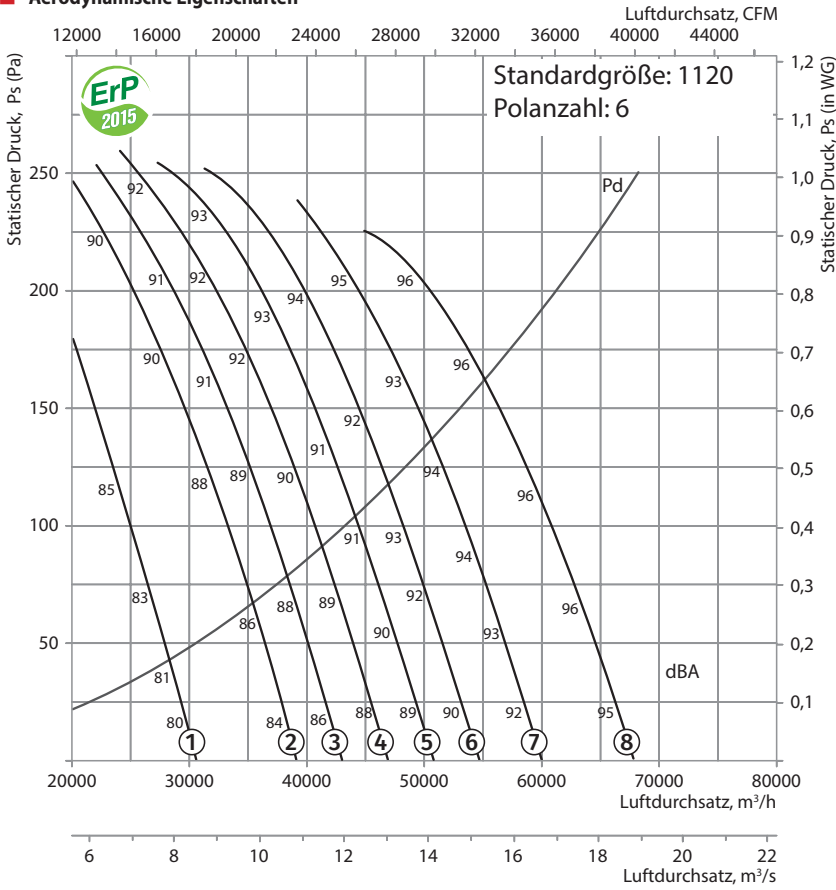


SZ-VO
Schutzgitter



VVcp
Vibrationsabsorbierendes Verbindungsstück

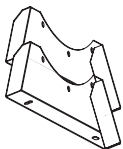
Aerodynamische Eigenschaften



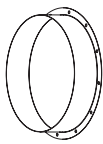
Technische Daten

| Anwendung | Polanzahl des Motors | Spannung, V/50 Hz | Modell | Installierte Motorleistung Ny, kW | Drehzahl, min ⁻¹ | Anzahl der Laufradschaufeln | Schaufelwinkel, ° | Gewicht, kg | Länge L, mm | Nummer der Kurve auf der Grafik |
|-----------|----------------------|-------------------|---------------------------|-----------------------------------|-----------------------------|-----------------------------|-------------------|-------------|-------------|---------------------------------|
| 1120 | 6 | 3~400 | VDO-1120-6D/2,2-8/25/AL | 2,2 | 960 | 8 | 25 | 195,5 | 550 | ① |
| | | | VDO-1120-6D/3-8/30/AL | 3 | 960 | 8 | 30 | 209,5 | 650 | ② |
| | | | VDO-1120-6D/4-8/32,5/AL | 4 | 960 | 8 | 32,5 | 223,5 | 650 | ③ |
| | | | VDO-1120-6D/4-8/35/AL | 4 | 960 | 8 | 35 | 223,5 | 650 | ④ |
| | | | VDO-1120-6D/5,5-8/37,5/AL | 5,5 | 960 | 8 | 37,5 | 230,5 | 650 | ⑤ |
| | | | VDO-1120-6D/5,5-8/40/AL | 5,5 | 960 | 8 | 40 | 230,5 | 650 | ⑥ |
| | | | VDO-1120-6D/7,5-8/45/AL | 7,5 | 960 | 8 | 45 | 262,5 | 750 | ⑦ |
| | | | VDO-1120-6D/9,2-8/50/AL | 9,2 | 960 | 8 | 50 | 274,5 | 750 | ⑧ |

Zubehör



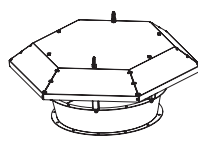
O-VO Halterung



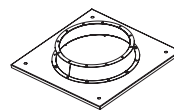
F-VO Flansche



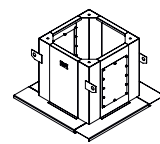
VVGf-VO...400/2 Flexibler Einsatz



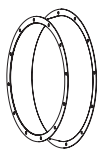
Z-VO Haube



PK-VO Dachadapter

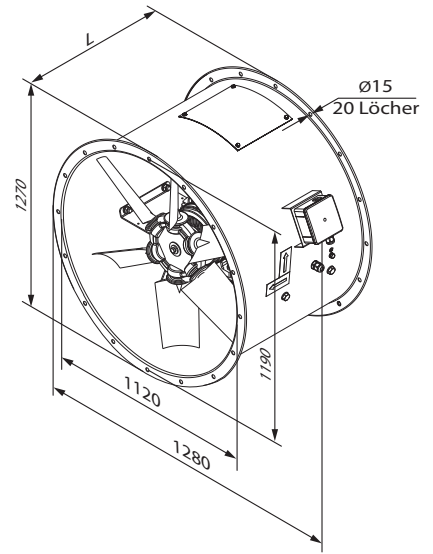
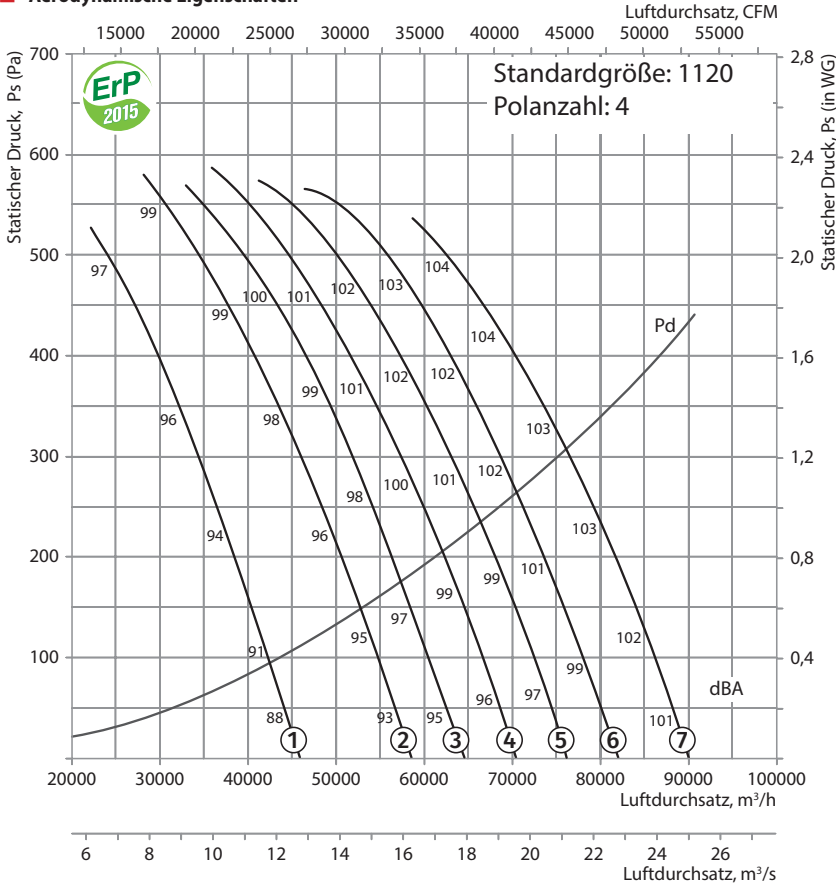


SM-VO Montagekasten

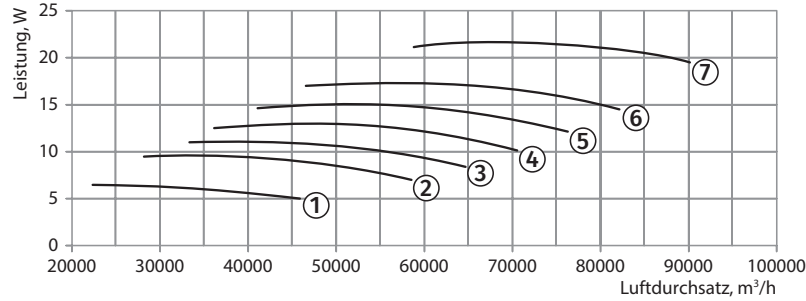


VK-VO Einströmdüse

Aerodynamische Eigenschaften



VDO-1120-4

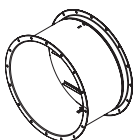


Technische Daten

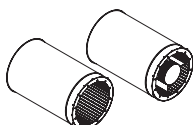
| Anwendung | Polanzahl des Motors | Spannung, V/50 Hz | Modell | Installierte Motorleistung Ny, kW | Drehzahl, min ⁻¹ | Anzahl der Laufradschaufeln | Schaukelwinkel, ° | Gewicht, kg | Länge L, mm | Nummer der Kurve auf der Grafik |
|-----------|----------------------|-------------------|--------------------------------|-----------------------------------|-----------------------------|-----------------------------|-------------------|-------------|-------------|---------------------------------|
| 1120 | 4 | 3~400 | VDO-1120-4D/7,5-8/25/AL | 7,5 | 1440 | 8 | 25 | 226,5 | 650 | ① |
| | | | VDO-1120-4D/11-8/30/AL | 11 | 1440 | 8 | 30 | 263,5 | 750 | ② |
| | | | VDO-1120-4D/11-8/32,5/AL | 11 | 1440 | 8 | 32,5 | 263,5 | 750 | ③ |
| | | | VDO-1120-4D/15-8/35/AL | 15 | 1440 | 8 | 35 | 278,5 | 750 | ④ |
| | | | VDO-1120-4D/18,5-8/37,5/AL | 18,5 | 1440 | 8 | 37,5 | 331,5 | 850 | ⑤ |
| | | | VDO-1120-4D/18,5-8/40/AL | 18,5 | 1440 | 8 | 40 | 331,5 | 850 | ⑥ |
| | | | VDO-1120-4D/22-8/45/AL | 22 | 1440 | 8 | 45 | 342,5 | 850 | ⑦ |
| 1120 | 4/8 | 3~400 | VDO-1120-4/8D/7,2/1,8-8/25/AL | 7,2/1,8 | 1440/720 | 8 | 25 | 237,5 | 650 | ①* |
| | | | VDO-1120-4/8D/11/3-8/30/AL | 11/3 | 1440/720 | 8 | 30 | 276,5 | 750 | ②* |
| | | | VDO-1120-4/8D/11/3-8/32,5/AL | 11/3 | 1440/720 | 8 | 32,5 | 276,5 | 750 | ③* |
| | | | VDO-1120-4/8D/14/3,5-8/35/AL | 14/3,5 | 1440/720 | 8 | 35 | 292,5 | 750 | ④* |
| | | | VDO-1120-4/8D/17/4,3-8/37,5/AL | 17/4,3 | 1440/720 | 8 | 37,5 | 319,5 | 850 | ⑤* |
| | | | VDO-1120-4/8D/20/5-8/40/AL | 20/5 | 1440/720 | 8 | 40 | 334,5 | 850 | ⑥* |
| | | | VDO-1120-4/8D/28/6,5-8/45/AL | 28/6,5 | 1440/720 | 8 | 45 | 392,5 | 850 | ⑦* |

*Höchstgeschwindigkeitsdiagramm

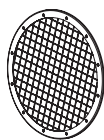
Zubehör



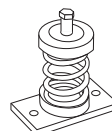
KOM-VO...400/2 Rückschlagklappe



SR SRV Schalldämpfer

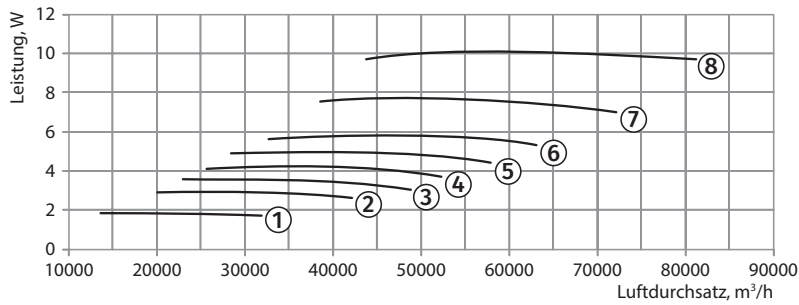
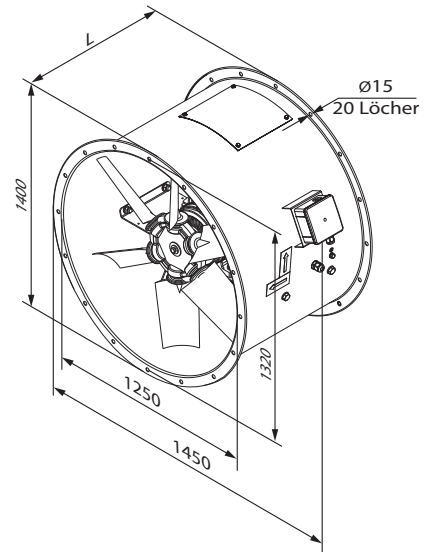
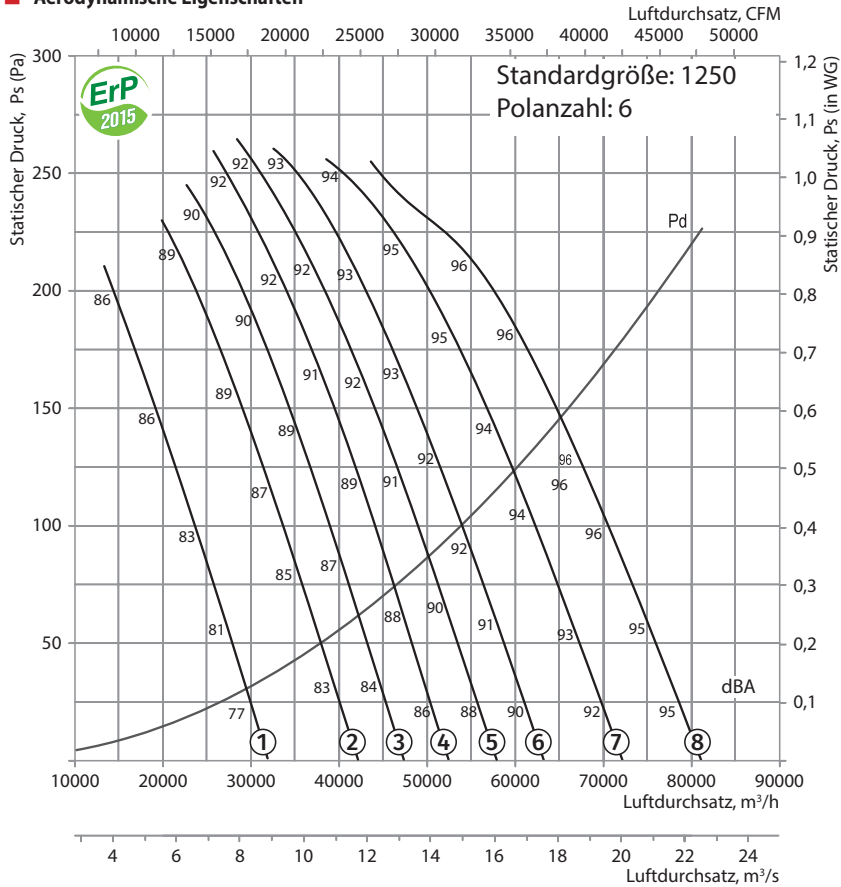


SZ-VO Schutzgitter



VVcp Vibrationsabsorbierendes Verbindungsstück

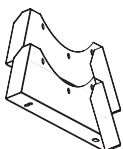
Aerodynamische Eigenschaften



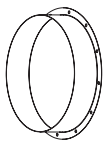
Technische Daten

| Anwendung | Polanzahl des Motors | Spannung, V/50 Hz | Modell | Installierte Motorleistung Ny, kW | Drehzahl, min ⁻¹ | Anzahl der Laufradschaufeln | Schaufelwinkel, ° | Gewicht, kg | Länge L, mm | Nummer der Kurve auf der Grafik |
|-----------|----------------------|-------------------|---------------------------|-----------------------------------|-----------------------------|-----------------------------|-------------------|-------------|-------------|---------------------------------|
| 1250 | 6 | 3~400 | VDO-1250-6D/2,2-8/25/AL | 2,2 | 960 | 8 | 25 | 214,5 | 550 | ① |
| | | | VDO-1250-6D/3-8/30/AL | 3 | 960 | 8 | 30 | 228,5 | 650 | ② |
| | | | VDO-1250-6D/4-8/32,5/AL | 4 | 960 | 8 | 32,5 | 242,5 | 650 | ③ |
| | | | VDO-1250-6D/5,5-8/35/AL | 5,5 | 960 | 8 | 35 | 249,5 | 650 | ④ |
| | | | VDO-1250-6D/5,5-8/37,5/AL | 5,5 | 960 | 8 | 37,5 | 249,5 | 650 | ⑤ |
| | | | VDO-1250-6D/7,5-8/40/AL | 7,5 | 960 | 8 | 40 | 281,5 | 750 | ⑥ |
| | | | VDO-1250-6D/9,2-8/45/AL | 9,2 | 960 | 8 | 45 | 293,5 | 750 | ⑦ |
| | | | VDO-1250-6D/11-8/50/AL | 11 | 960 | 8 | 50 | 306,5 | 750 | ⑧ |

Zubehör



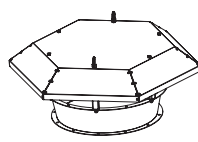
O-VO Halterung



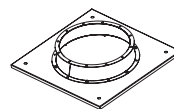
F-VO Flansche



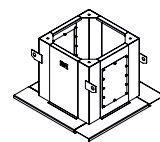
VVGF-VO...400/2 Flexibler Einsatz



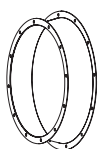
Z-VO Haube



PK-VO Dachadapter

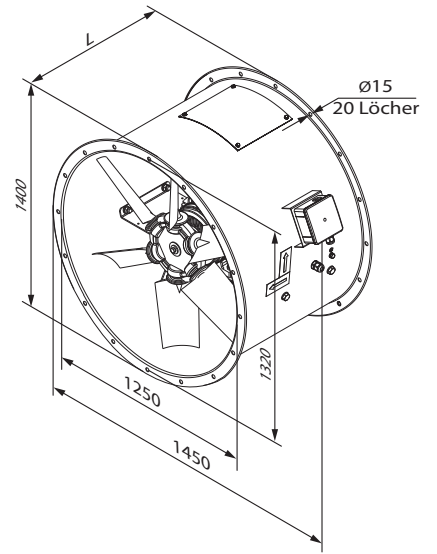
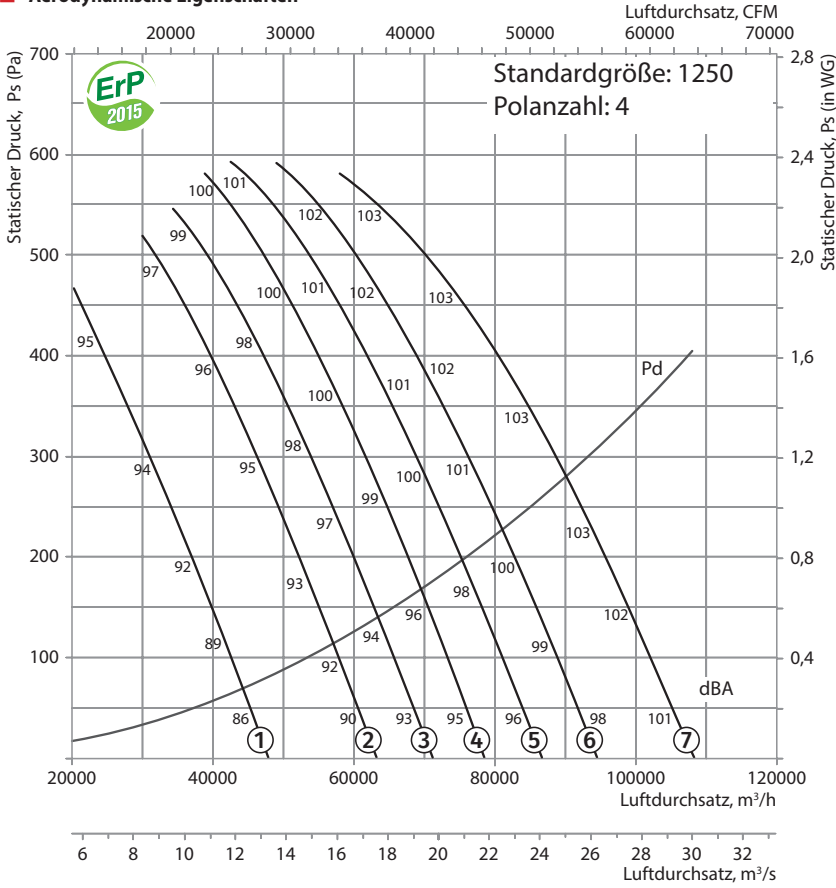


SM-VO Montagekasten

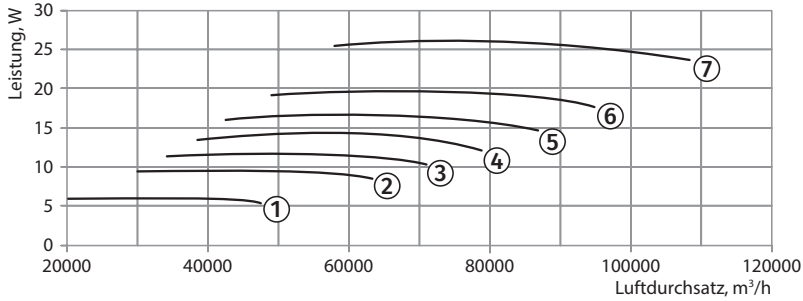


VK-VO Einströmdüse

Aerodynamische Eigenschaften



VDO-1250-4

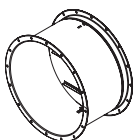


Technische Daten

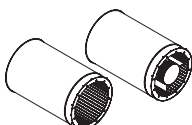
| Anwendung | Polanzahl des Motors | Spannung, V/50 Hz | Modell | Installierte Motorleistung Ny, kW | Drehzahl, min ⁻¹ | Anzahl der Laufradschaufeln | Schaufelwinkel, ° | Gewicht, kg | Länge L, mm | Nummer der Kurve auf der Grafik |
|-----------|----------------------|-------------------|--------------------------------|-----------------------------------|-----------------------------|-----------------------------|-------------------|-------------|-------------|---------------------------------|
| 1250 | 4 | 3~400 | VDO-1250-4D/7,5-8/25/AL | 7,5 | 1440 | 8 | 25 | 245,5 | 650 | ① |
| | | | VDO-1250-4D/11-8/30/AL | 11 | 1440 | 8 | 30 | 282,5 | 750 | ② |
| | | | VDO-1250-4D/15-8/32,5/AL | 15 | 1440 | 8 | 32,5 | 297,5 | 750 | ③ |
| | | | VDO-1250-4D/15-8/35/AL | 15 | 1440 | 8 | 35 | 297,5 | 750 | ④ |
| | | | VDO-1250-4D/18,5-8/37,5/AL | 18,5 | 1440 | 8 | 37,5 | 350,5 | 850 | ⑤ |
| | | | VDO-1250-4D/22-8/40/AL | 22 | 1440 | 8 | 40 | 361,5 | 850 | ⑥ |
| | | | VDO-1250-4D/30-8/45/AL | 30 | 1440 | 8 | 45 | 424,5 | 850 | ⑦ |
| 1250 | 4/8 | 3~400 | VDO-1250-4/8D/7,2/1,8-8/25/AL | 7,2/1,8 | 1440/720 | 8 | 25 | 256,5 | 650 | ①* |
| | | | VDO-1250-4/8D/11/3-8/30/AL | 11/3 | 1440/720 | 8 | 30 | 295,5 | 750 | ②* |
| | | | VDO-1250-4/8D/14/3,5-8/32,5/AL | 14/3,5 | 1440/720 | 8 | 32,5 | 311,5 | 750 | ③* |
| | | | VDO-1250-4/8D/14/3,5-8/35/AL | 14/3,5 | 1440/720 | 8 | 35 | 311,5 | 750 | ④* |
| | | | VDO-1250-4/8D/17/4,3-8/37,5/AL | 17/4,3 | 1440/720 | 8 | 37,5 | 338,5 | 850 | ⑤* |
| | | | VDO-1250-4/8D/20/5-8/40/AL | 20/5 | 1440/720 | 8 | 40 | 353,5 | 850 | ⑥* |
| | | | VDO-1250-4/8D/28/6,5-8/45/AL | 28/6,5 | 1440/720 | 8 | 45 | 411,5 | 850 | ⑦* |

*Höchstgeschwindigkeitsdiagramm

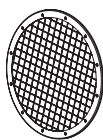
Zubehör



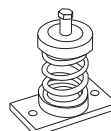
KOM-VO...400/2 Rückschlagklappe



SR SRV Schalldämpfer



SZ-VO Schutzgitter



VVcp Vibrationsabsorbierendes Verbindungsstück