



# DESIGN SOLUTIONS FOR CEILING FANS

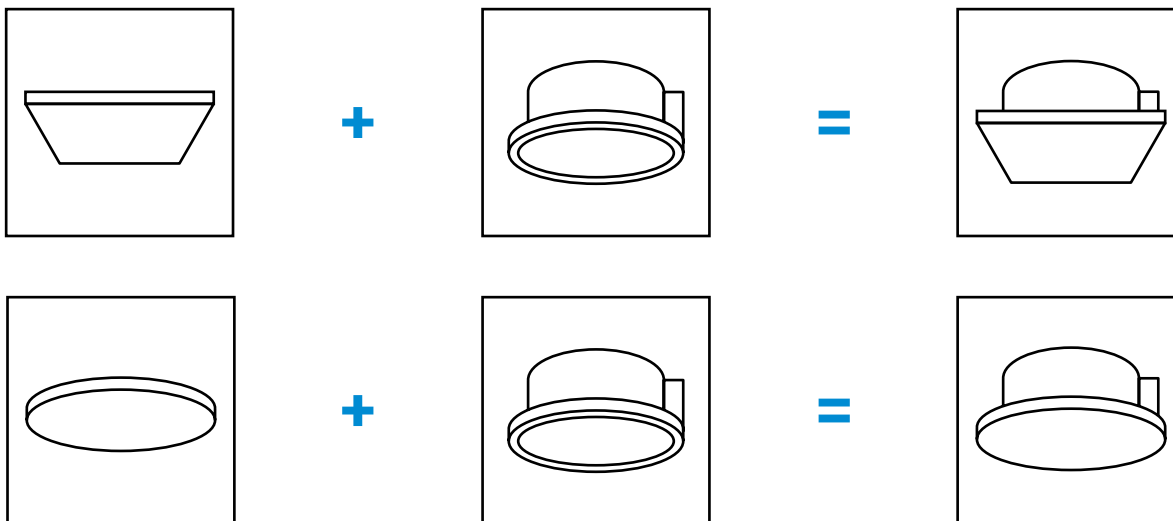
HBF CEILING EXHAUST FAN





## ■ ABOUT HBF

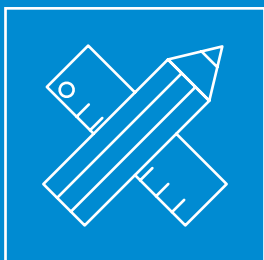
HBF is a series of design ceiling exhaust fans from VENTS, the world's leader in domestic ventilation. A variety of universal decorative panels is the final touch of ventilation in your interior design. High quality of VENTS fans, possibility of ceiling mounting, fine selection of front panel decor – all this in the new series of VENTS HBF fans.



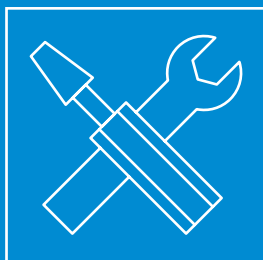


# FANS

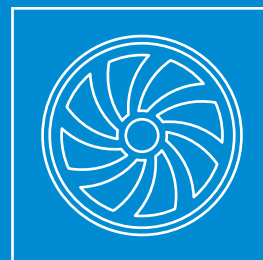
HBF is the most powerful and quietest fan for ceiling exhaust systems. With an air capacity up to 482 m<sup>3</sup>/h, it is one of the top fans on the market.



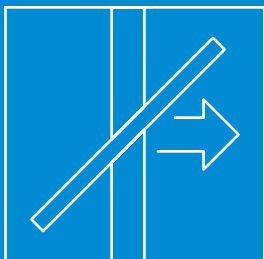
Modern style



Easy installation and service due to optimized design



High efficiency by the forward curved impeller



Integrated low-resistant backdraft damper



Silent operation through optimal casing design



Trouble-free with 5 years' warranty



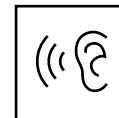
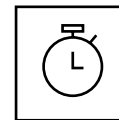
# ■ HBF 250

## Modifications and options:

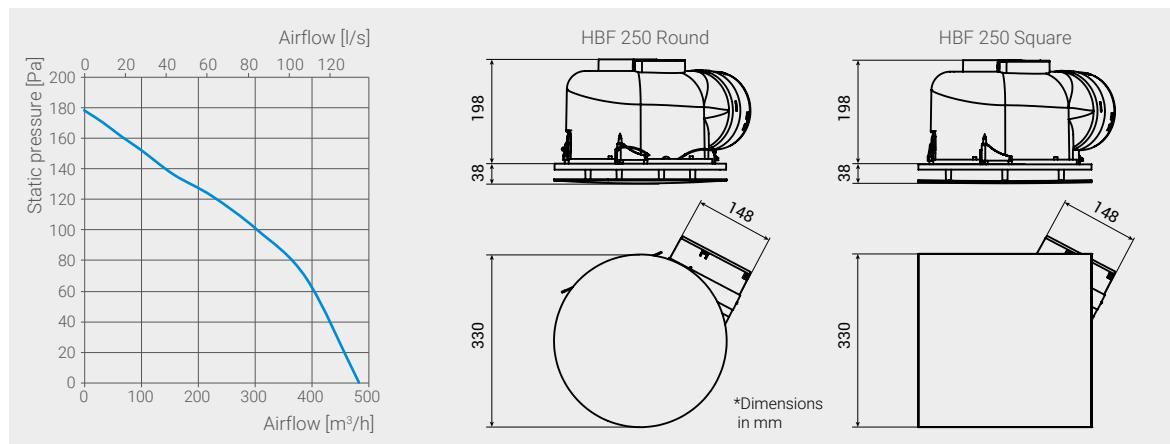
- HBF 250 T – modification with a turn-off delay timer adjustable from 2 to 30 minutes.
- HBF 250 TH – modification with a turn-off delay timer adjustable from 2 to 30 minutes and humidity sensor with threshold from 60% to 90%.

## Tested:

- In accordance with ISO 5801:2017 for airflow rating.
- In accordance with ISO 3741:2010 for sound data.



Model	HBF 250
Frequency [Hz]	50
Voltage [V]	220-240
Fan power [W]	57
RPM	1085
Fan current @ 230 V	0.25
Max. airflow [m³/h] (l/s)	482 (134)
SFP	0.43
Sound pressure level LpA @ 3 m	36
IP rating	IPX4

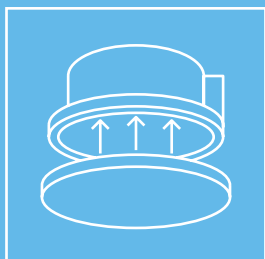






# PANELS

HBF fan decorative panels suit for any bathroom or kitchen ceiling design. Choose a panel from the range of round or square panels.



Easy mounting due to optimized design



High quality matt ABS plastic



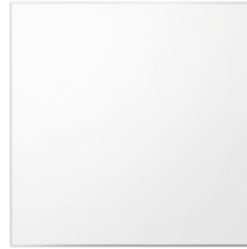
## ■ **MATT** PANEL



**RV HBF 250  
Round**  
flat round white matt  
panel



**RV HBF 250  
Round Black**  
flat round black matt  
panel



**RV HBF 250  
Square**  
flat square white matt  
panel



**RV HBF 250  
Square Black**  
flat square black matt  
panel



# ■ ACCESSORIES

Control unit



## VENTS BU-1-60

- Automatic control of residential fans
- Includes automatic control functions performed by a timer, humidity sensor, photo sensor, motion sensor
- Front panel equipped with light indicators. Display of control unit operation modes

Speed controller



## VENTS RS-1-0,5

- For switching fans on/off and for speed control of single-phase frequency controlled motors. For ventilation systems in various premises
- Input circuit protected with a thermal fuse
- Equipped with a transient filter

Clamp for flexible ducts



## VENTS C

- Made of stainless steel or galvanized steel
- Mounting of flexible air ducts

# ■ ACCESSORIES

Flexible air ducts



## POLYVENT

- Recommended for use in residential and industrial applications and ventilation, heating and air conditioning systems

Outer hood



## VENTS MVM 152 bVs N

- Decoration of ventilation shaft vents and connection to round air ducts
- Protection grille against birds and rodents
- Made of stainless steel
- Equipped with a rubber sealing ring

Outer hood



## VENTS MV 152 V ASA

- Decoration of ventilation shaft vents or for connection to rectangular or round air ducts
- Modification may include a gravity backdraft damper for back flow prevention
- Protection grille against birds and rodents
- Temperature- and UV-resistant antistatic plastic

Outer grille



## VENTS MV 150 V

- Decoration of ventilation shaft vents or for connection to round air ducts
- Temperature- and UV-resistant antistatic plastic
- Air pass regulation with a tilt wand or pull cords



The producer reserves the exclusive right to modify the construction, design and specifications as well as alter the components of its products at any time without prior notice.

[www.ventilation-system.com](http://www.ventilation-system.com)