

Series
VENTS
VUT/VUE 270 V5B EC



Heat recovery air handling units in sound- and heat-insulated casings.
Air flow up to 300 m³/h.
Heat recovery efficiency up to 98 %

Description

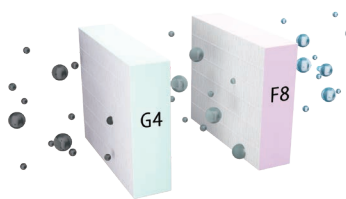
The air handling units are the fully featured ventilation units with heat recovery for air filtration, fresh air supply and stale air extract.

Casing

The casing is made of 15-26 mm thick expanded polypropylene (EPP), possessing high heat- and sound-insulating properties.

Filter

Supply and extract air flows are purified through G4 panel filters. For extra supply air filtration a F8 filter is available as a specially ordered accessory.



Fans

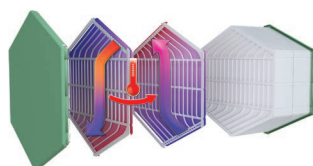
High-efficient electronically commutated motors with external motor and impeller with backward curved blades.

Designation key

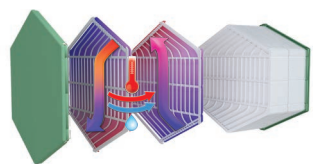
Series	Rated air flow [m ³ /h]	Installation type	Casing design	Bypass	Motor type	Control
VUT: ventilation with heat recovery VUE: ventilation with energy recovery	270	V: vertical	5: expanded polypropylene (EPP)	B: integrated bypass	EC: synchronous electronically commutated motor	A14 A21

Heat exchanger

The VUT 270 V5B EC units are equipped with a counter-flow polystyrene heat exchanger.



The VUE 270 V5B EC units are equipped with an enthalpy counter-flow heat exchanger.



Bypass

The **VUT/VUE 270 V5B EC** units are equipped with a bypass for summer ventilation (cooling of the premise with a cool outside air).

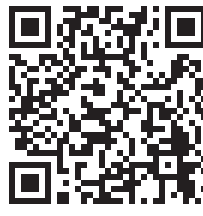
Automation

The **VUT/VUE 270 V5B EC A21** units are equipped with control system. The A21 controller allows integrating the unit into the Smart Home system or BMS (Building Management Systems).

The unit is controlled via Wi-Fi by means of the VENTS Home mobile application that must be downloaded.



Google play



Download on the App Store



The **VUT/VUE 270 V5B EC A14** units are equipped with integrated control system and wall-mounted sensor control panel A14 with LED indication.

Freeze protection

For **VUT/VUE 270 V5B EC A14** the freeze protection is realized by means of shutdown the supply fan.

For **VUT/VUE 270 V5B EC A21** the freeze protection is realized by means of turning the preheater (available as an accessory) on.

Installation

The units are designed for wall and floor mounting. The access for unit and filter maintenance is available on the right and left side.

Control and automation

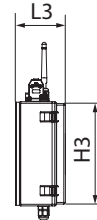
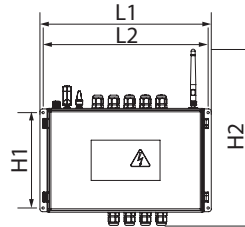
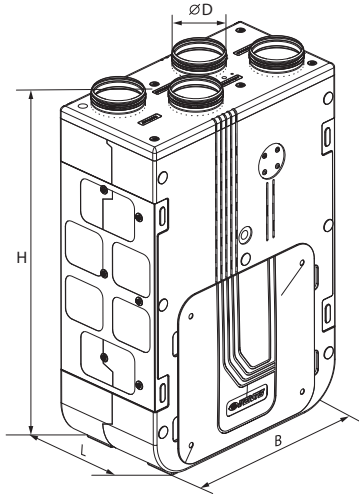
Functions	A21	A14
	option (A22)	A14
External wired control panel		
Wired remote LCD control panel	option (A25) 	-
External wireless control panel	option (A22 Wi-Fi) 	-
BMS	RS-485 WI-FI Ethernet MODBUS (RTU, TCP)	-
Service Vents Cloud Server	+	-
Wi-Fi control via mobile application	+	-
Speed selection	+	+
Filter replacement indication	according to filter timer	according to filter timer
	according to pressure switch of filter clogging	-
Alarm indication	full alarm description in the mobile application	alarm LED indication
Week scheduled operation	+	-
Bypass	auto	-
	manual	manual
Timer	+	-
Boost mode	+	-
Fireplace mode	+	-
Freeze protection	cyclic shut-down of supply fan	cyclic shut-down of supply fan
	preheating (option)	-
Reheater connection	option	-
Cooler connection	option	-
Control of minimum supply air temperature	+	-
Humidity control	option	option
CO ₂ control	option	option
VOC control	option	-
PM2.5 control	option	-
Fire detector	option	option

*Option. The function is available in case of mounting a respective accessory.

Overall dimensions

Model	Dimensions [mm]			
	Ø D	B	H	L
VUT/VUE 270 V5B EC	125	590	893	316

External automation unit (only units with A21 automation)	Dimensions [mm]					
	L1	L2	L3	H1	H2	H3
	324	313	93	180	330	196



Unit design

- Spigots
- Cable slots
- Extract fan with EC-motor
- Control unit
- G4 extract filter
- G4 supply filter
- Heat exchanger
- F8 supply filter (Option)
- Supply fan with EC-motor
- Drain pan
- Bypass



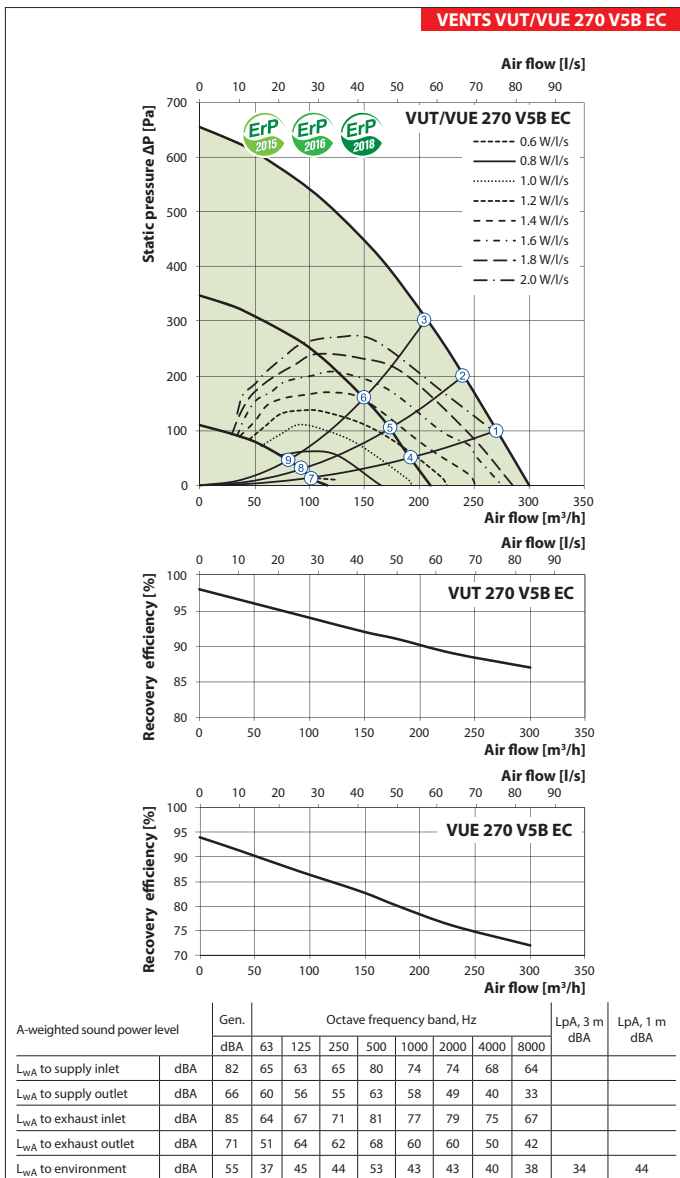
Accessories for air handling units

Model	G4 panel filter	F8 panel filter	LCD control panel	Control panel	Wi-Fi controllable control panel	Internal humidity sensor	CO ₂ sensor with indication	CO ₂ sensor	Humidity sensor	VOC sensor (0-10 V)	CO2 sensor (0-10 V)	Humidity sensor (0-10 V)	Reheater	Preheater	Syphon kit	Air damper	Electric actuator	
VUT 270 V5B EC A21																		
VUE 270 V5B EC A21	SF	SF	A25	A22	A22 Wi-Fi					DPWQ 30600	DPWQ 40200	DPWC 11200	NKD 125	NKP 125	SH-32	KRV 125	LF230	
VUT 270 V5B EC A14	G4	F8	-	-	-	HV2	CO2-1	CO2-2	HR-S	-	-	-	-	-	SH-32	-	-	
VUE 270 V5B EC A14			-	-	-													

AIR HANDLING UNITS WITH HEAT RECOVERY

Technical data

	VUT 270 V5B EC	VUE 270 V5B EC
Voltage 50 (60) Hz [V]		1~230
Maximum power [W]		162
Maximum current [A]		1.2
Maximum air flow [m³/h]		300
RPM [min⁻¹]		3200
Sound pressure level at 3 m distance [dBA]		34
Transported air temperature [°C]		-25...+40
Casing mater	expanded polypropylene (EPP)	
Insulation	EPP 15...26 mm	
Extract filter	G4	
Supply filter	G4 (optional F8)	
Connected air duct diameter [mm]	Ø125	
Weight [kg]	13	13.5
Recovery efficiency [%]	87 up to 98	72 up to 94
Heat exchanger type	counter-flow	
Heat exchanger material	polystyrene	enthalpy
SEC class for A14, A21	A+	A
SEC class for A2	B	B



Point	Power, W	Sound pressure level at 3 m (1 m) distance [dBA]
	VUT/VUE 270 V5B EC	VUT/VUE 270 V5B EC
1	153	34 (44)
2	150	34 (44)
3	142	33 (43)
4	62	30 (40)
5	60	29 (39)
6	59	28 (38)
7	17	27 (37)
8	17	23 (33)
9	16	23 (33)

Exhaust air spigot configuration	Air flow [l/s]	Specific fan power [W/l/s]	Recovery efficiency [%]
Kitchen + 1 additional wet room	21	0,73	85
Kitchen + 2 additional wet rooms	29	0,86	84
Kitchen + 3 additional wet rooms	37	1,08	82
Kitchen + 4 additional wet rooms	45	1.39	81

Calculation of air temperature at heat exchanger outlet:

$$t = t_{\text{outd}} + k_{\text{hr}} * (t_{\text{extr}} - t_{\text{outd}}) / 100,$$

where

t_{outd} is outdoor air temperature [°C]

t_{extr} is extract air temperature [°C]

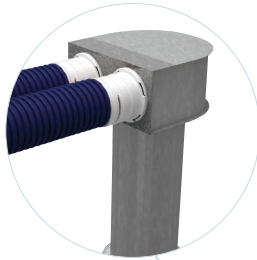
k_{hr} is heat exchanger efficiency (according to the diagram) [%]

Application options

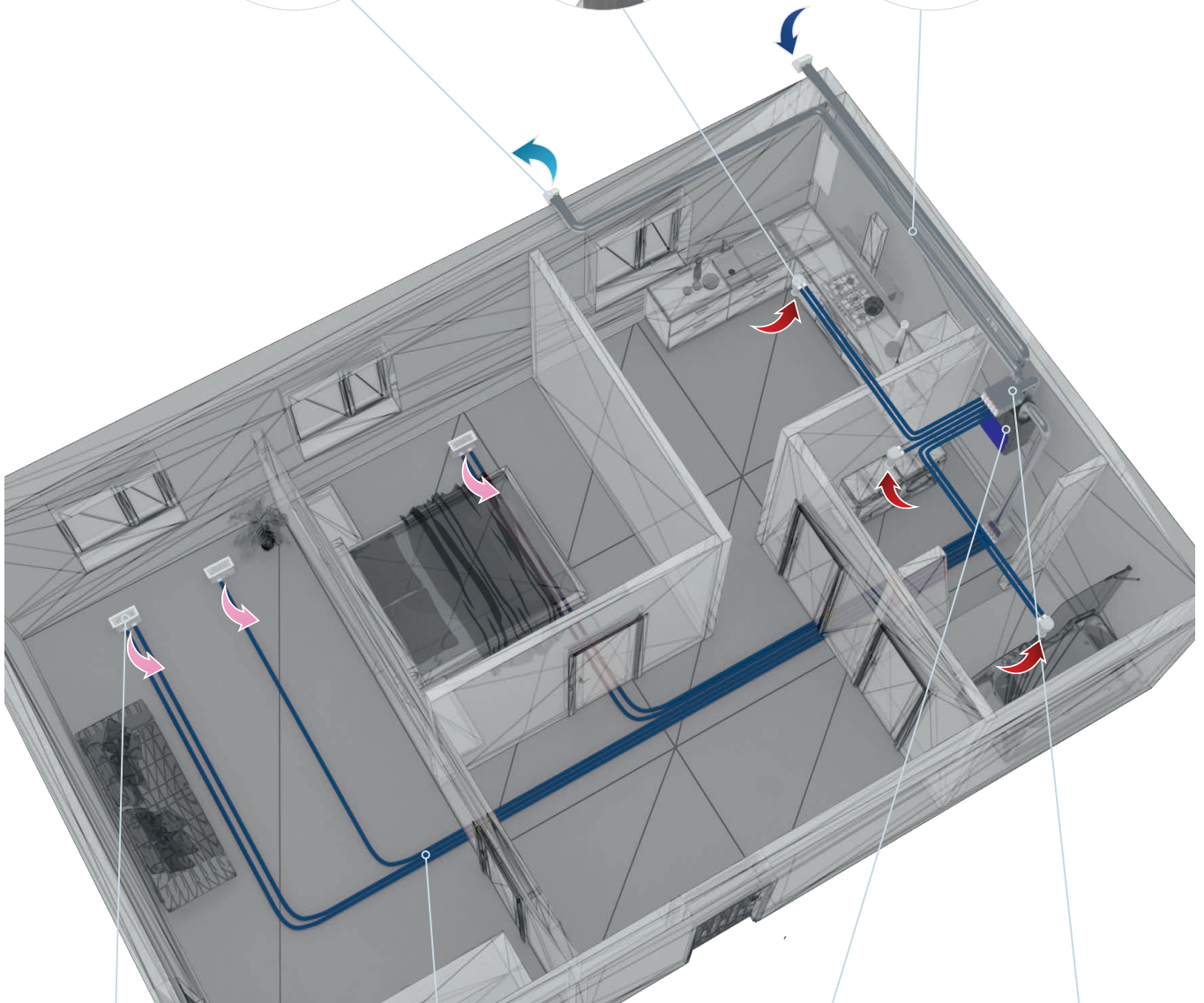
Ventilation hood



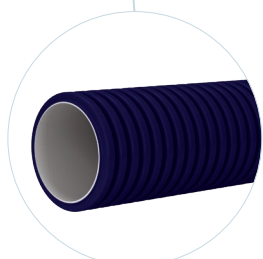
Ceiling connector with a disk valve



Isovent 150 insulated air duct



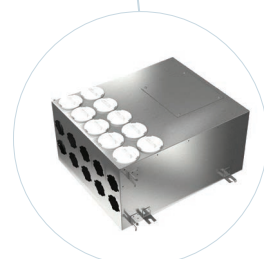
Floor connector with a grille



FlexiVent air duct



Air handling unit



Manifold